

**RECOMMENDED LAYOUT FOR -DV OPTIONS**

( $\phi .166[4.22]$  HOLES CENTERED ON QXE LAYOUT)

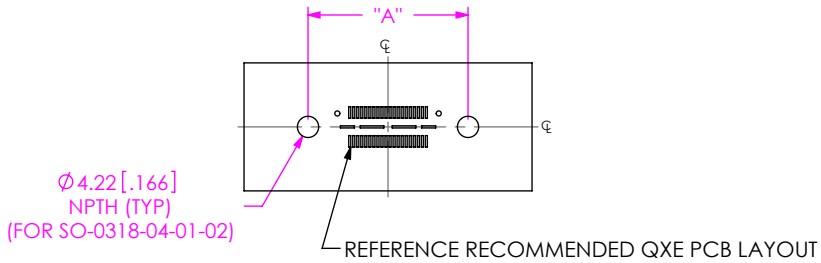
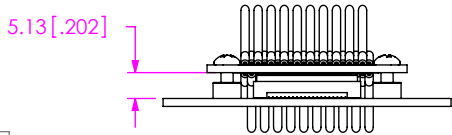
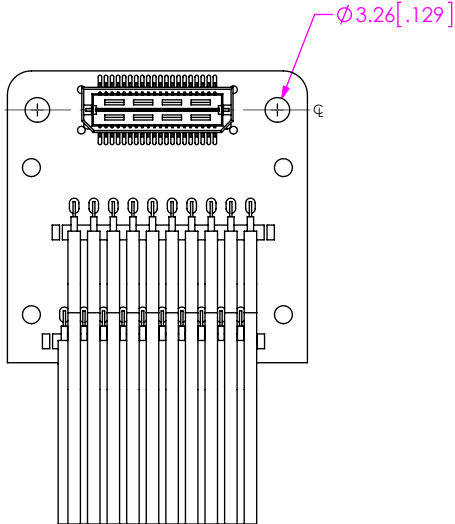


TABLE 1

EQRF	"A"	
No. OF POSITIONS		
-020	31.75	[1.250]
-040	51.75	[2.037]



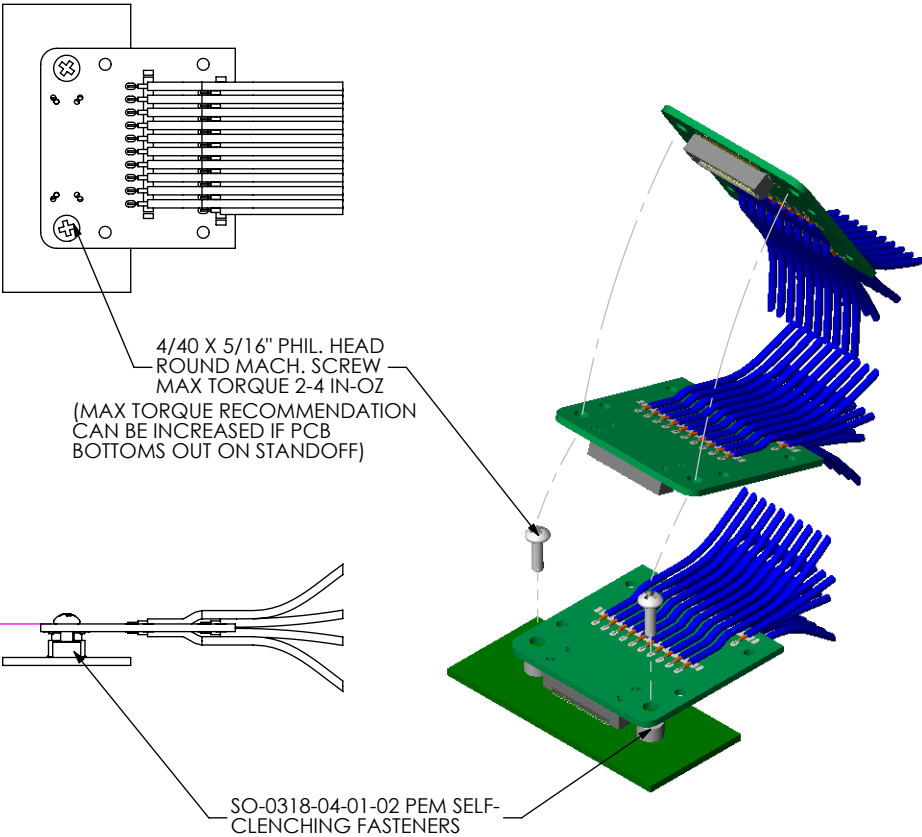
DO NOT  
SCALE FROM  
THIS PRINT



**XQRF-DV APPLICATION**

NOTE: ALL DIMENSIONS ARE FOR REFERENCE ONLY

**DESIGNED & DIMENSIONED  
IN MILLIMETERS[INCHES]**



**PROPRIETARY NOTE**

THIS DOCUMENT CONTAINS INFORMATION  
CONFIDENTIAL AND PROPRIETARY TO  
SAMTEC, INC. AND SHALL NOT BE REPRODUCED  
OR TRANSFERRED TO OTHER DOCUMENTS OR  
DISCLOSED TO OTHERS OR USED FOR ANY  
PURPOSE OTHER THAN THAT WHICH IT WAS  
OBTAINED WITHOUT THE EXPRESSED WRITTEN  
CONSENT OF SAMTEC, INC.

SHEET SCALE: 1:1.5

**samtec**

520 PARK EAST BLVD, NEW ALBANY, IN 47150  
PHONE: 812-944-6733 FAX: 812-948-5047  
e-Mail info@SAMTEC.com code 55322

DESCRIPTION:  
XQRF APPLICATIONS

DWG. NO.  
**XQRF APPLICATION VIEWS**

BY: D. FRALEY 04/18/2006 SHEET 1 OF 2

**RECOMMENDED LAYOUT FOR -EM OPTIONS**

NOTE: ALL DIMENSIONS ARE FOR REFERNECE ONLY

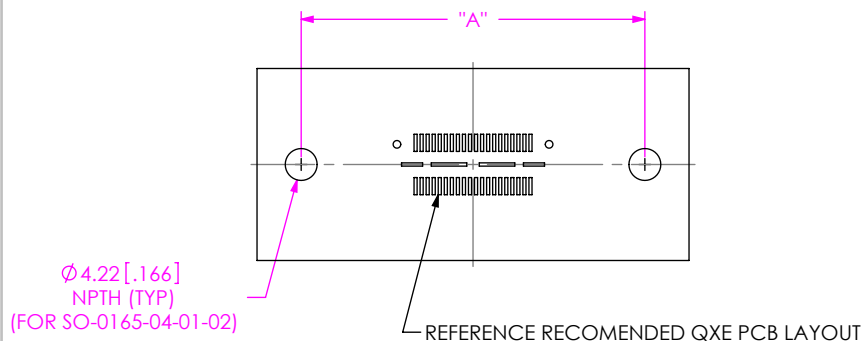
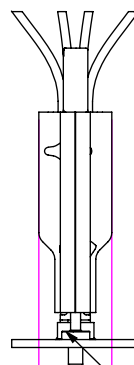
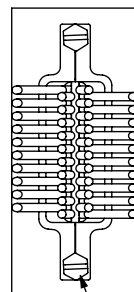
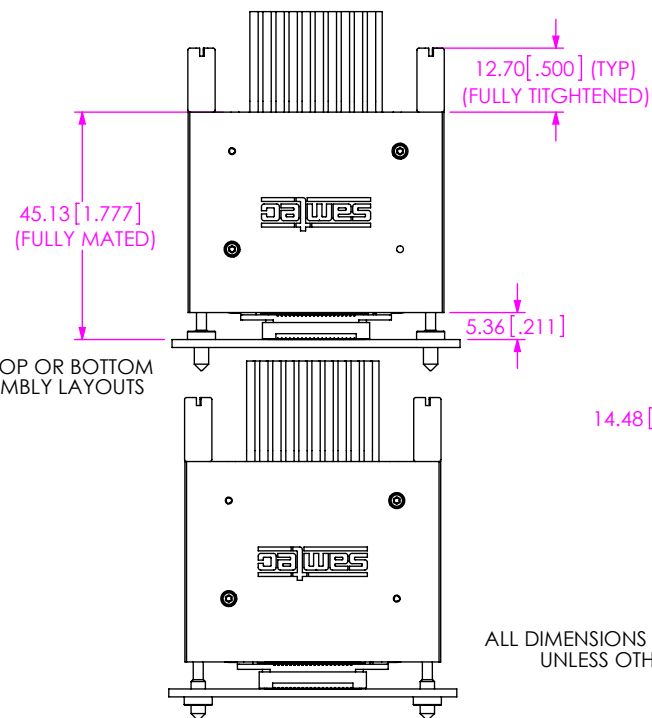
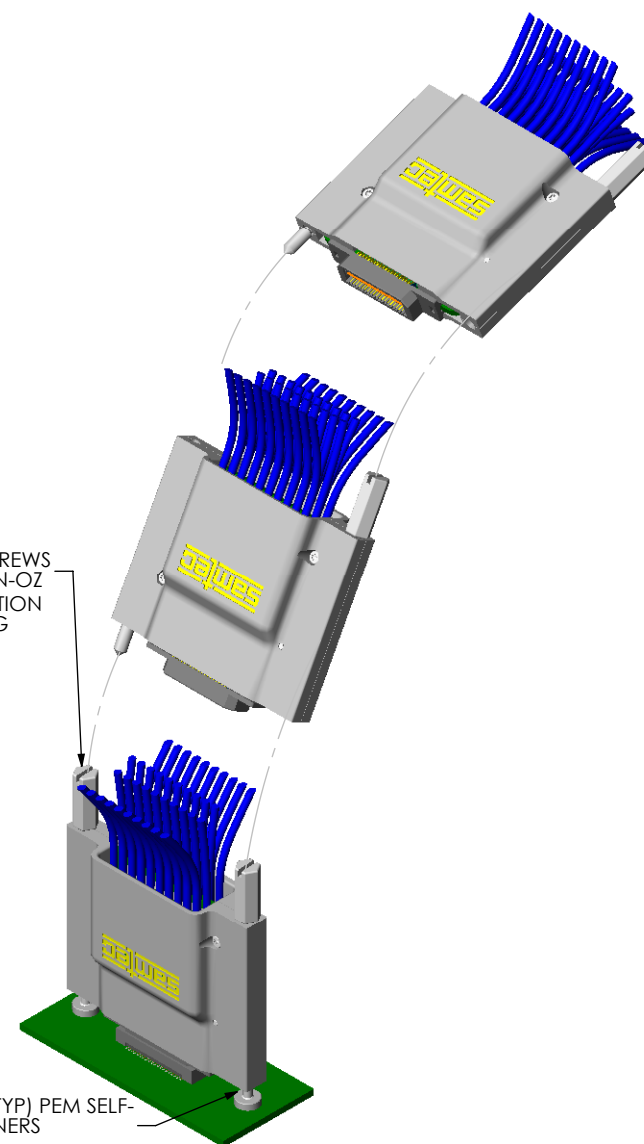


TABLE 2	
EQRF	"A"
No. OF POSITIONS	
-020	45.47 [1.790]
-040	71.37 [2.810]

**XQRF-EM APPLICATION**

NOTE: ALL DIMENSIONS ARE FOR REFERENCE ONLY

**DESIGNED & DIMENSIONED  
IN MILLIMETERS[INCHES]****PROPRIETARY NOTE**

THIS DOCUMENT CONTAINS INFORMATION CONFIDENTIAL AND PROPRIETARY TO SAMTEC, INC. AND SHALL NOT BE REPRODUCED OR TRANSFERRED TO OTHER DOCUMENTS OR DISCLOSED TO OTHERS OR USED FOR ANY PURPOSE OTHER THAN THAT WHICH IT WAS OBTAINED WITHOUT THE EXPRESSED WRITTEN CONSENT OF SAMTEC, INC.

SHEET SCALE: 1:1.5

**samtec**

520 PARK EAST BLVD, NEW ALBANY, IN 47150  
PHONE: 812-944-6733 FAX: 812-948-5047  
e-Mail info@SAMTEC.com code 55322

DESCRIPTION:

XQRF APPLICATIONS

DWG. NO.

**XQRF APPLICATION VIEWS**

BY: D. FRALEY 04/18/2006 SHEET 2 OF 2