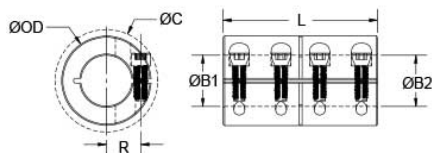




MCLX-12-8-SS

Ruland MCLX-12-8-SS, 12mm x 8mm Rigid Coupling, 303 Stainless Steel, One-Piece Clamp Style, 29mm OD, 45mm Length



Description

Ruland MCLX-12-8-SS is a one-piece rigid coupling with 12mm x 8mm bores, 29mm OD, and 45mm length. Proprietary Nypatch® anti-vibration coating on hardware allows for even seating of the screw, repeated screw installations, prevents galling, and maintains high holding power. It eliminates the need to treat screws upon receipt greatly reducing installation time. Forged screws test beyond DIN 912 12.9 standards to ensure maximum holding power. Tightly controlled bore tolerance of +.050mm/+.012mm is maintained. MCLX-12-8-SS is made from 303 stainless steel with hardware of like material for consistent corrosion resistance. It is machined from solid bar stock that is sourced exclusively from North American mills and is RoHS3 and REACH compliant. MCLX-12-8-SS is manufactured in our Marlborough, MA factory under strict controls using proprietary processes.

Product Specifications

Bore (B1)	12 mm	Small Bore (B2)	8 mm
B1 Max Shaft Penetration	22.5 mm	B2 Max Shaft Penetration	22.5 mm
Outer Diameter (OD)	29 mm	Bore Tolerance	+0.050 mm / +0.012 mm
Length (L)	45 mm	Recommended Shaft Tolerance	+0.000 mm / -0.013 mm
Forged Clamp Screw	M4	Screw Material	18-8 300 Series Stainless Steel with Nypatch®
Hex Wrench Size	3.0 mm	Screw Finish	Bright
Seating Torque	2.5 Nm	Number of Screws	4 ea
Rated Torque	32 Nm	Moment of Inertia	2.258 x 10 ⁻⁵ kg-m ²
Maximum Speed	4,000 RPM	Full Bearing Support Required?	No
Nypatch® Anti-Vibration Hardware?	Yes	Zero-Backlash?	Yes
Material Specification	Type 303 Austenitic, Non-Magnetic Bar	Temperature	-40°F to 350°F (-40°C to 176°C)
Finish Specification	Bright, No Plating	Manufacturer	Ruland Manufacturing
Country of Origin	USA	Weight (lbs)	0.425600
UPC	634529241554	Tariff Code	8483.60.8000
UNSPC	31163009		
Note 1	Performance ratings are for guidance only. The user must determine suitability for a particular application.		
Prop 65	⚠️ WARNING This product can expose you to the chemical Nickel (metallic), known to the State of California to cause cancer. For more information go to www.P65Warnings.ca.gov .		

Installation Instructions

1. Align the MCLX-12-8-SS one-piece rigid coupling on the two shafts to be connected. There should be no misalignment.
2. Tighten the Nypatch® screws in two stages, starting with the inside screws. Using a 3.0 mm torque wrench, tighten the inside screws to 1.25 Nm which is half the recommended seating torque. Repeat for the outside screws, again tightening to half of the recommended seating torque.
3. Tighten the screws to the full recommended seating torque of 2.5 Nm following the same pattern, starting with the inside screws first.