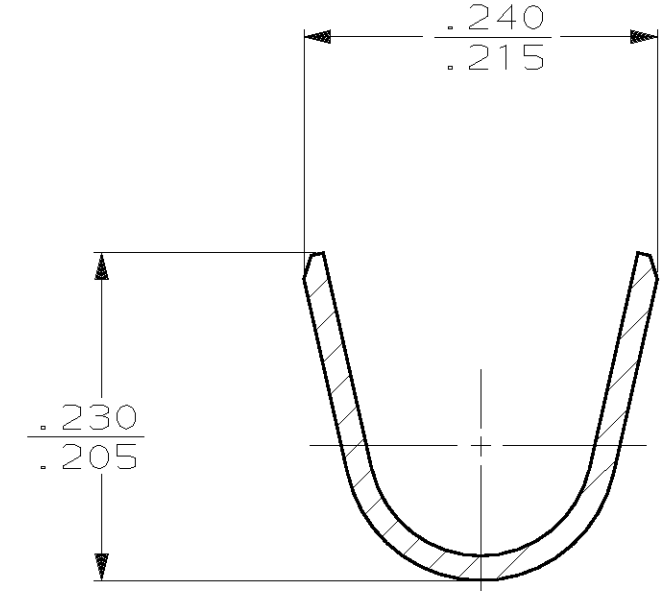
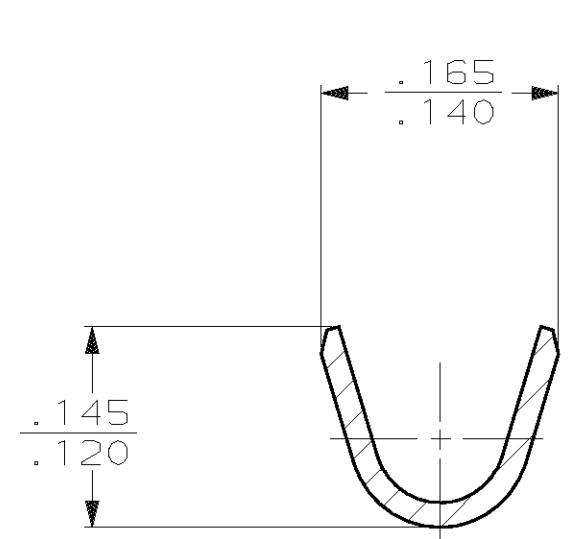
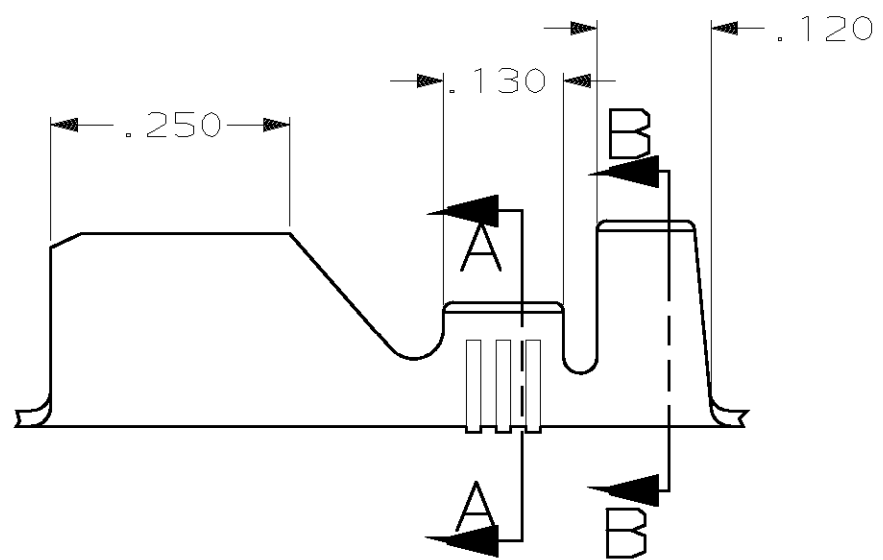
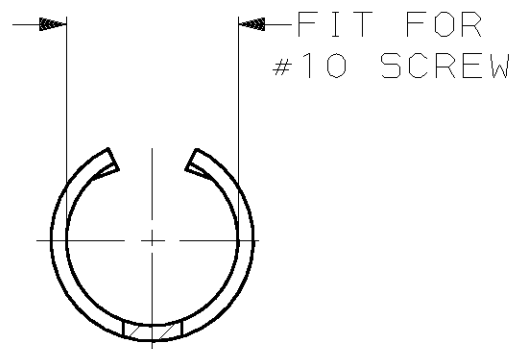
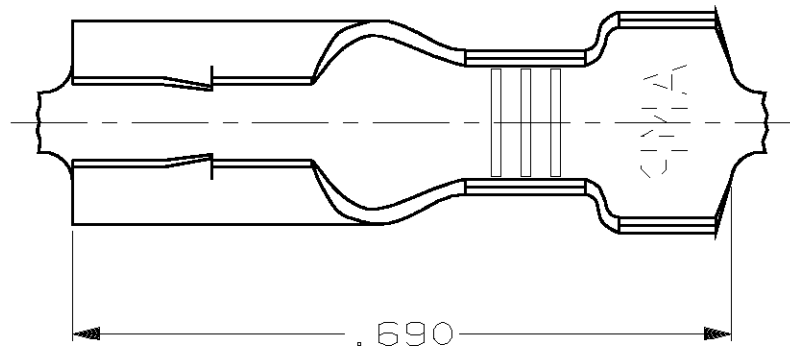


THIS DRAWING IS UNPUBLISHED. RELEASED FOR PUBLICATION, 19 .
 © COPYRIGHT 19 BY AMP INCORPORATED. ALL INTERNATIONAL RIGHTS RESERVED.

| | | | | | | | | |
|-----|------|---|---|------|-----|----------------------|---------|-------|
| LOC | DIST | P | F | ZONE | LTR | DESCRIPTION | DATE | APPD |
| AF | 50 | | | | F | REV PER 0G3A-0402-01 | 22JUN01 | JR/DD |

1 CONTINUOUS STRIP ON REELS



SECTION A-A
SCALE 8:1

SECTION B-B
SCALE 8:1

| | | | | | | | |
|--------------------|-------|--------------------|-------------------|-----------|--------------|---|---|
| | | .130-.175 DIA | | 18-14 AWG | | 42308-1 | |
| | | INSULATION RANGE | | WIRE SIZE | | PART NO | |
| 0 | .180 | .200 | F | .120 | .067 | 14 | DO NOT SCALE PRINT. UNLESS SPECIFIED DIMENSIONS IN mm [INCHES] TOLERANCES ON: 2 PLC DEC ± - 3 PLC DEC ± .015 ANGLES ± - |
| | | | | | .059 | 16 | |
| | | | | | .053 | 18 | |
| TYPE | WIDTH | STRIP LENGTH ±.015 | TYPE | WIDTH | ±.002 HEIGHT | WIRE | MATERIAL |
| INSUL BARREL CRIMP | | | WIRE BARREL CRIMP | | | | #4 HARD BRASS |
| | | | | | | FINISH | |
| | | | | | | DR 3/14/90 P FORTNEY | |
| | | | | | | CHK 3/14/90 JR RUTH | |
| | | | | | | APPD 3/14/90 G YETTER | |
| | | | | | | APPD 3/14/90 R KUZO | |
| | | | | | | PRODUCT SPEC | |
| | | | | | | APPLICATION SPEC | |
| | | | | | | WEIGHT - | |
| | | | | | | NAME | |
| | | | | | | AMP INCORPORATED Harrisburg, Pa. 17105 | |
| | | | | | | PIN RECEPTACLE FOR #10 SCREW | |
| | | | | | | SIZE B | |
| | | | | | | CAGE CODE 00779 | |
| | | | | | | DRAWING NO 42308 | |
| | | | | | | SCALE 6:1 | |
| | | | | | | SHEET 1 OF 1 | |