

4525-SS5A030GP

✓ ACTIVE

MEAS | MEAS MS4525

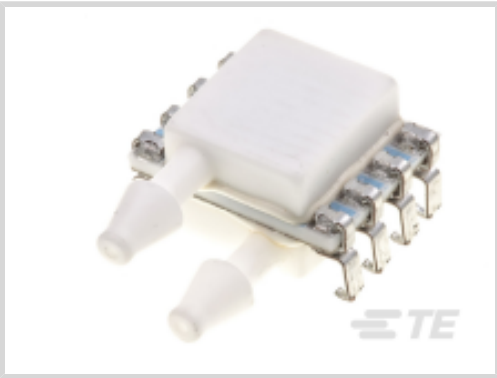
TE Internal #: 4525-SS5A030GP

Analog Pressure Sensor Modules, Gauge, 30 psi [2.068 bar], 10 - 90% Vdc, ±0.25% Span Pressure Accuracy, Supply Voltage Range 5 V, MEAS MS4525

[View on TE.com >](#)



Sensors > Pressure Sensors > Board Mount Pressure Sensors > PCB MOUNTED ANALOG PRESSURE SENSOR



Pressure Sensor Type: **Analog Pressure Sensor Modules**

Pressure Type: **Gauge**

Proof Pressure Range: **300 psi**

Pressure: **2.068 bar [ 30 psi ]**

Output Signal Type: **10 - 90% Vdc**

Features

Product Type Features

Sensor Package	8 pin DIL
Leg Style	Through Hole
Pressure Sensor Type	Analog Pressure Sensor Modules
Pressure Type	Gauge

Electrical Characteristics

Supply Voltage Range	5 V
----------------------	-----

Dimensions

Product Width	17.4 mm[.685 in]
Product Length	12.7 mm[.5 in]
Product Height	11.7 mm[.46 in]

Usage Conditions

Pressure	2.068 bar[30 psi]
Operating Temperature Range	-25 - 105 °C[-13 - 221 °F]

Operation/Application

Proof Pressure Range	300 psi
Output Signal Type	10 - 90% Vdc
Pressure Accuracy	±0.25% Span



Packaging Features

Sensor Port Configuration	Single Sideport
---------------------------	-----------------

Other

Sensor Options	No Option
----------------	-----------

Product Compliance

For compliance documentation, visit the product page on TE.com>

EU RoHS Directive 2011/65/EU	Compliant
EU ELV Directive 2000/53/EC	Compliant
China RoHS 2 Directive MIIT Order No 32, 2016	No Restricted Materials Above Threshold
EU REACH Regulation (EC) No. 1907/2006	Current ECHA Candidate List: JAN 2024 (240) Candidate List Declared Against: JAN 2024 (240) Does not contain REACH SVHC
Halogen Content	Not Yet Reviewed for halogen content
Solder Process Capability	Not reviewed for solder process capability

Product Compliance Disclaimer

This information is provided based on reasonable inquiry of our suppliers and represents our current actual knowledge based on the information they provided. This information is subject to change. The part numbers that TE has identified as EU RoHS compliant have a maximum concentration of 0.1% by weight in homogenous materials for lead, hexavalent chromium, mercury, PBB, PBDE, DBP, BBP, DEHP, DIBP, and 0.01% for cadmium, or qualify for an exemption to these limits as defined in the Annexes of Directive 2011/65/EU (RoHS2). Finished electrical and electronic equipment products will be CE marked as required by Directive 2011/65/EU. Components may not be CE marked. Additionally, the part numbers that TE has identified as EU ELV compliant have a maximum concentration of 0.1% by weight in homogenous materials for lead, hexavalent chromium, and mercury, and 0.01% for cadmium, or qualify for an exemption to these limits as defined in the Annexes of Directive 2000/53/EC (ELV). Regarding the REACH Regulation, the information TE provides on SVHC in articles for this part number is based on the latest European Chemicals Agency (ECHA) 'Guidance on requirements for substances in articles' posted at this URL: <https://echa.europa.eu/guidance-documents/guidance-on-reach>

Compatible Parts



TE Part # CAT-BLPS0041  
PCB MOUNTED ANALOG PRESSURE SENSOR




TE Part # 4525DO-DS3AI002DP  
PRESS XDCR,DIGITAL,PSI RANGE


Also in the Series | MEAS MS4525




Customers Also Bought




TE Part # 6609046-4  
Single Phase Filters, Corcom T Series




TE Part # G-MRCO-052  
AMR Position Sensors




TE Part # 6609021-9  
10VB1=F7128 S0




TE Part # 1-1825027-1  
FSMRA4JH04=R/A, TACT PB SW, 160G



TE Part # 2-1761608-1  
IDC LOW PRO HDR 6P VERT SHT LA



TE Part # 1924955-4  
CONTACT, FEMALE 0.64, 18AWG, UNSEALED



TE Part # 7-2176422-6  
TLRP 2512 3.0W R100 1% 50PPM 4K RL

Documents

- CAD Files

3D PDF

3D

Customer View Model

ENG\_CVM\_CVM\_4525-SS5A030GP\_C.2d\_dxf.zip

English

Customer View Model

ENG\_CVM\_CVM\_4525-SS5A030GP\_C.3d\_igs.zip

English

Customer View Model

ENG\_CVM\_CVM\_4525-SS5A030GP\_C.3d\_stp.zip

English

By downloading the CAD file I accept and agree to the [Terms and Conditions](#) of use.

- Datasheets & Catalog Pages

Data sheet

English

