

# PP-H 2,5/1-L - Plug



3210062

<https://www.phoenixcontact.com/us/products/3210062>

Please be informed that the data shown in this PDF document is generated from our online catalog. Please find the complete data in the user documentation. Our general terms of use for downloads are valid.



Plug, nom. voltage: 500 V, nominal current: 24 A, number of connections: 1, number of positions: 1, connection method: Push-in connection, 1 level, Rated cross section: 2.5 mm<sup>2</sup>, cross section: 0.14 mm<sup>2</sup> - 4 mm<sup>2</sup>, color: gray

## Product description

Connector element left, left housing without engagement pin, right opened without cover

## Your advantages

- Large-surface labeling option
- The Push-in technology COMBI plugs for self-assembly provide solutions that users can implement themselves
- Tested for railway applications

## Commercial data

Item number	3210062
Packing unit	50 pc
Minimum order quantity	50 pc
Sales key	BE22
Product key	BE2244
Catalog page	Page 299 (C-1-2019)
GTIN	4046356333474
Weight per piece (including packing)	3.425 g
Weight per piece (excluding packing)	3.3 g
Customs tariff number	85366990
Country of origin	PL

## Technical data

### Product properties

Product type	Terminal plug
Area of application	Railway industry
	Machine building
	Plant engineering
Number of positions	1
Pitch	5.2 mm
Number of connections	1
Number of rows	1
Potentials	1

### Insulation characteristics

Overvoltage category	III
Degree of pollution	3

### Electrical properties

Rated surge voltage	6 kV
Maximum power dissipation for nominal condition	0.77 W

### Connection data

Number of connections per level	1
Nominal cross section	2.5 mm <sup>2</sup>

#### 1 level

Stripping length	8 mm ... 10 mm
Internal cylindrical gage	A3
Connection in acc. with standard	IEC 61984
Conductor cross section rigid	0.14 mm <sup>2</sup> ... 4 mm <sup>2</sup>
Cross section AWG	26 ... 12 (converted acc. to IEC)
Conductor cross section flexible	0.14 mm <sup>2</sup> ... 2.5 mm <sup>2</sup>
Conductor cross section, flexible [AWG]	26 ... 14 (converted acc. to IEC)
Conductor cross-section flexible (ferrule without plastic sleeve)	0.14 mm <sup>2</sup> ... 2.5 mm <sup>2</sup>
Flexible conductor cross section (ferrule with plastic sleeve)	0.14 mm <sup>2</sup> ... 2.5 mm <sup>2</sup>
2 conductors with the same cross section, flexible, with TWIN ferrule with plastic sleeve	0.5 mm <sup>2</sup>
Nominal current	24 A
Maximum load current	24 A (with 4 mm <sup>2</sup> conductor cross section)
Nominal voltage	500 V
Nominal cross section	2.5 mm <sup>2</sup>

#### 1 level Connection cross sections directly pluggable

Conductor cross section rigid	0.34 mm <sup>2</sup> ... 4 mm <sup>2</sup>
Conductor cross-section flexible (ferrule without plastic sleeve)	0.34 mm <sup>2</sup> ... 2.5 mm <sup>2</sup>

# PP-H 2,5/1-L - Plug



3210062

<https://www.phoenixcontact.com/us/products/3210062>

Flexible conductor cross section (ferrule with plastic sleeve)	0.34 mm <sup>2</sup> ... 2.5 mm <sup>2</sup>
--	--

## Dimensions

Width	5.2 mm
Height	15.8 mm
Depth	40.2 mm
Pitch	5.2 mm

## Material specifications

Color	gray
Flammability rating according to UL 94	V0
Insulating material group	I
Insulating material	PA
Static insulating material application in cold	-60 °C
Temperature index of insulation material (DIN EN 60216-1 (VDE 0304-21))	130 °C
Relative insulation material temperature index (Elec., UL 746 B)	130 °C
Fire protection for rail vehicles (DIN EN 45545-2) R22	HL 1 - HL 3
Fire protection for rail vehicles (DIN EN 45545-2) R23	HL 1 - HL 3
Fire protection for rail vehicles (DIN EN 45545-2) R24	HL 1 - HL 3
Fire protection for rail vehicles (DIN EN 45545-2) R26	HL 1 - HL 3
Calorimetric heat release NFPA 130 (ASTM E 1354)	28 MJ/kg
Surface flammability NFPA 130 (ASTM E 162)	passed
Specific optical density of smoke NFPA 130 (ASTM E 662)	passed
Smoke gas toxicity NFPA 130 (SMP 800C)	passed

## Mechanical properties

### Mechanical data

Open side panel	No
-----------------	----

## Environmental and real-life conditions

### Ambient conditions

Ambient temperature (operation)	-60 °C (max. operating temperature see derating curve)
Ambient temperature (storage/transport)	-25 °C ... 60 °C (for a short time, no longer than 24 h, -60°C to +70°C)
Ambient temperature (assembly)	-5 °C ... 70 °C
Ambient temperature (actuation)	-5 °C ... 70 °C
Permissible humidity (operation)	20 % ... 90 %
Permissible humidity (storage/transport)	30 % ... 70 %

## Standards and regulations

Connection in acc. with standard	IEC 61984
----------------------------------	-----------

## Mounting

# PP-H 2,5/1-L - Plug

3210062

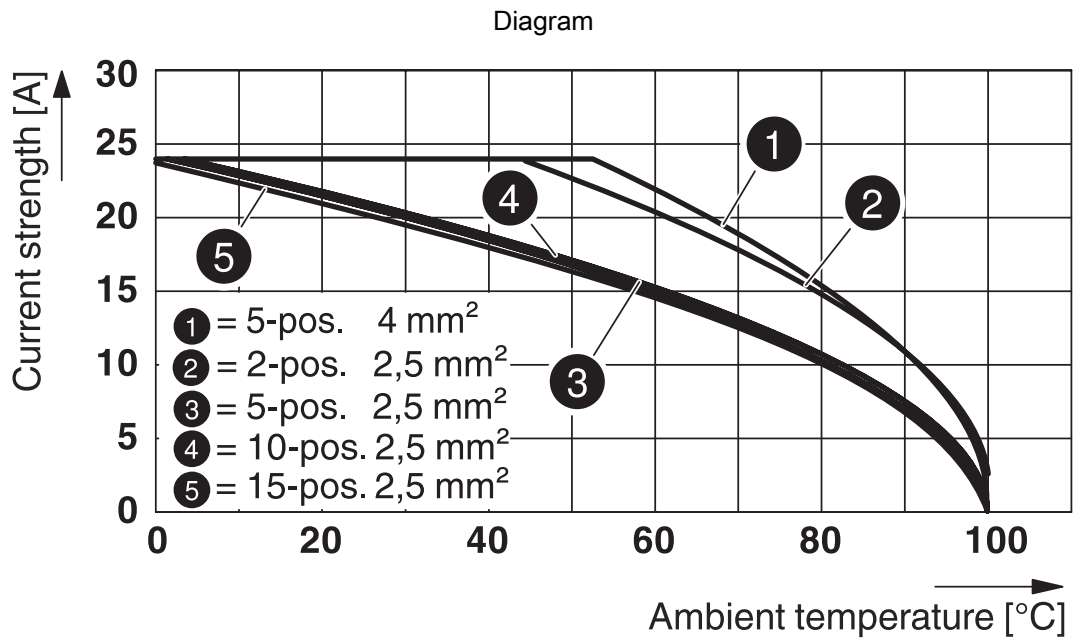
<https://www.phoenixcontact.com/us/products/3210062>



## Assembly note

Use of a parallel pressing tool is recommended for easy latching of the COMBI connector and coupling elements for self-assembly

## Drawings



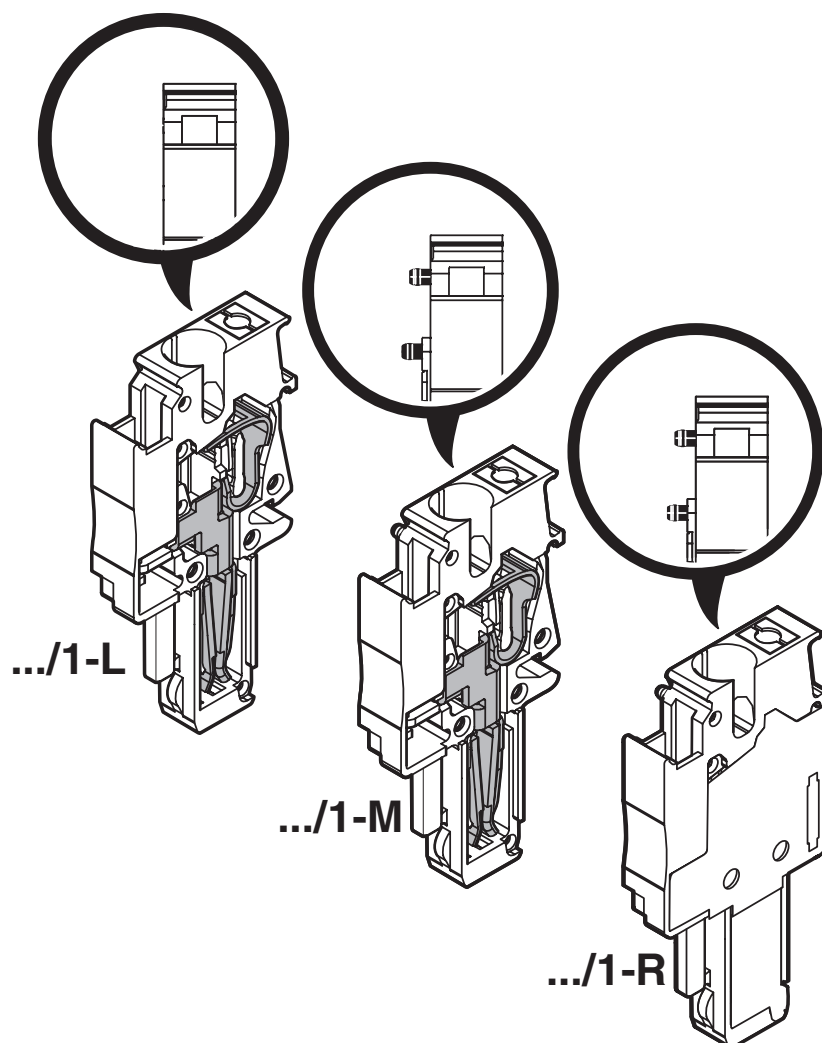
# PP-H 2,5/1-L - Plug

3210062

<https://www.phoenixcontact.com/us/products/3210062>



Schematic diagram



# PP-H 2,5/1-L - Plug

3210062

<https://www.phoenixcontact.com/us/products/3210062>



Circuit diagram



# PP-H 2,5/1-L - Plug



3210062

<https://www.phoenixcontact.com/us/products/3210062>

## Approvals

To download certificates, visit the product detail page: <https://www.phoenixcontact.com/us/products/3210062>

**DNV**

Approval ID: TAE00003JE



**CSA**

Approval ID: 2030668

	Nominal voltage $U_N$	Nominal current $I_N$	Cross section AWG	Cross section $mm^2$
Use group B				
	300 V	20 A	26 - 12	-
Use group C				
	300 V	20 A	26 - 12	-



**EAC**

Approval ID: RU C-DE.BL08.B.00511



**cULus Recognized**

Approval ID: E60425



**LR**

Approval ID: LR2371832TA



**NK**

Approval ID: 14ME0912



**BV**

Approval ID: 25278/C1 BV

**ABS**

Approval ID: 21-2192245-PDA



**LR**

Approval ID: 14/20056



**cULus Recognized**

Approval ID: E60425



# PP-H 2,5/1-L - Plug

3210062

<https://www.phoenixcontact.com/us/products/3210062>



# PP-H 2,5/1-L - Plug



3210062

<https://www.phoenixcontact.com/us/products/3210062>

## Classifications

### ECLASS

ECLASS-11.0	27141151
ECLASS-12.0	27141151
ECLASS-13.0	27250306

### ETIM

ETIM 9.0	EC002021
----------	----------

### UNSPSC

UNSPSC 21.0	39121400
-------------	----------

# PP-H 2,5/1-L - Plug

3210062

<https://www.phoenixcontact.com/us/products/3210062>



## Environmental product compliance

### EU RoHS

Fulfills EU RoHS substance requirements	Yes, No exemptions
---	--------------------

### China RoHS

Environment friendly use period (EFUP)	EFUP-E
	No hazardous substances above the limits

### EU REACH SVHC

REACH candidate substance (CAS No.)	No substance above 0.1 wt%
-------------------------------------	----------------------------

# PP-H 2,5/1-L - Plug

3210062

<https://www.phoenixcontact.com/us/products/3210062>



## Accessories

### PZ/2 - Strain relief

3040627

<https://www.phoenixcontact.com/us/products/3040627>



Strain relief, width: 9.3 mm, height: 48.7 mm, number of positions: 2, color: black

---

### PZ/4 - Strain relief

3040643

<https://www.phoenixcontact.com/us/products/3040643>



Strain relief, width: 19.6 mm, height: 48.7 mm, number of positions: 4, color: black

## PP-H 2,5/1-L - Plug

3210062

<https://www.phoenixcontact.com/us/products/3210062>



## PR - Latching

3040559

<https://www.phoenixcontact.com/us/products/3040559>



Latching, width: 4.4 mm, height: 29.8 mm, number of positions: 1, color: orange

---

## PR/2 - Latching

3040630

<https://www.phoenixcontact.com/us/products/3040630>



Latching, width: 10 mm, height: 29.8 mm, number of positions: 2, color: orange

# PP-H 2,5/1-L - Plug

3210062

<https://www.phoenixcontact.com/us/products/3210062>



## PRT/2 - Latching

3040631

<https://www.phoenixcontact.com/us/products/3040631>



Latching, can only be released using a screwdriver, width: 9 mm, height: 23.2 mm, number of positions: 2, color: orange

---

## PRZ - Latching

3040614

<https://www.phoenixcontact.com/us/products/3040614>



Latching, number of positions: 2, length: 64 mm, color: orange

# PP-H 2,5/1-L - Plug

3210062

<https://www.phoenixcontact.com/us/products/3210062>



## PSH 3- 6 - Shield connection clamp

3040591

<https://www.phoenixcontact.com/us/products/3040591>



Shield connection clamp, nom. voltage: 300 V, color: black

---

## PSH 5-10 - Shield connection clamp

3040601

<https://www.phoenixcontact.com/us/products/3040601>



Shield connection clamp, nom. voltage: 300 V, color: black

## PP-H 2,5/1-L - Plug

3210062

<https://www.phoenixcontact.com/us/products/3210062>



## DF-SP-H 2,5 - Flange cover

3209824

<https://www.phoenixcontact.com/us/products/3209824>



Flange cover, connection method: Screw connection, depth: 24.7 mm, width: 4.5 mm, height: 35.8 mm, color: gray

---

## PH 2,5/ 2 - Cable housing

3209691

<https://www.phoenixcontact.com/us/products/3209691>



Cable housing, pitch: 10.4 mm, depth: 36.8 mm, width: 10.4 mm, height: 19.9 mm, number of positions: 2, color: gray



# PP-H 2,5/1-L - Plug

3210062

<https://www.phoenixcontact.com/us/products/3210062>



## PH 2,5/ 3 - Cable housing

3209701

<https://www.phoenixcontact.com/us/products/3209701>



Cable housing, pitch: 15.6 mm, depth: 36.8 mm, width: 15.6 mm, height: 19.9 mm, number of positions: 3, color: gray

---

## PH 2,5/ 4 - Cable housing

3209714

<https://www.phoenixcontact.com/us/products/3209714>



Cable housing, pitch: 20.8 mm, depth: 36.8 mm, width: 20.8 mm, height: 19.9 mm, number of positions: 4, color: gray

# PP-H 2,5/1-L - Plug

3210062

<https://www.phoenixcontact.com/us/products/3210062>



## PH 2,5/ 5 - Cable housing

3209727

<https://www.phoenixcontact.com/us/products/3209727>



Cable housing, pitch: 26 mm, depth: 36.8 mm, width: 26 mm, height: 19.9 mm, number of positions: 5, color: gray

---

## PH 2,5/ 6 - Cable housing

3209730

<https://www.phoenixcontact.com/us/products/3209730>



Cable housing, pitch: 31.2 mm, depth: 36.8 mm, width: 31.2 mm, height: 19.9 mm, number of positions: 6, color: gray

# PP-H 2,5/1-L - Plug

3210062

<https://www.phoenixcontact.com/us/products/3210062>



## PH 2,5/ 7 - Cable housing

3209743

<https://www.phoenixcontact.com/us/products/3209743>



Cable housing, pitch: 36.4 mm, depth: 36.8 mm, width: 36.4 mm, height: 19.9 mm, number of positions: 7, color: gray

---

## PH 2,5/ 8 - Cable housing

3209756

<https://www.phoenixcontact.com/us/products/3209756>



Cable housing, pitch: 41.6 mm, depth: 36.8 mm, width: 41.6 mm, height: 19.9 mm, number of positions: 8, color: gray

# PP-H 2,5/1-L - Plug

3210062

<https://www.phoenixcontact.com/us/products/3210062>



## PH 2,5/ 9 - Cable housing

3209507

<https://www.phoenixcontact.com/us/products/3209507>



Cable housing, pitch: 46.8 mm, depth: 36.8 mm, width: 46.8 mm, height: 19.9 mm, number of positions: 9, color: gray

---

## PH 2,5/10 - Cable housing

3209769

<https://www.phoenixcontact.com/us/products/3209769>



Cable housing, pitch: 52 mm, depth: 36.8 mm, width: 52 mm, height: 19.9 mm, number of positions: 10, color: gray

# PP-H 2,5/1-L - Plug

3210062

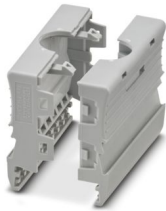
<https://www.phoenixcontact.com/us/products/3210062>



## PH 2,5/11 - Cable housing

3209772

<https://www.phoenixcontact.com/us/products/3209772>



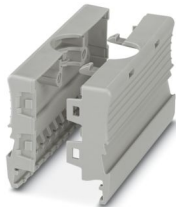
Cable housing, pitch: 57.2 mm, depth: 36.8 mm, width: 57.2 mm, height: 19.9 mm, number of positions: 11, color: gray

---

## PH 2,5/12 - Cable housing

3209785

<https://www.phoenixcontact.com/us/products/3209785>



Cable housing, pitch: 62.4 mm, depth: 36.8 mm, width: 62.4 mm, height: 19.9 mm, number of positions: 12, color: gray

# PP-H 2,5/1-L - Plug

3210062

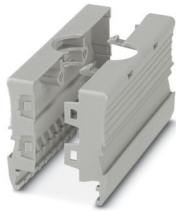
<https://www.phoenixcontact.com/us/products/3210062>



## PH 2,5/13 - Cable housing

3209798

<https://www.phoenixcontact.com/us/products/3209798>



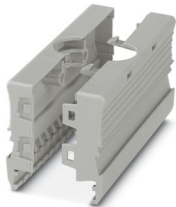
Cable housing, pitch: 67.6 mm, depth: 36.8 mm, width: 67.6 mm, height: 19.9 mm, number of positions: 13, color: gray

---

## PH 2,5/14 - Cable housing

3209808

<https://www.phoenixcontact.com/us/products/3209808>



Cable housing, pitch: 72.8 mm, depth: 36.8 mm, width: 72.8 mm, height: 19.9 mm, number of positions: 14, color: gray

## PP-H 2,5/1-L - Plug

3210062

<https://www.phoenixcontact.com/us/products/3210062>



## PH 2,5/15 - Cable housing

3209811

<https://www.phoenixcontact.com/us/products/3209811>



Cable housing, pitch: 78 mm, depth: 36.8 mm, width: 78 mm, height: 19.9 mm, number of positions: 15, color: gray

---

## PP-H 2,5/1-M - Plug

3210091

<https://www.phoenixcontact.com/us/products/3210091>



Plug, nom. voltage: 500 V, nominal current: 24 A, number of positions: 1, connection method: Push-in connection, 1 level, Rated cross section: 2.5 mm<sup>2</sup>, cross section: 0.14 mm<sup>2</sup>- 4 mm<sup>2</sup>, color: gray

## PP-H 2,5/1-L - Plug

3210062

<https://www.phoenixcontact.com/us/products/3210062>



## PP-H 2,5/1-M BU - Plug

3210101

<https://www.phoenixcontact.com/us/products/3210101>



Plug, nom. voltage: 500 V, nominal current: 24 A, number of connections: 1, number of positions: 1, connection method: Push-in connection, 1 level, Rated cross section: 2.5 mm<sup>2</sup>, cross section: 0.14 mm<sup>2</sup> - 4 mm<sup>2</sup>, color: blue

---

## PP-H 2,5/1-M GNYE - Plug

3210114

<https://www.phoenixcontact.com/us/products/3210114>



Plug, nom. voltage: 500 V, nominal current: 24 A, number of connections: 1, number of positions: 1, connection method: Push-in connection, 1 level, Rated cross section: 2.5 mm<sup>2</sup>, cross section: 0.14 mm<sup>2</sup> - 4 mm<sup>2</sup>, color: green-yellow



## PP-H 2,5/1-L - Plug

3210062

<https://www.phoenixcontact.com/us/products/3210062>



## PP-H 2,5/1-R - Plug

3210127

<https://www.phoenixcontact.com/us/products/3210127>



Plug, nom. voltage: 500 V, nominal current: 24 A, number of connections: 1, number of positions: 1, connection method: Push-in connection, 1 level, Rated cross section: 2.5 mm<sup>2</sup>, cross section: 0.14 mm<sup>2</sup> - 4 mm<sup>2</sup>, color: gray

---

## PP-H 2,5/1-R BU - Plug

3210130

<https://www.phoenixcontact.com/us/products/3210130>



Plug, nom. voltage: 500 V, nominal current: 24 A, number of connections: 1, number of positions: 1, connection method: Push-in connection, 1 level, Rated cross section: 2.5 mm<sup>2</sup>, cross section: 0.14 mm<sup>2</sup> - 4 mm<sup>2</sup>, color: blue

## PP-H 2,5/1-L - Plug

3210062

<https://www.phoenixcontact.com/us/products/3210062>



## PP-H 2,5/1-R GNYE - Plug

3210143

<https://www.phoenixcontact.com/us/products/3210143>



Plug, nom. voltage: 500 V, nominal current: 24 A, number of connections: 1, number of positions: 1, connection method: Push-in connection, 1 level, Rated cross section: 2.5 mm<sup>2</sup>, cross section: 0.14 mm<sup>2</sup> - 4 mm<sup>2</sup>, color: green-yellow

---

## MPS-MT - Test plug

0201744

<https://www.phoenixcontact.com/us/products/0201744>



Test plug, with solder connection up to 1 mm<sup>2</sup> conductor cross section, number of positions: 1, color: gray

# PP-H 2,5/1-L - Plug

3210062

<https://www.phoenixcontact.com/us/products/3210062>



## MPS-IH WH - Insulating sleeve

0201663

<https://www.phoenixcontact.com/us/products/0201663>

Insulating sleeve, color: white



---

## MPS-IH RD - Insulating sleeve

0201676

<https://www.phoenixcontact.com/us/products/0201676>

Insulating sleeve, color: red



# PP-H 2,5/1-L - Plug

3210062

<https://www.phoenixcontact.com/us/products/3210062>

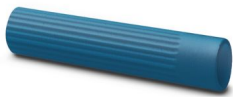


## MPS-IH BU - Insulating sleeve

0201689

<https://www.phoenixcontact.com/us/products/0201689>

Insulating sleeve, color: blue



---

## MPS-IH YE - Insulating sleeve

0201692

<https://www.phoenixcontact.com/us/products/0201692>

Insulating sleeve, color: yellow



# PP-H 2,5/1-L - Plug

3210062

<https://www.phoenixcontact.com/us/products/3210062>



## MPS-IH GN - Insulating sleeve

0201702

<https://www.phoenixcontact.com/us/products/0201702>

Insulating sleeve, color: green



---

## MPS-IH GY - Insulating sleeve

0201728

<https://www.phoenixcontact.com/us/products/0201728>

Insulating sleeve, color: gray



## PP-H 2,5/1-L - Plug

3210062

<https://www.phoenixcontact.com/us/products/3210062>



## MPS-IH BK - Insulating sleeve

0201731

<https://www.phoenixcontact.com/us/products/0201731>

Insulating sleeve, color: black



---

## ISH 2,5/0,2 - Insulating sleeve

3002843

<https://www.phoenixcontact.com/us/products/3002843>

Insulating sleeve, color: white



# PP-H 2,5/1-L - Plug

3210062

<https://www.phoenixcontact.com/us/products/3210062>



## ISH 2,5/0,5 - Insulating sleeve

3002856

<https://www.phoenixcontact.com/us/products/3002856>



Insulating sleeve, color: gray

---

## ISH 2,5/1,0 - Insulating sleeve

3002869

<https://www.phoenixcontact.com/us/products/3002869>



Insulating sleeve, color: black

# PP-H 2,5/1-L - Plug

3210062

<https://www.phoenixcontact.com/us/products/3210062>



## ZBF 5:UNBEDRUCKT - Zack Marker strip, flat

0808642

<https://www.phoenixcontact.com/us/products/0808642>



Zack Marker strip, flat, Strip, white, unlabeled, can be labeled with: PLOTMARK, CMS-P1-PLOTTER, mounting type: snapped, for terminal block width: 5 mm, lettering field size: 5.1 x 5.2 mm, Number of individual labels: 10

---

## ZBF 5 CUS - Zack Marker strip, flat

0825025

<https://www.phoenixcontact.com/us/products/0825025>



Zack Marker strip, flat, can be ordered: Strip, white, labeled according to customer specifications, mounting type: snap into flat marker groove, for terminal block width: 5 mm, lettering field size: 5.15 x 5.15 mm, Number of individual labels: 10



# PP-H 2,5/1-L - Plug

3210062

<https://www.phoenixcontact.com/us/products/3210062>



## ZBF 5,LGS:FORTL.ZAHLEN - Zack Marker strip, flat

0808671

<https://www.phoenixcontact.com/us/products/0808671>



Zack Marker strip, flat, Strip, white, labeled, printed horizontally: consecutive numbers 1 ... 10, 11 ... 20, etc. up to 491 ... 500, mounting type: snapped, for terminal block width: 5 mm, lettering field size: 5.15 x 5.15 mm, Number of individual labels: 10

---

## ZBF 5,QR:FORTL.ZAHLEN - Zack Marker strip, flat

0808697

<https://www.phoenixcontact.com/us/products/0808697>



Zack Marker strip, flat, Strip, white, labeled, Printed vertically: consecutive numbers 1 ... 10, 11 ... 20, etc. up to 91 ... 100, mounting type: snapped, for terminal block width: 5 mm, lettering field size: 5.15 x 5.15 mm, Number of individual labels: 10

# PP-H 2,5/1-L - Plug

3210062

<https://www.phoenixcontact.com/us/products/3210062>



## ZBF 5,LGS:GERADE ZAHLEN - Zack Marker strip, flat

0810821

<https://www.phoenixcontact.com/us/products/0810821>



Zack Marker strip, flat, Strip, white, labeled, printed horizontally: consecutive even numbers 2 ... 20, 22 ... 40, etc. up to 82 ... 100, mounting type: snapped, for terminal block width: 5 mm, lettering field size: 5.15 x 5.15 mm, Number of individual labels: 10

---

## ZBF 5,LGS:UNGERADE ZAHLEN - Zack Marker strip, flat

0810863

<https://www.phoenixcontact.com/us/products/0810863>



Zack Marker strip, flat, Strip, white, labeled, printed horizontally: Odd numbers 1 - 19, 21 - 39, etc. up to 81 - 99, mounting type: snapped, for terminal block width: 5 mm, lettering field size: 5.15 x 5.15 mm, Number of individual labels: 10

# PP-H 2,5/1-L - Plug

3210062

<https://www.phoenixcontact.com/us/products/3210062>



## UC-TMF 5 - Marker for terminal blocks

0818153

<https://www.phoenixcontact.com/us/products/0818153>



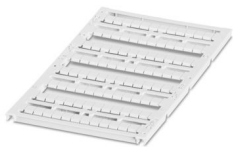
Marker for terminal blocks, Sheet, white, unlabeled, can be labeled with: BLUEMARK ID COLOR, BLUEMARK ID, BLUEMARK CLED, PLOTMARK, CMS-P1-PLOTTER, mounting type: snapped, for terminal block width: 5.2 mm, lettering field size: 4.6 x 5.1 mm, Number of individual labels: 96

---

## UC-TMF 5 CUS - Marker for terminal blocks

0824638

<https://www.phoenixcontact.com/us/products/0824638>



Marker for terminal blocks, can be ordered: by sheet, white, labeled according to customer specifications, mounting type: snap into flat marker groove, for terminal block width: 5.2 mm, lettering field size: 4.6 x 5.1 mm, Number of individual labels: 96

# PP-H 2,5/1-L - Plug

3210062

<https://www.phoenixcontact.com/us/products/3210062>



## UCT-TMF 5 - Marker for terminal blocks

0828744

<https://www.phoenixcontact.com/us/products/0828744>



Marker for terminal blocks, Sheet, white, unlabeled, can be labeled with: TOPMARK NEO, TOPMARK LASER, BLUEMARK ID COLOR, BLUEMARK ID, BLUEMARK CLED, THERMOMARK PRIME, THERMOMARK CARD 2.0, THERMOMARK CARD, mounting type: snapped, for terminal block width: 5.2 mm, lettering field size: 4.4 x 4.7 mm, Number of individual labels: 72

---

## UCT-TMF 5 CUS - Marker for terminal blocks

0829658

<https://www.phoenixcontact.com/us/products/0829658>



Marker for terminal blocks, can be ordered: by sheet, white, labeled according to customer specifications, mounting type: snap into flat marker groove, for terminal block width: 5.2 mm, lettering field size: 4.4 x 4.7 mm, Number of individual labels: 72

## PP-H 2,5/1-L - Plug

3210062

<https://www.phoenixcontact.com/us/products/3210062>



## DFS-SP-H 2,5 - Flange cover

3061431

<https://www.phoenixcontact.com/us/products/3061431>

Flange cover, depth: 24.7 mm, width: 4.5 mm, height: 35.8 mm, color: gray



---

## ST-BW - Actuation tool

1207608

<https://www.phoenixcontact.com/us/products/1207608>

Actuation tool, for all 2.5 mm<sup>2</sup> - 4.0 mm<sup>2</sup> spring-cages



---

Phoenix Contact 2024 © - all rights reserved  
<https://www.phoenixcontact.com>

Phoenix Contact USA  
586 Fulling Mill Road  
Middletown, PA 17057, United States  
(+717) 944-1300  
[info@phoenixcon.com](mailto:info@phoenixcon.com)