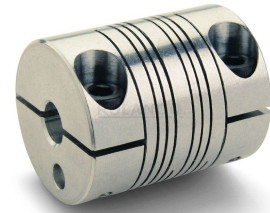
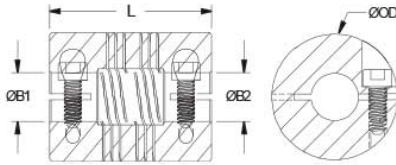




PCR8-2-2-A

Ruland PCR8-2-2-A, 1/8" x 1/8" Four Beam Coupling, Aluminum, Clamp Style, 0.500" OD, 0.750" Length




Description

Ruland PCR8-2-2-A is a clamp style four beam coupling with 0.1250" x 0.1250" bores, 0.500" OD, and 0.750" length. It is machined from a single piece of material and feature two sets of two spiral cuts. This gives it higher torque capacity, lower windup, and larger body sizes than single beam couplings. PCR8-2-2-A is zero-backlash and has a balanced design for reduced vibration at high speeds of up to 6,000 RPM. This four beam spiral coupling is zero-backlash and has a balanced design for reduced vibration at high speeds of up to 6,000 RPM. All hardware is metric and tests beyond DIN 912 12.9 standards for maximum torque capabilities. PCR8-2-2-A is made from 7075 aluminum for lightweight and low inertia. It is machined from bar stock that is sourced exclusively from North American mills and RoHS3 and REACH compliant. PCR8-2-2-A is manufactured in our Marlborough, MA factory under strict controls using proprietary processes.

Product Specifications

Bore (B1)	0.1250 in	Small Bore (B2)	0.1250 in
B1 Max Shaft Penetration	0.356 in	B2 Max Shaft Penetration	0.356 in
Outer Diameter (OD)	0.500 in	Bore Tolerance	+0.001 in / -0.000 in
Length (L)	0.750 in	Recommended Shaft Tolerance	+0.0000 in / -0.0005 in
Cap Screw	M2	Screw Material	Alloy Steel
Hex Wrench Size	1.5 mm	Screw Finish	Black Oxide
Seating Torque	0.6 Nm	Number of Screws	2 ea
Dynamic Torque Reversing	2 lb-in	Angular Misalignment	3.0°
Dynamic Torque Non-Reversing	4 lb-in	Parallel Misalignment	0.008 in
Static Torque	8 lb-in	Axial Motion	0.005 in
Torsional Stiffness	0.750 Deg/lb-in	Moment of Inertia	0.0004 lb-in ²
Maximum Speed	6,000 RPM	Full Bearing Support Required?	Yes
Zero-Backlash?	Yes	Balanced Design	Yes
Torque Wrench	TW:BT-1R-1/4-5.3	Recommended Hex Key	Metric Hex Keys
Material Specification	7075-T651 Extruded and Drawn Aluminum Bar	Temperature	-40°F to 225°F (-40°C to 107°C)
Finish Specification	Bright, No Plating	Manufacturer	Ruland Manufacturing
Country of Origin	USA	Weight (lbs)	0.011500
UPC	634529032862	Tariff Code	8483.60.8000
UNSPC	31163003		

Note 1	Torque ratings are at maximum misalignment.
Note 2	Performance ratings are for guidance only. The user must determine suitability for a particular application.
Note 3	Torque ratings for the couplings are based on the physical limitations/failure point of the machined beams. Under normal/typical conditions the hubs are capable of holding up to the rated torque of the machined beams. In some cases, especially when the smallest standard bores are used or where shafts are undersized, slippage on the shaft is possible below the rated torque of the machined beams. Please consult technical support for more assistance.

Prop 65  **WARNING** This product can expose you to the chemical Ethylene Thiourea, known to the State of California to cause cancer and birth defects or other reproductive harm. For more information go to www.P65Warnings.ca.gov.

Installation Instructions

1. Align the bores of the PCR8-2-2-A four beam coupling on the shafts that are to be joined and

determine if the misalignment parameters are within the limits of the coupling. (*Angular Misalignment: 3°*, *Parallel Misalignment: 0.008 in*, *Axial Motion: 0.005 in*)

2. Fully tighten the M2 screw on one hub to the recommended seating torque of 0.6 Nm using a 1.5 mm hex torque wrench.
 3. Before tightening the screws on the second hub, rotate the coupling by hand to allow it to reach its free length.
 4. Tighten the screws on the second hub to the recommended seating torque. Make sure the coupling remains axially relaxed and the misalignment angle remains centered along the length of the coupling.
 5. The shafts may extend into the relieved portion of the bore as long as it does not exceed the shaft penetration length of 0.356 in.
-