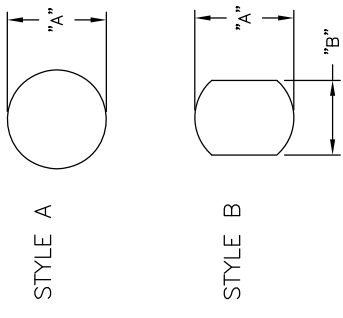
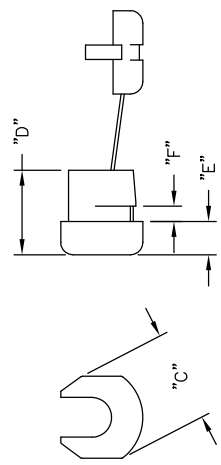


PART NUMBER	WIRES ACCOMMODATED	REF. CABLE STYLE	APPROX. WIRE SIZE	MOUNTING HOLES			C REF.	D	E REF.	F MAX. PANEL THICKNESS
				A	B	B				
SRB-F-1	SPT-1	FLAT	3.0 X 5.6 (.118 X .220)	9.5 (.374)	8.7 (.343)	10.8 (.425)	10.4 (.409)	4 (.157)	1.6 (.063)	
SRB-F-3				11 (.433)	9.9 (.390)	12.1 (.476)		3.2 (.126)		
SRB-F-6				12.7 (.500)	11.8 (.465)	12.5 (.492)		4 (.157)		
SRB-F-8	SPT-2	FLAT	3.71 X 7.6 (.146 X .299)	12.7 (.500)	11.8 (.465)	13.9 (.547)	10.5 (.413)	4 (.157)	1.6 (.063)	
SRB-F-9				13.1 (.516)	13.1 (.516)	13.9 (.547)				2.5 (.098)
SRB-R-1	SVI	ROUND	6.4 (.252)	12.7 (.500)	11.5 (.453)	14.2 (.559)	10.9 (.429)	4.2 (.165)	1.6 (.063)	
SRB-R-2				13.1 (.516)	12.7 (.500)	14.2 (.559)				2.5 (.098)
SRB-R-3	SJT #18/3	ROUND	7.6 (.299)	15.9 (.626)	14 (.551)	17.8 (.701)	14.8 (.583)	5.6 (.220)	1.6 (.063)	
SRB-R-4				19.8 (.780)	17.8 (.701)	17.8 (.701)				3.2 (.126)
SRB-R-7	SJT #16/3	ROUND	8.2 - 9.2 (.323 - .362)	19.8 (.780)	16.5 (.650)	17.3 (.681)	19.1 (.750)	5.8 (.228)	1.6 (.063)	
SRB-R-8				19.8 (.780)	19.8 (.780)	17.3 (.681)				3.2 (.126)
SRB-R-9	SJT #14/3	ROUND	9.2 - 10.5 (.362 - .413)	19.8 (.780)	16.5 (.650)	21.5 (.847)	19.4 (.764)	7.8 (.307)	1.6 (.063)	
SRB-R-10				19.8 (.780)	19.8 (.780)	21.5 (.847)				3.2 (.126)

MOUNTING HOLE



BUSHING DIMENSIONS



- NOTES:  
 1. MATERIAL: NYLON 6/6 UL 94 V-2 (RMS-315).  
 2. COLOR: BLACK.  
 3. UL LISTED, CARD # E107293

E	SEE CO 200682 FOR CHANGES	SK 06.16.2011
D	SEE CO 200560 FOR CHANGES	SK 07/23/10
C	SEE CO 200439 FOR CHANGES	SK 09.17.09
B	SEE CO 200294 FOR CHANGES	SK 12.12.08
A	RELEASED FOR PRODUCTION (SEE ECN 1161)	S.J. 05.02.06
REV	DESCRIPTION	ENGR DATE

TITLE:	STRAIN RELIEF BUSHINGS		
TOLERANCES UNLESS NOTED	FILE #	SRB	DWN: R.D.G.
10<X<S30=+0.3	MAT'L:	SEE NOTES	DT: 04/20/06
30<X<S50=+0.5	RE:	RICHO, INC.	APP: R.D.G.
ANG=±1°		RICHO INC.	CHKD: S.J.
		ENG@RICHO-INC.COM	PART #
		(773) 539-4060	SEE TABLE
			TYPE
			CA