



MEAS | MEAS M5200

TE Internal #: M5244-000005-01KPG

TE Internal Description: PRESS XDCR M5244-000005-01KPG

Compact Industrial Pressure Transducer

[View on TE.com >](#)

Sensors > Pressure Sensors > Pressure Transducers > Compact Industrial Pressure Transducer



Pressure Sensor Type: **Industrial Pressure Transducer**

Pressure: **68.94 bar [1000 psi]**

Pressure Type: **Gauge**

Supply Voltage Range: **8 - 30 V**

Output Signal Type: **1 - 5 V**

[All Compact Industrial Pressure Transducer \(12\)](#)

Features

Product Type Features

Pressure Sensor Type	Industrial Pressure Transducer
Pressure Type	Gauge

Configuration Features

Electrical Connection	Packard
-----------------------	---------

Electrical Characteristics

Supply Voltage Range	8 - 30 V
----------------------	----------

Dimensions

Hex Width Across Flats	24 mm[.944 in]
Product Height	57.15 mm[2.25 in]

Usage Conditions

Pressure	68.94 bar[1000 psi]
Operating Temperature Range	-40 - 125 °C[-40 - 257 °F]

Operation/Application

Proof Pressure Range	2X Rated
Output Signal Type	1 - 5 V
Pressure Accuracy	±0.25% FSO



Other

Sensor Options	Adhesive Label, No Snubber
Port Fitting	1/8 MNPT

Product Compliance

[For compliance documentation, visit the product page on TE.com>](#)

EU RoHS Directive 2011/65/EU	Compliant with Exemptions
EU ELV Directive 2000/53/EC	Out of Scope
China RoHS 2 Directive MIIT Order No 32, 2016	Restricted Materials Above Threshold
EU REACH Regulation (EC) No. 1907/2006	<p>Current ECHA Candidate List: JAN 2024 (240)</p> <p>Candidate List Declared Against: JUN 2020 (209)</p> <p>SVHC > Threshold:</p> <p>Dodecamethylcyclohexasiloxane (D6) (.85% in 736 RED GLUE)</p> <p>Article Safe Usage Statements: Wash thoroughly after handling. Recycle if possible and dispose of the article by following all applicable governmental regulations relevant to your geographic location.</p>

Halogen Content	Not Yet Reviewed for halogen content
Solder Process Capability	Not reviewed for solder process capability

Product Compliance Disclaimer

This information is provided based on reasonable inquiry of our suppliers and represents our current actual knowledge based on the information they provided. This information is subject to change. The part numbers that TE has identified as EU RoHS compliant have a maximum concentration of 0.1% by weight in homogenous materials for lead, hexavalent chromium, mercury, PBB, PBDE, DBP, BBP, DEHP, DIBP, and 0.01% for cadmium, or qualify for an exemption to these limits as defined in the Annexes of Directive 2011/65/EU (RoHS2). Finished electrical and electronic equipment products will be CE marked as required by Directive 2011/65/EU. Components may not be CE marked. Additionally, the part numbers that TE has identified as EU ELV compliant have a maximum concentration of 0.1% by weight in homogenous materials for lead, hexavalent chromium, and mercury, and 0.01% for cadmium, or qualify for an exemption to these limits as defined in the Annexes of Directive 2000/53/EC (ELV). Regarding the REACH Regulation, the information TE provides on SVHC in articles for this part number is based on the latest European Chemicals Agency (ECHA) 'Guidance on requirements for substances in articles' posted at this URL: <https://echa.europa.eu/guidance-documents/guidance-on-reach>

Compatible Parts



Also in the Series | MEAS M5200



Pressure Transducers(12)

Customers Also Bought



TE Part # SPD-25-3
STRING POT 25 INCH RANGE



TE Part # 2-1419104-1
T9AS1D22-24



TE Part # 3-1879022-7
SMF3 10K 5%



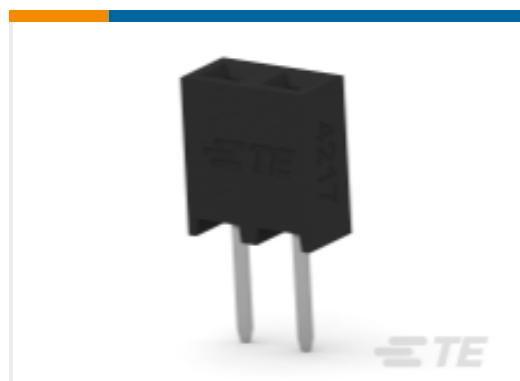
TE Part # D5151-00000G-001PD
PRESS XDCR D5151-00000G-001PD



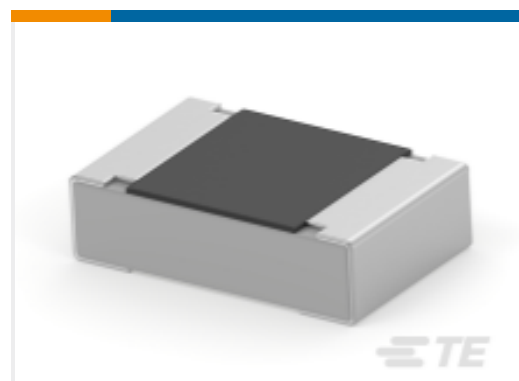
TE Part # 1393194-9
T77S1D10-12



TE Part # U5244-000005-030PA
PRESS XDCR U5244-000005-030PA



TE Part # 2314876-2
2P,2MM,BB,REC,SRVT,2,7,0.1AU,TUBE



TE Part # 2-2176342-6
CRGCO 0805 15K 5%



TE Part # 1-2176343-1
CRGCO 1206 68R 1%

Documents

[CAD Files](#)

[3D PDF](#)

[3D](#)

[Customer View Model](#)

[ENG_CVM_CVM_M5244-000005-01KPG_K.2d_dxf.zip](#)

[English](#)



Customer View Model

[ENG_CVM_CVM_M5244-000005-01KPG_K.3d_igs.zip](#)

English

Customer View Model

[ENG_CVM_CVM_M5244-000005-01KPG_K.3d_stp.zip](#)

English

By downloading the CAD file I accept and agree to the [Terms and Conditions](#) of use.

Datasheets & Catalog Pages

[M5200](#)

English