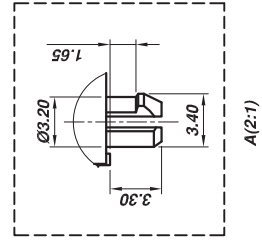
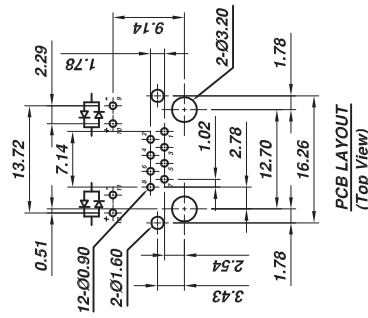


**Recommended Panel Cutout**



- Material:**
- Housing: Nylon (UL 94V-0)
  - Color: Black
  - Spring Wire: 0.35mm Diameter Phosphor Bronze
  - Gold Plating over Nickel
  - Temp. Range: -40°C/+85°C
  - Soldering Temp: 235°C
  - Durability: 500 Mating cycles Min.
- Electrical:**
- Current rating: 1.5A Max.
  - Voltage rating: 120V AC
  - Insulation Resistance: 500 MΩ Min.
  - Contact Resistance: 20mΩ Max.
  - Dielectric Voltage: 1,000 Vrms for 60 sec. min.

RoHS Compliant

- Part Number  
P J068-8P8CX5XX
- LED1 (See Chart)  
LED2 (See Chart)
- |              |        |         |
|--------------|--------|---------|
| Selec. flash | 6=6U"  | 7= 15U" |
| gold plating | 8=30U" | 9=50U"  |

**LED Designation:**

| Code | Forward | Reverse | Code | Forward | Reverse |
|------|---------|---------|------|---------|---------|
| G    | Green   | —       | 4    | Yellow  | Red     |
| Y    | Yellow  | —       | 5    | Green   | Yellow  |
| R    | Red     | —       | 6    | Yellow  | Green   |
| O    | Orange  | —       | 9    | Red     | Green   |
| 3    | Green   | Red     | 0    | Red     | Yellow  |

THESE DRAWINGS AND SPECIFICATIONS ARE THE PROPERTY OF ON-SHORE TECHNOLOGY, INC. AND SHALL NOT BE REPRODUCED, COPIED OR USED IN ANY MANNER WITHOUT THE PRIOR WRITTEN CONSENT OF ON-SHORE TECHNOLOGY, INC.



**ON-SHORE TECHNOLOGY, INC.**

|              |   |                                |
|--------------|---|--------------------------------|
| TITLE        | P J068, side entry, shielded, SMT, w/LEDs, 8pos, 8 conf, grounding tabs |                                |
| PART NO.     | P J068-8P8CX5XX   | DWG NO. P J068-8P8CX5XX.DWG    |
| APPROVED     | Billy<br>2012.01.01   | DESIGNED<br>Tony<br>2012.06.01 |
| CHECKED      | John<br>2012.06.01  | DRAWN<br>Steven<br>2012.06.01  |
| UNIT: mm     |   | Tolerance                      |
| SCALE: NONE  |   | X.XX ±0.25                     |
| SHEET: 01/01 |   | X.XXX ±0.13                    |
| REV.: A      |   | X.XXXX ±0.05                   |