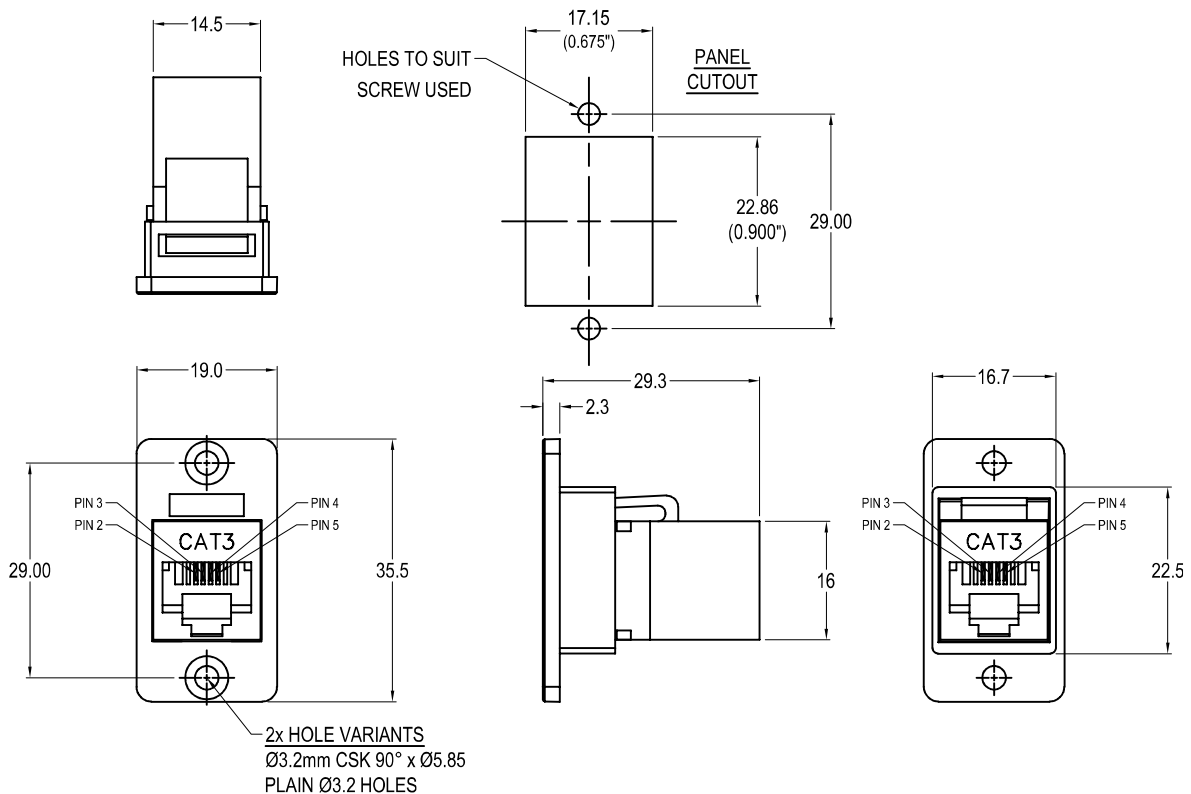


# CLIFF

## SLIM CAT3 RJ11 6P4C FRONT MOUNTING METAL FRAME FEEDTHROUGH



### Part No.

- CP30623M** SLIM FM Cat3 RJ11 6P4C Nickel frame, CSK holes  
**CP30623MB** SLIM FM Cat3 RJ11 6P4C Black metal frame, CSK holes  
**CP30623MX1** SLIM FM Cat3 RJ11 6P4C Nickel frame, Ø3.2 PLAIN holes  
**CP30623MBX1** SLIM FM Cat3 RJ11 6P4C Black metal frame, Ø3.2 PLAIN holes

### Feedthrough Features

- Fits standard rectangular cutout.
- Various hole mounting options.
- No soldering or punch termination. Use standard cable for each connector style.
- Low rear profile.

### General:

Please note: Functionality is affected by cable quality, length and cable wiring configuration.

### Material:

1. RJ11 In-Line Coupler:  
PC/ABS, UL 94V-0, Black colour
2. RJ11 In-Line Coupler Contact:  
Phosphor Bronze, 3-50 micro inches  
gold plating over nickel plate.
3. PCB: FR4, UL 94V-0
4. Frame: Diecast, Nickel or Black plated

### Performance:

1. Operating temperature: Min -10°C Max +60°C