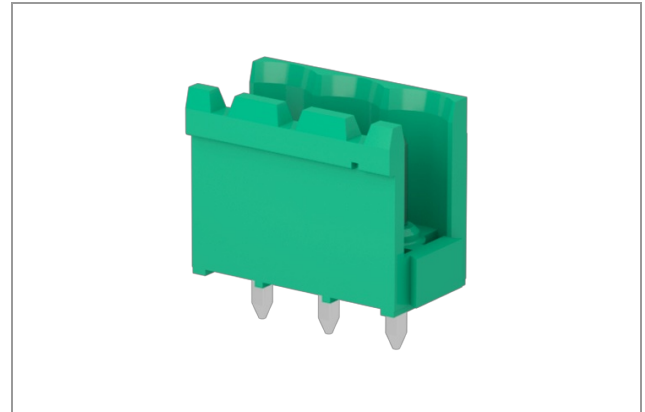


## CIM020M5 - Header

Number of poles: 2, 16A, 2.5mm<sup>2</sup>, 300V, Pitch 5,08 mm, Modular, Connection Angle 0, Green (RAL 6032), Soldering technology Wave, UL, VDE, IMQ, CSA



Number of poles:	2
Number of levels:	1
Sides configuration:	Modular
Pitch:	5,08 mm
Voltage:	300 V
Current :	16 A
Wire section:	0.05 ÷ 2.5 mm <sup>2</sup>
Available approvals:	UL, VDE, IMQ, CSA

## General Data

### Features

Screw dimension	na
Operating temperature range	-40°C ÷ 105°C
Contact resistance	<15 mOhm
Insulation resistance	>1 GOhm

## Certifications

### CSA (n.LR 102896)

Rated voltage	300 V
Nominal current	15 A
Wire section	0

### IMQ (n.EM672)

Rated voltage	300 V		
Nominal current	12 A		
Wire section	2.5 mm <sup>2</sup>		
Insulating category	I		
Overvoltage category/Pollution degree	III/3	III/2	II/2
Impulse voltage	4kV	4kV	4kV
Rated voltage	250V	300V	600V
Insulation voltage	250V	320V	630V

### UL (n.E167473)

Usage Group	B	C	D*
Rated voltage	300 V	-	300 V
Nominal current	15 A		
Wire section	0		

\* These limited ratings are applicable to a terminal block for use in or with industrial control equipment whereby the load on any single circuit of the terminal block does not exceed 15A at 51-150V, 10A at 151-300V, or 5A at 301-600V, or the maximum ampere rating, whichever is less.

## VDE (n.40027448 Reg.-Nr. 112754)

Rated voltage	250 V		
Nominal current	16 A		
Wire section	0		
Insulating category	III		
Overvoltage category/Pollution degree	III/3	III/2	II/2

## Materials

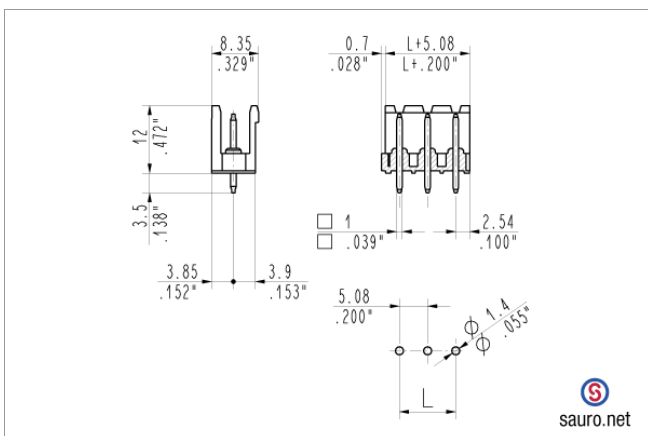
### Components

Terminal contact	Nickel and tin on copper alloy
NA	NA
Insulating housing material	PA Polyamide
Insulating material group	I (CTI $\geq$ 600V)
Self-extinguishing class UL94	V0

### Available colors

green	(similar to RAL 6032)
black	(similar to RAL 9005)
light grey	(similar to RAL 7035)
dark gray	(similar to RAL 7040)
orange	(similar to RAL 2003)
blue	(similar to RAL 5012)
red	(similar to RAL 3017)
another colors	(on demand)

## Technical drawing



## Derating curve

