

PREMISE WIRING PRODUCTS
FIBER OPTIC CONNECTIVITY
PERIPHERAL CABLES
O.E.M. / CUSTOM CABLES
AUDIO / VIDEO CABLES
BULK CABLE & CONNECTORS

GLOBAL SOURCING CALIFORNIA MANUFACTURING



Shaxon Industries, Inc.

Customer Service, Quality Products & Custom Manufacturing Since 1978

4852 E. La Palma Ave. Anaheim CA 92807 • Phone: (800) 345-8295 • Fax: (800) 345-5106 • www.shaxon.com

Spectrum[™] CATEGORY 5e PRODUCTS

- 12 Patch Cables**
- 17 Patch Panels, Keystone Jacks & Couplers**
- 18 Ultra High-density Patch Panels**
- 19 Ultra High-density Feed-through Panels**
- 20 Telco Patch Panels & Harmonicas**
- 21 Trunk & Hydra Cables**
- 22 I I O Wiring Products**
- 24 Industrial/All Weather Products**

Spectrum™ CATEGORY 5e PATCH CABLES

Spectrum™ Category 5e 350MHz premium patch cables offer the following features and benefits:

- Injection-molded boots for Category 5e bend radius requirements and sealing of the plug/cable interface
- Flush mold design to allow booted patch cables to be installed side by side in high-density patch fields
- Short body plugs for minimal “de-twisting” of the cable pairs during manufacturing
- 24AWG stranded construction for maximum flexibility
- Compliant with EIA/TIA Category 5e specifications



Replace zz with custom length and replace xx-X with color code below. Place an X at the end of the part number to order a crossover cable.



Spectrum™ CATEGORY 5e STRANDED

PATCH CABLES, FLUSH MOLDED BOOT STYLE

UL624M801xx-XF	1ft
UL624M802xx-XF	2ft
UL624M803xx-XF	3ft
UL624M804xx-XF	4ft
UL624M805xx-XF	5ft
UL624M806xx-XF	6ft
UL624M807xx-XF	7ft
UL624M810xx-XF	10ft
UL624M814xx-XF	14ft
UL624M815xx-XF	15ft
UL624M820xx-XF	20ft
UL624M825xx-XF	25ft
UL624M850xx-XF	50ft
UL624M875xx-XF	75ft
UL624M8100xx-XF	100ft
C624M8zzxx-XF	Custom length



Spectrum™ CATEGORY 5e STRANDED

PATCH CABLES, NON-BOOTED STYLE

UL624-801xx	1ft
UL624-802xx	2ft
UL624-803xx	3ft
UL624-804xx	4ft
UL624-805xx	5ft
UL624-806xx	6ft
UL624-807xx	7ft
UL624-810xx	10ft
UL624-814xx	14ft
UL624-815xx	15ft
UL624-820xx	20ft
UL624-825xx	25ft
UL624-850xx	50ft
UL624-875xx	75ft
UL624-8100xx	100ft
C624-8zzxx	Custom length



Boot Style and Color Code											
COLOR	Clear Boot	Gray	Blue	White	Red	Black	Green	Yellow	Orange	Pink	Purple
MOLDED BOOT STYLE	xx-C	GY-3	BU-8	WT-6	RD-5	BK-1	GN-4	YL-7	OR-9	PK-B	PR-A
NON-BOOTED STYLE	N/A	GY	BU	WT	RD	BK	GN	YL	OR	PK	PR

CATEGORY 5e CUSTOM PATCH CABLES

All cable is 24AWG unless otherwise listed.
 Replace zz with custom length. Place an X at the end of the part number to order a crossover cable.
 Contact the factory for boot & cable color choices.

Spectrum™ CATEGORY 5e PATCH CABLE,
 MOLDED FINGER BOOT STYLE

- C624M8zzGY-3G** Stranded, PVC, gray
- C625M8zzGY-3G** Solid, PVC, gray



Spectrum™ CATEGORY 5e PATCH CABLE,
 ASSEMBLED FINGER BOOT STYLE

- C624-8zzGY-CG** Stranded, PVC, gray jacket, clear boot
- C625-8zzGY-CG** Solid, PVC, gray jacket, clear boot
- C625P-8zzGY-CG** Solid, plenum, gray jacket, clear boot



Spectrum™ CATEGORY 5e PATCH CABLES,
 MOLDED BOOT STYLE

- C625M8zzGY-3B** Solid, PVC, gray



Spectrum™ CATEGORY 5e PATCH CABLES,
 FLUSH MOLDED BOOT STYLE

- C625M8zzGY-3F** Solid, PVC, gray



Spectrum™ CATEGORY 5e PATCH CABLE,
 SLIDE-ON BOOT STYLE

- C624-8zzGY-3B** Stranded, PVC, gray
- C625-8zzGY-3B** Solid, PVC, gray
- C625P-8zzGY-3B** Solid, plenum, gray



Spectrum™ CATEGORY 5e PATCH CABLE,
 NON-BOOTED STYLE

- C625-8zzGY** Solid, PVC, gray
- C625P-8zzGY** Solid, plenum, gray



Spectrum™ CATEGORY 5e PATCH CABLES

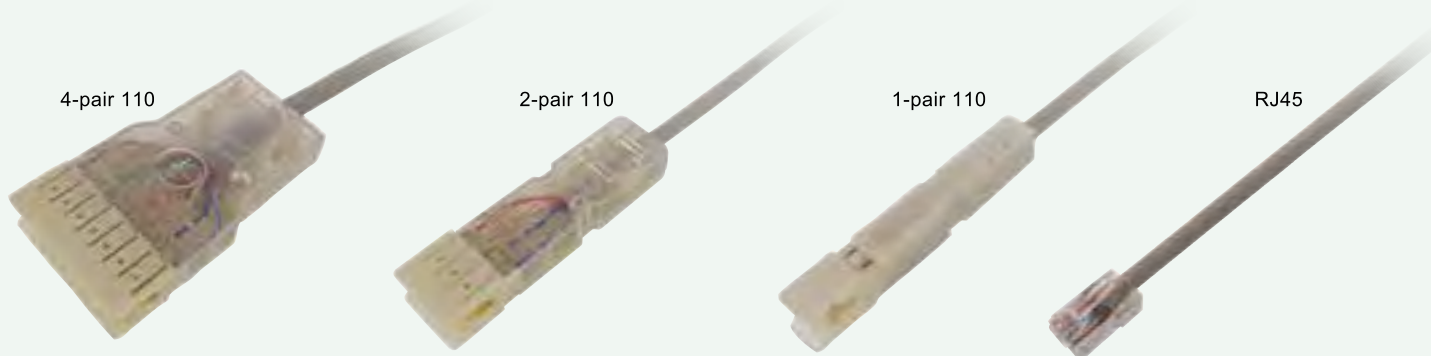
Replace zz with custom length. Place an X at the end of the part number to order a crossover cable. Contact the factory for boot & cable color choices.



Spectrum™ CATEGORY 5E 60° MOLDED 24AWG PATCH CABLES

Spectrum™ Category 5e Molded 60° Angled patch cables (M6A) offer a unique solution for installation environments with tight space requirements. M6A cables support category 5e bend radius requirements and take up less room in crowded cabinets and racks. 60 degree to standard RJ45 plug and 60 degree to 60 degree are available. Tab up or tab down design can be specified.

- C632M8zzBK-1A** RJ45 (tab-up) to RJ45 (tab-down), black
- C633M8zzBK-1A** RJ45 (tab-up) to RJ45 (tab-up), black
- C634M8zzBK-1A** RJ45 (tab-down) to RJ45 (tab-down), black



Spectrum™ CATEGORY 5e 110 24AWG PATCH CABLES

Spectrum™ Category 5e 110 to 110 and 110 to RJ45 plug patch cords feature direct 110 block connection capability and can interface 110 type connectivity to a female RJ45 jack for various data connection requirements.

- C611-8zzGY** 4-pair 110 to RJ45 cable, gray
- C611-4zzGY** 2-pair 110 to RJ45 cable, gray
- C611-2zzGY** 1-pair 110 to RJ45 cable, gray
- C610-8zzGY** 4-pair 110 to 4-pair 110 cable, gray
- C610-4zzGY** 2-pair 110 to 2-pair 110 cable, gray
- C610-2zzGY** 1-pair 110 to 1-pair 110 cable, gray

KEYSTONE & FEMALE PATCH CABLES

Replace zz with custom length. Contact the factory for boot & cable color choices.

Spectrum™ CATEGORY 5e 24AWG STRANDED KEYSTONE PATCH CABLES

Spectrum™ Category 5e keystone outlet compatible cables offer an innovative solution for plug and play patching. Molded keystone outlet cables (MKO6) and assembled keystone outlet cables are fully terminated and tested at the factory and need only to be plugged into a keystone panel or plate in the field for to create a pre-terminated data run. MKO6 cables are available in plug to jack or plug to plug versions.



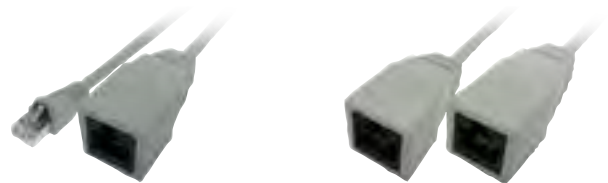
Molded keystone

Assembled keystone

- | | |
|-----------------------|---|
| C603-8zzGY | Assembled female keystone to non-booted RJ45 plug cable, gray |
| C603-8zzGY-X | Assembled female keystone to non-booted RJ45 plug crossover cable, gray |
| C615M8zzGY-3F | Molded female keystone to molded-boot RJ45 plug cable, gray |
| C615M8zzGY-3FX | Molded female keystone to molded-boot RJ45 plug crossover cable, gray |
| C614M8zzGY | Molded female keystone to molded female keystone cable, gray |
| C614M8zzGY-X | Molded female keystone to molded female keystone crossover cable, gray |
| C617M8zzGY | Molded female keystone to 4-pair 110 cable, gray |

Spectrum™ CATEGORY 5e 24AWG STRANDED MOLDED FEMALE PATCH CABLES

Spectrum™ Category 5e over-molded female RJ45 jack (OFJ6) to RJ45 plug patch cords feature a rugged RJ45 female mold for extension and conversion cable applications. OFJ6 cables are available in plug to jack or plug to plug versions and can be built in custom lengths and colors.



Male to female

Female to female

- | | |
|-----------------------|--|
| C613M8zzGY-3F | Male to female cable, gray |
| C613M8zzGY-3FX | Male to female crossover cable, gray |
| C612M8zzGY | Female to female cable, gray |
| C612M8zzGY-X | Female to female crossover cable, gray |
| C616M8zzGY | Female RJ45 to 4-pair 110 cable, gray |

Spectrum™ CATEGORY 5e 26AWG STRANDED SHIELDED MOLDED FEMALE PATCH CABLES

- | | |
|------------------------|--|
| C613SM8zzGY-3F | Male to female cable, gray |
| C613SM8zzGY-3FX | Male to female crossover cable, gray |
| C612SM8zzGY | Female to female cable, gray |
| C612SM8zzGY-X | Female to female crossover cable, gray |



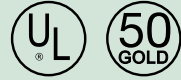
Male to female, shielded

Female to female, shielded

SHIELDED PATCH CABLES

Spectrum™ Category 5e STP 350MHz shielded patch cables offer the following features and benefits:

- Injection-molded boots for Category 5e bend radius requirements and sealing of the plug/cable interface
- Flush mold designs (on applicable patch cables) to allow side-by-side installation of booted patch cables in high-density patch fields
- Short body plugs for minimal untwisting of the cable pairs during manufacturing
- 26AWG stranded construction for maximum flexibility
- 24AWG solid on applicable PVC or plenum cables
- Aluminum foil Mylar shield
- Fully shielded RJ45
- Compliant with EIA/TIA Category 5e specifications



Replace xx-X with color code and zz with custom length. Add an X at the end of the part number for crossover cable.

Boot Style and Color Code Key								
COLOR	Gray	Blue	White	Red	Black	Green	Yellow	Orange
MOLDED BOOT STYLE	GY-3	BU-8	WT-6	RD-5	BK-1	GN-4	YL-7	OR-9
NON-BOOTED STYLE	GY	BU	WT	RD	BK	GN	YL	OR



Spectrum™ CATEGORY 5e 350MHz STRANDED SHIELDED MOLDED FLUSH BUMP SNAGLESS BOOT PATCH CABLES

- UL626SM801xx-xF 1ft
- UL626SM803xx-xF 3ft
- UL626SM805xx-xF 5ft
- UL626SM807xx-xF 7ft
- UL626SM810xx-xF 10ft
- UL626SM814xx-xF 14ft
- UL626SM825xx-xF 25ft
- UL626SM850xx-xF 50ft
- UL626SM875xx-xF 75ft
- UL626SM8100xx-xF 100ft
- C626SM8zzxx-xF Custom length



Spectrum™ CATEGORY 5e
350MHz 24AWG SOLID,
SHIELDED, MOLDED BOOT
PATCH CABLES

C625SM8zzxx-xB PVC
C625SMP8zzxx-xB Plenum



Spectrum™ CATEGORY 5e
350MHz 26AWG STRANDED,
SHIELDED, MOLDED NO BUMP
PATCH CABLE

C626SM8zzxx-XM PVC



Spectrum™ CATEGORY 5e
350MHz 24AWG SOLID,
SHIELDED, NON-BOOTED
PATCH CABLES

C625S-8zzxx PVC
C625SP-8zzxx Plenum

PATCH PANELS, KEYSTONE JACKS & COUPLERS

Shaxon's *Spectrum™* Category 5e patch panels support high-speed 1000Base-T, ATM and Gigabit Ethernet networking requirements.



Spectrum™ CATEGORY 5e 110 PATCH PANELS

Rack mount premise distribution panel
Features 50μ modular jacks, fully enclosed PC boards, nylon zip ties and a light duty 110 tool.

Part Number	Description	Dimensions (H x W x D)
MP155HA128	12 port	1.75in x 19in x 2in, 1U
MP155HA248	24 port	1.75in x 19in x 2in, 1U
MP155HA488	48 port	3.5in x 19in x 2in, 2U
MP155HA968	96 port	7in x 19in x 2in, 4U

Compatible with 568A/B wiring



Retail Packaging available on many of our Category 5e patch panel products!



Spectrum™ CATEGORY 5e 110 MINI WALL MOUNT PATCH PANEL

Wall mount premise distribution panel
Features include S89D bracket, 50μ modular jacks, fully enclosed PC boards and a light duty 110 tool.

Part Number	Description	Dimensions (H x W x D)
MP155MA128	12 Port	3.37in x 10in x 1.88in

Compatible with 568A/B wiring



Spectrum™ CATEGORY 5e 110 KEYSTONE JACK

BM603x810

Keystone jack, 568A/B
Replace x with:

- | | |
|----------------|---------------|
| B for black, | U for blue, |
| GY for gray, | G for green, |
| I for ivory, | O for orange, |
| PR for purple, | R for red, |
| W for white, | Y for yellow |



Spectrum™ CATEGORY 5e SHIELDED KEYSTONE JACK

BM603SH810

Shielded keystone jack,
568A/B



Spectrum™ CATEGORY 5e KEYSTONE COUPLER

BM603B-IC8

Feed-through coupler, black



Spectrum™ CATEGORY 5e SHIELDED KEYSTONE COUPLER

BM603S-IC8

Shielded, feed-through coupler



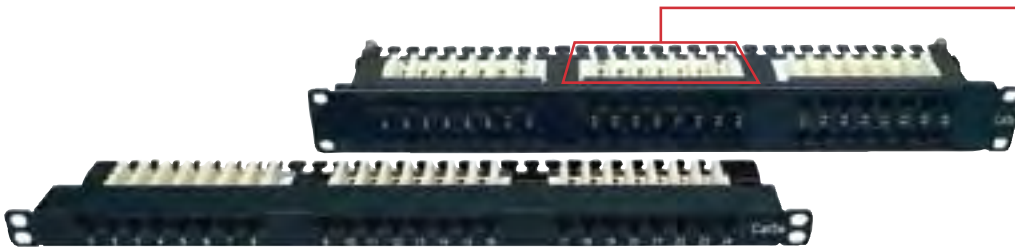
ULTRA HIGH-DENSITY PATCH PANELS



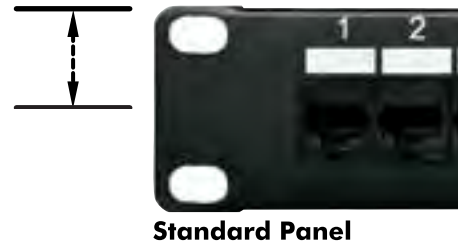
Shaxon's ultra high-density patch panels save valuable rack space by condensing standard RJ45 port counts into half the standard space.

Features and Benefits:

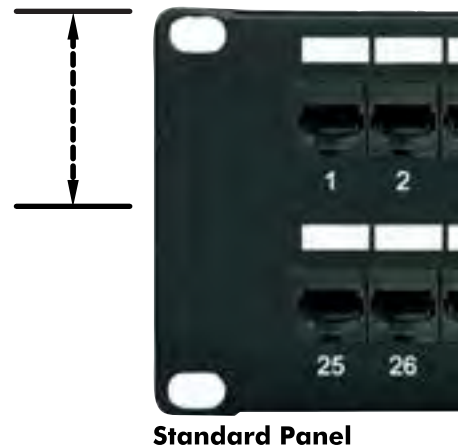
- Saves space in the rack/cabinet
- Dual 568A/B color coding
- 110-type termination
- Integrated wire management on rear of panel



MPH55HA248 24 port Category 5e RJ45-110, 0.875in height, 1/2U



MPH55HA488 48 port Category 5e RJ45-110, 1.75in height, 1U



ULTRA HIGH-DENSITY FEED-THROUGH PANELS



Shaxon's ultra high-density 48 port RJ45 feed-through panels offer space optimization in any rack or cabinet application. Convenient feed-through coupler design connects RJ45 patch cables from front ports to back ports and allows the installation of a cross-connect without the complexity and labor of a punch-down-type panel. Integrated wire management helps route and secure cable to improve reliability and facilitate moves, adds and changes.

Features and Benefits:

- Ultra high-density design saves space in racks and cabinets
- Convenient port designation area
- 48 ports in 1 rackspace (1U)
- Panel includes integrated wire management
- Passes Category 5e channel with minimum of 3db headroom in cross-connect applications
- Integrated wire management is removable for use with conventional duct-style horizontal managers

MPFVH-488-C5E

48 ports, loaded with Category 5e couplers, 1U, markable area for labeling, black powder coat



Shaxon also offers all the standard patch cord and custom patch cord and bundles needed for your installation needs. Contact us at (800) 345-8295, sales@shaxon.com

TELCO PATCH PANELS & HARMONICAS

Shaxon's *Spectrum*™ Category 5e telco patch panels are a convenient solution for high-speed connectivity. Use pre-terminated or field-terminated 25-pair trunk assemblies to easily connect telco patch panels to telco harmonicas supporting up to 6 (568B) to 12 (10/100 Base-T) users. Also includes color-coded snap in icons.

Spectrum™ CATEGORY 5e 568B TELCO PATCH PANELS

Rack mount premise distribution panel

Features 50μ modular jacks, female telco connector and wire management velcro straps.

Part Number	Description	Dimensions (H x W x D)
MP651HA248	24 port, 4 telco	1.75in x 19in x 1.3in, 1U
MP651HA488	48 port, 8 telco	3.5in x 19in x 1.3in, 2U
MP651HA968	96 port, 16 telco	7in x 19in x 1.3in, 4U



Spectrum™ CATEGORY 5e 100BASE-T TELCO PATCH PANELS

Rack-mount premise distribution panel

Features 50μ modular jacks, female telco connector and wire management velcro straps.

Part Number	Description	Dimensions (H x W x D)
MP651HT244	24 port, 2 telco	3.5in x 19in x 1.3in, 2U
MP651HT484	48 port, 4 telco	3.5in x 19in x 1.3in, 2U
MP651HT964	96 port, 8 telco	7in x 19in x 1.3in, 4U



Spectrum™ CATEGORY 5e

10/100 BASE-T TELCO HARMONICA

Wall-mount or stand-alone premise distribution panel
Features 50μ modular jacks, female telco connector and wire management velcro strap.

Part Number	Description
MH651T-412BF	12 port; pins 1, 2, 3 and 6 are active



Spectrum™ CATEGORY 5e

568B TELCO HARMONICA

Wall-mount or stand-alone premise distribution panel
Features 50μ modular jacks, female telco connector and wire management velcro strap.

Part Number	Description
MH651A-8BF	6 port

25-PAIR TRUNK CABLES & HYDRA CABLES

Shaxon manufactures a complete line of Category 5e hydra and 25-pair trunk cables using AVAYA™ connectors. All assemblies can be made in custom lengths with 90°, 110° or 180° hoods.

TRUNK CABLES: PVC Voice/Data interface cable, AVAYA™ connectors
 Replace zz with custom length. Replace x with P for PVC or T for Plenum.

CATEGORY 5e TRUNK, FEMALE TO FEMALE

MC5L6x99FFzz 90° female to 90° female

CATEGORY 5e TRUNK, MALE TO MALE

MC5L6x99MMzz 90° male to 90° male
MC5L6x88MMzz 180° male to 180° male
MC5L6x11MMzz 110° male to 110° male
MC5L6x98MMzz 90° male to 180° male
MC5L6x19MMzz 110° male to 90° male
MC5L6x18MMzz 110° male to 180° male

CATEGORY 5e TRUNK, MALE TO FEMALE

MC5L6x99MFzz 90° male to 90° female
MC5L6x19MFzz 110° male to 90° female
MC5L6x89MFzz 180° male to 90° female

CATEGORY 5e TRUNK, MALE/FEMALE TO NO CONNECTOR

MC5L6x9NMNzz 90° male to no connector
MC5L6x8NMNzz 180° male to no connector
MC5L6x1NMNzz 110° male to no connector
MC5L6x9NFNzz 90° female to no connector



Hood Types:

180°



110°



90°



Note: Female connectors are only available in 90°.

HYDRA CABLES: Voice/Data interface hydra, AVAYA™ telco
 Replace z with custom length and replace x with a 9 for 90°, 1 for 110°, 8 for 180°.

CATEGORY 5e HYDRA, 90° FEMALE PLENUM

HF8A4T6-z-6-9T 6-leg 568B 8-wire RJ45 8C
HF8E4T6-z-6-9T 6-leg 568A 8-wire RJ45 8C
HF4T4T6-z-12-9T 12-leg 100Base-T, 4-wire RJ45 (1, 2, 3, 6) 4C

CATEGORY 5e HYDRA, 90° FEMALE PVC

HF8A4T6-z-6-9P 6-leg 568B 8 wire RJ45 8C
HF8E4T6-z-6-9P 6-leg 568A 8 wire RJ45 8C
HF4T4T6-z-12-9P 12-leg 100Base-T, 4 wire RJ45 (1, 2, 3, 6) 4C

CATEGORY 5e HYDRA, MALE PVC

HM8A4T6-z-6-xP 6-leg 568B 8-wire RJ45 8C
HM8E4T6-z-6-xP 6-leg 568A 8-wire RJ45 8C
HM4T4T6-z-12-xP 12-leg 100Base-T, 4-wire RJ45 (1, 2, 3, 6) 4C

CATEGORY 5e HYDRA, MALE PLENUM

HM8A4T6-z-6-xT 6-leg 568B 8-wire RJ45 8C
HM8E4T6-z-6-xT 6-leg 568A 8-wire RJ45 8C
HM4T4T6-z-12-xT 12-leg 100Base-T, 4-wire RJ45 (1, 2, 3, 6) 4C



110 WIRING PRODUCTS

110 PLUGS

- 110PCC-1** 1-pair
- 110PCC-2** 2-pair
- 110PCC-3** 3-pair
- 110PCC-4** 4-pair



110 IMPACT TOOL

- HT-315DR**
- 5-pair



WALL MOUNT FRAME WITH CABLE TRAY

WM110-300-CT

300-pair



WALL MOUNT FRAME WITHOUT CABLE TRAY

WM110-300-WCT

300-pair



VERTICAL CABLE MANAGER WITH CABLE TRAY

WM110-VCM-CT

300-pair



VERTICAL CABLE MANAGER WITHOUT CABLE TRAY

WM110-VCM

300-pair



RACK MOUNT 110 STYLE WIRE MANAGEMENT PANEL

MP110-WM

19in wire management panel, 1U



110 WIRE MANAGERS

WM-6BR

Manager with legs

WM-6

Manager without legs

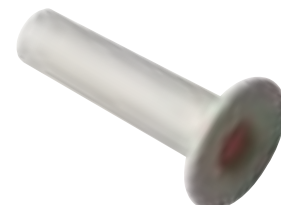


WIRE DISTRIBUTION SPOOL

Cross-connect wire management

WDS

Wire distribution spool



110 WIRING PRODUCTS

110 BLOCKS WITHOUT LEGS

WM110-50	50-pair 110 block
WM110-100	100-pair 110 block
WM110-300	300-pair 110 block



110 BLOCKS WITH LEGS

WM110L50	50-pair 110 block
WM110L100	100-pair 110 block
WM110L300	300-pair 110 block



RACK MOUNT 19IN 110 PANELS

MP110-100	100-pair panel, 1U
MP110-200	200-pair panel, 2U
MP110-300	300-pair panel, 3U



110 CLIPS

110IDC-3P	3-pair 110 clip
110IDC-4P	4-pair 110 clip
110IDC-5P	5-pair 110 clip



110 DESIGNATION HOLDER

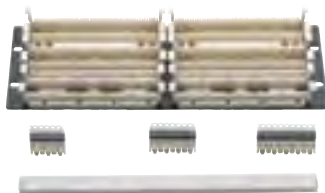
Field designation on 110 block
1110P Holder with white labels



RACK MOUNT 19IN 110 PANEL KITS

Includes 110 clips, holders and accessories

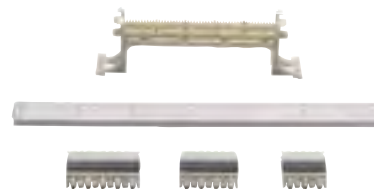
MP110-100K	100-pair panel, 1U
MP110-200K	200-pair panel, 2U
MP110-300K	300-pair panel, 3U



110 KITS

Includes white label strips, label holders, legs, base, C-4 and C-5 connectors.

WM110-50K	50-pair 110 block
WM110-100K	100-pair 110 block
WM110-300K	300-pair 110 block



66 M TO 150 BLOCKS

66 termination field

WM66-50	50-pair M150 66 block
WM66-BC2	Bridging clip, 2 position for 66 block



66 M TO 150 MOUNTING BRACKETS

66 block wall mounting

S89D	89D style mounting bracket
S89B	89B style mounting bracket



INDUSTRIAL/ALL WEATHER PRODUCTS

Shaxon's industrial and all-weather patch cables are designed to protect ethernet connections from liquid and solid contaminants. The threaded plug/jack seal also minimizes the effects of industrial vibration.

CATEGORY 5e INDUSTRIAL SEALED PATCH CABLES

Designed for harsh industrial environments and outdoor use, Shaxon's sealed IA cables feature a threaded boot that provides a water tight seal when used with the IA Jack. Patch cables can be ordered in either an armored or unarmored construction. Replace zz with custom length.

Unarmored, Shielded

C625IS-8zzBK Sealed Category 5e patch cable, 568B, UV and water resistant jacket, gel-filled interior

Armored, Shielded

C625ISC-8zzBK Sealed armored patch cable, 568B, UV and water resistant jacket with copper-clad shielding



CATEGORY 5e ALL-WEATHER STANDARD PATCH CABLES

Designed for harsh industrial environments and outdoor use where the plug/jack interface does not require sealing, Shaxon's IA Cables feature a standard booted or non-booted RJ45 connection. Patch cables can be ordered in either an armored or unarmored construction. Replace zz with custom length.

Unarmored

C625I-8zzBK IA Category 5e patch cable, 568B, UV and water resistant jacket, gel-filled interior

C625I-8zzBK-1B IA Category 5e patch cable, 568B with slide-on boots, UV and water resistant jacket, gel-filled interior

Armored

C625IC-8zzBK Armored IA Category 5e patch cable, 568B UV and water resistant jacket, gel-filled interior



CATEGORY 5e INDUSTRIAL 568A/B JACK KIT

For standard RJ45 patch cables

BM6IA
Category 5e, sealed



CATEGORY 5e INDUSTRIAL SHIELDED COUPLER

For standard RJ45 patch cables

BM6IAIC8
Category 5e RJ45



CATEGORY 5e INDUSTRIAL PLUG KIT

For patch cable assemblies

UL124-IAK
RJ45



CATEGORY 5e INDUSTRIAL JACK COVER

Seal unused ethernet ports

BMJCA
Cover for BM6IA and BM6IAIC8



CATEGORY 5e BULK INDUSTRIAL/ALL WEATHER CABLES

PVC Solid, 24AWG

UV625-8BK-500 4-pair UV-rated, 500ft box, black

UV625-8GY 4-pair UV-rated, 1000ft box, gray



PVC Solid, Gel-Filled (Waterproof) 24AWG

UL625I-8BK 4-pair UV-rated, black

UL625IC-8BK 4-pair UV-rated, armored, black

UL625IA-8BK 4-pair UV-rated, armored, aluminum-shielded, black

SHIPPING POLICY:

FOB point: All orders are shipped FOB origin point unless pre-approved for FOB destination.

Shipping method: Unless specified at time of order, all shipments will be shipped pre-paid via the cheapest method or freight depending on the weight of the shipment.

Shipping Discrepancies: It is the buyer's responsibility to confirm the receipt of all items as indicated on the packing slip. Failure to report shipping discrepancies within ten (10) days of receipt will result in the order not being credited regardless of circumstances.

RMA POLICY:

All returns must have a Return Merchandise Authorization (RMA) number, must be in original condition and must be requested within thirty (30) days from the date of purchase. Any return for any reason other than defects or shipping discrepancies will be charged a fifteen percent (15%) restocking fee. Please note that CUSTOM CABLE ASSEMBLIES/CUSTOM PRODUCTS ARE NON-RETURNABLE AND NON-CANCELABLE.

INVOICE:

Invoice Receipt: In the event that the buyer does not receive any invoice by mail after ten (10) days upon receipt of shipment, the buyer shall request the invoice via registered mail, email or fax within fifteen (15) days of the billing date. Otherwise the invoice will be considered correct, full payment shall be fulfilled.

Terms Invoices: All N30 (Net 30) invoices are due thirty (30) days from shipping. All invoices become delinquent after (30) thirty days from date of shipping. As a condition of the sales agreement, a monthly finance charge of the lesser of one and a half percent (1.5%) per month or the maximum permitted by law will be added to all past due invoices until paid in full. All past due accounts over forty-five (45) days will be placed on hold until the balance is paid in full.

VENUE:

Shaxon Industries, Inc. sustains security interest on the merchandise stated above. Venue shall lie in Orange County, California, and the rights and obligations of the parties hereto shall be enforced in the state of California.

WARRANTY POLICY:

Warranty: Shaxon Industries, Inc. provides a lifetime (of the product) guarantee against defects and labor on all custom and off the shelf cables. Please note that CUSTOM CABLE ASSEMBLIES/CUSTOM PRODUCTS ARE NON-RETURNABLE AND NONCANCELABLE. Before using, buyer shall determine the suitability of the product for their intended use; buyer assumes all risks and liability in connection therewith. This warranty is not inclusive of labor for removal or reinstallation of products, and is void on any product reconfigured, installed improperly or installed in an improper environment, or misused as determined by engineering inspection of Shaxon Industries, Inc.

PAYMENT POLICY:

Shaxon Industries, Inc. accepts Visa, MasterCard, Discover, American Express, Checks and Money Orders. We do not add any credit card surcharges. Open account terms are available to qualifying resellers only - please contact your Account Manager at (800) 345-8295 for additional information.

LIMITATION OF LIABILITY:

IN NO EVENT SHALL SHAXON INDUSTRIES, INC., ITS SUBSIDIARIES OR AFFILIATES OR THEIR RESPECTIVE PARTNERS, OFFICERS, DIRECTORS, EMPLOYEES, SHAREHOLDERS, REPRESENTATIVES OR AGENTS (COLLECTIVELY, "SHAXON INDUSTRIES, INC.") BE LIABLE FOR DIRECT, SPECIAL, INCIDENTAL, CONSEQUENTIAL, PUNITIVE OR INDIRECT DAMAGES (INCLUDING BUT NOT LIMITED TO: LOSS OF DATA, USE OR PROFITS), HOWEVER CAUSED, WHETHER FOR BREACH OF CONTRACT, NEGLIGENCE, OR OTHERWISE, AND WHETHER OR NOT SHAXON INDUSTRIES, INC. HAS BEEN ADVISED OF THE POSSIBILITY OF ANY SUCH DAMAGES; YOU AGREE THAT SHAXON INDUSTRIES, INC., MAXIMUM LIABILITY FOR CERTAIN DAMAGES, SO THE ABOVE MAY NOT APPLY TO YOU TO THE EXTENT SUCH JURISDICTION'S LAW IS APPLICABLE TO THIS AGREEMENT.

Trademarks are the property of their respective owners.

©2017 Shaxon Industries, Inc. All rights reserved. The information in this document is subject to change without notice.