

8K | 12G-SDI 31.5" PRODUCTION MONITOR

Q31-8K

Production / Broadcast monitor for professional camcorder & video camera
Application for video post production & making movies.





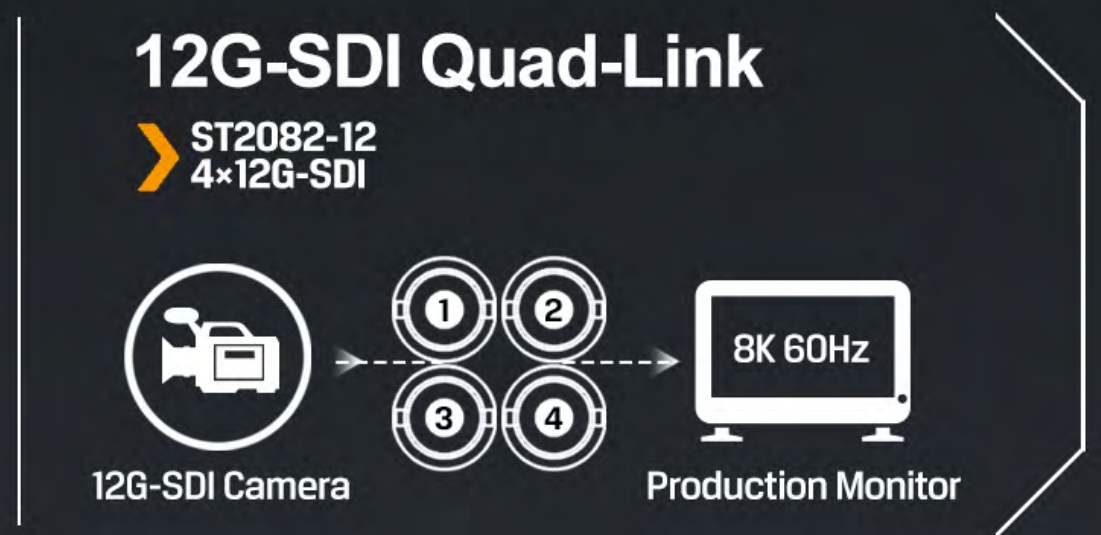
8K 12G-SDI SIGNAL

Combine four 4K 60Hz video signals into one 8K 60Hz video signal using a quad-link 12G-SDI connection.



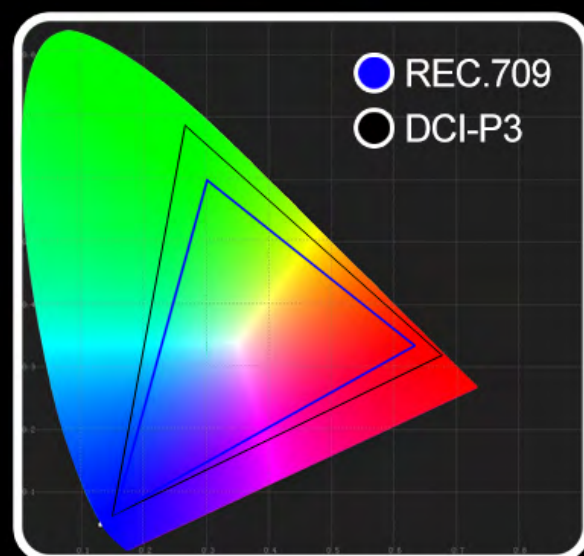
Support Up to 8K 60Hz Video

In addition to the different 4K 60Hz video signals provided by four single-link 12G-SDI, the monitor with four 12G-SDI interfaces is also compliant with the ST2082-12 video protocol standard and can generate video signals up to 8K 60Hz.



Accurate Color Calibration

A specific calibration to reproduce the colors of the image color space.
Color calibration supports the PRO/LTE version of ColourSpace CMS by Light Illusion.

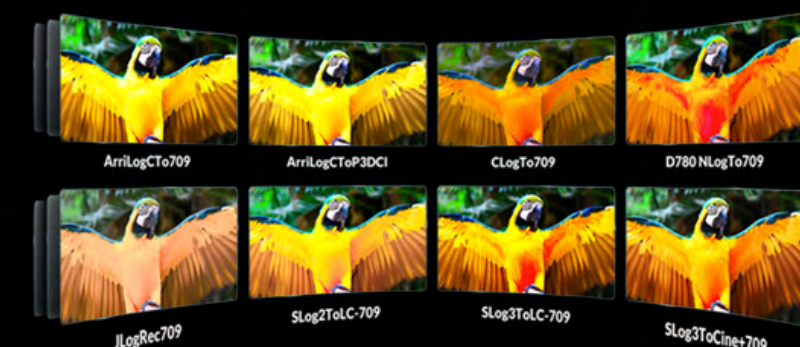


COLOR SPACE
94% DCI-P3 Color Space.



COLOR CALIBRATION

Different calibrated color spaces such as Rec.709, NTSC, DCI-P3 can be selected.



3D LUT

Built-in 3D-LUT, featuring 17 default logs and 6 user logs.

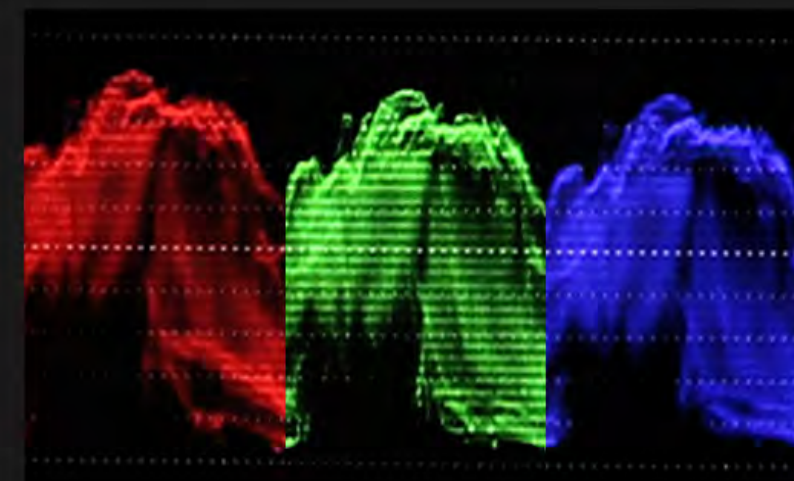


LAN / RS422

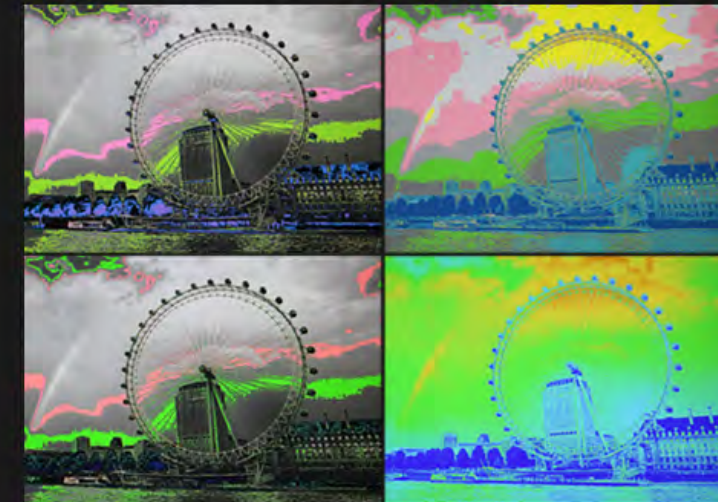
Select an appropriate port from LAN or RS422 to connect to the user's operating interface, allowing the application to identify the monitor before control.

Remote Control Application

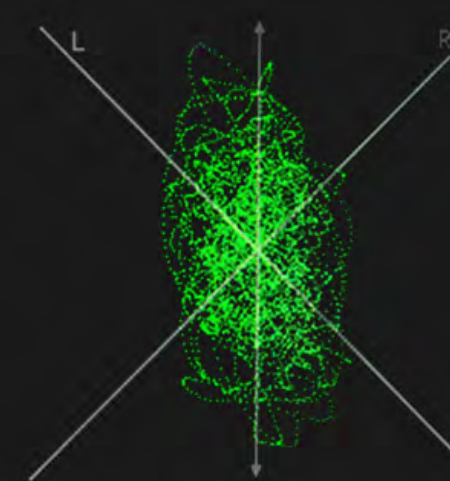
Connect your computer to control the monitor via applications. The interfaces of RS422 In and RS422 Out can realize synchronization control of multiple monitors.



Waveform



False Color



Audio Vector (Lissajous)

- Quad-Split
- Color Temp
- Color Space
- 3D-LUT
- HDR
- Gamma
- UMD
- Time code
- Remote
- Vector scope
- Waveform
- Audio Vector
- Level meter
- Histogram
- Exposure
- Peaking
- False color
- Check field
- Color bar
- Pixel zoom
- Pix to pix
- Marker
- Freeze
- H/V Delay

Quad Split Multiview

In Quad-Split Multiview mode, any input signals can be selected and changed among 12G-SDI, HDMI2.0 and 12G-SFP+. Moreover, images can be differentiated with colorful borders to enhance the senses of monitoring.



When the quad split multiview function is turned on, there are four buttons that will turn into signal switching function, and each button corresponds to one image respectively. The photographer can quickly switch between different input signals through these four buttons.

SINGLE

2SI

SQUARE

HDMI

VESA 75/100MM HOLES

POWER SWITCH

12-24V DC POWER

12G SFP+

**Optical Fiber Module Is Optional

HDMI 2.0 IN/OUT

4×12G-SDI IN/OUT

LAN IN

RS422 IN/OUT

GPI IN

Easy-to-use

F1~F4 user-definable buttons to custom auxiliary functions as shortcut, such as peaking, underscan and checkfield. Use the Dial to select and adjust the value among of sharpness, saturation, tint and volume, etc.

SPECIFICATIONS

DISPLAY	Panel	31.5"
	Physical Resolution	3840×2160
	Aspect Ratio	16:9
	Brightness	350cd/m ²
	Contrast	1300:1
	Viewing Angle	178° / 178°(H/V)
	HDR	ST2084 300/1000/10000/HLG
	Supported Log formats	SLog2 / SLog3 / CLog / NLog / ArriLog / JLog or User...
	Look up table (LUT) support	3D LUT (.cube format)
	Calibration	Calibration to Rec.709 with optional calibration unit
VIDEO INPUT	SDI	4×12G, (Supported 8K-SDI Formats Quad Link)
	SFP	1×12G SFP+(Fiber module for optional)
	HDMI	1×HDMI 2.0
VIDEO LOOP OUTPUT	SDI	4×12G, (Supported 8K-SDI Formats Quad Link)
	HDMI	1×HDMI 2.0
SUPPORTED FORMATS	SDI	4320p 24/25/30/50/60, 2160p 24/25/30/50/60, 1080p 24/25/30/50/60, 1080pSF 24/25/30, 1080i 50/60...
	SFP	2160p 24/25/30/50/60, 1080p 24/25/30/50/60, 1080pSF 24/25/30, 1080i 50/60, 720p 50/60...
	HDMI	2160p 24/25/30/50/60, 1080p 24/25/30/50/60, 1080i 50/60, 720p 50/60...
Audio In/Out (48kHz PCM Audio)	SDI	16ch 48kHz 24-bit
	HDMI	8ch 24-bit
	Ear Jack	3.5mm
REMOTE CONTROL	Built-in Speakers	2
	RS422	In/out
	GPI	1
	LAN	1
POWER	Input Voltage	DC 12-24V
	Power Consumption	≤79W (15V)
	Compatible batteries	V-Lock or Anton Bauer Mount
	Input voltage (battery)	14.8V nominal
ENVIRONMENT	Operating Temperature	0°C~50°C
	Storage Temperature	-20°C~60°C
OTHER	Dimension(LWD)	717.5×461.7×47.4mm
	Weight	13.0kg

Note: Due to constant effort to improve products and product features, specifications may change without notice.

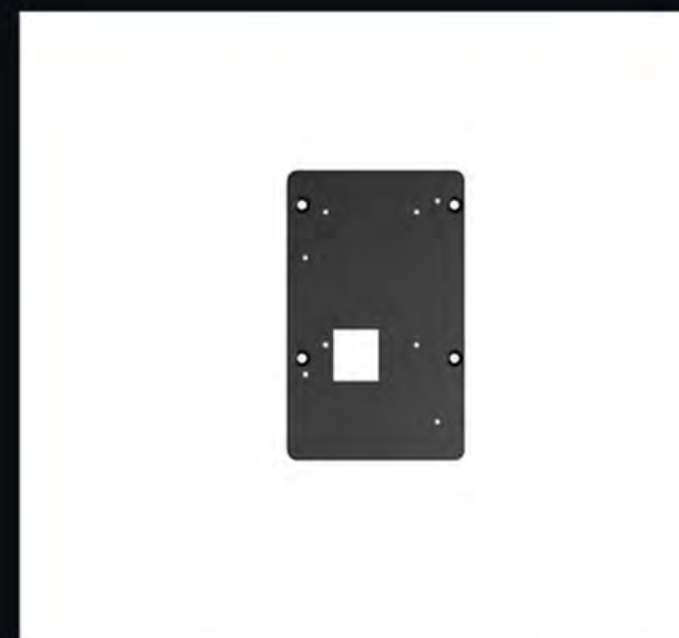


ACCESSORIES

STANDARD



15V DC Adapter



VESA Mount Plate



Battery Plate



Base Bracket



USB Flash Disk

OPTIONAL



SFP Optical Fiber Module