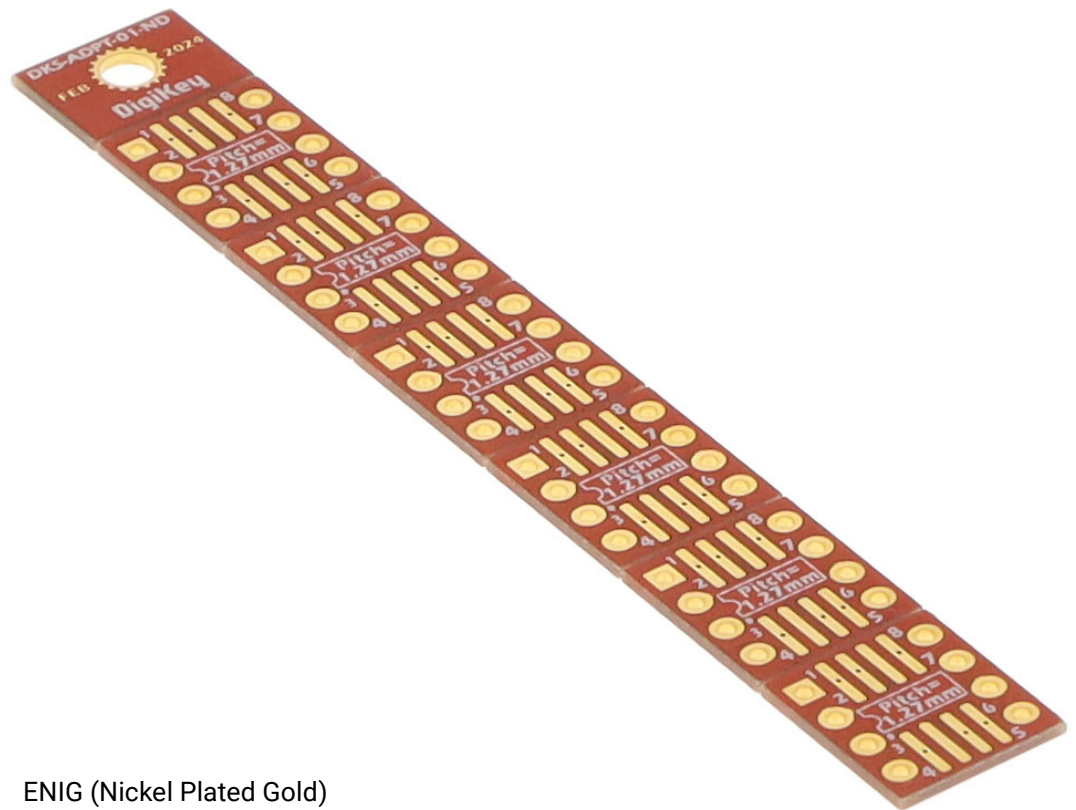


# DKS-ADPT-01-ND

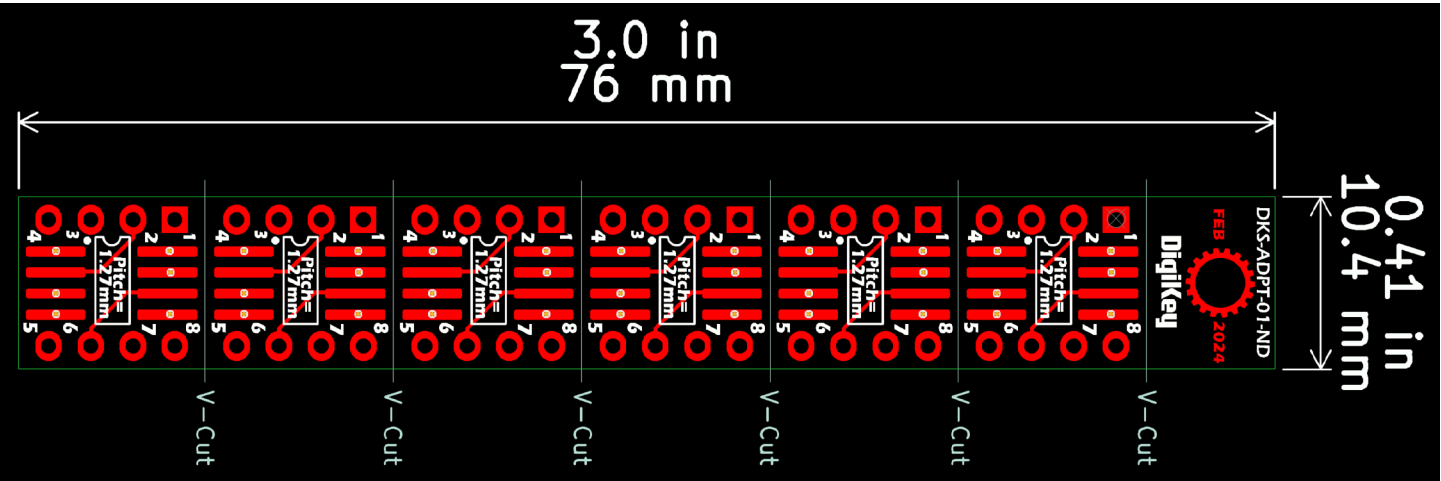
SOIC-8 to DIP-8 SMT ADPT 1=6



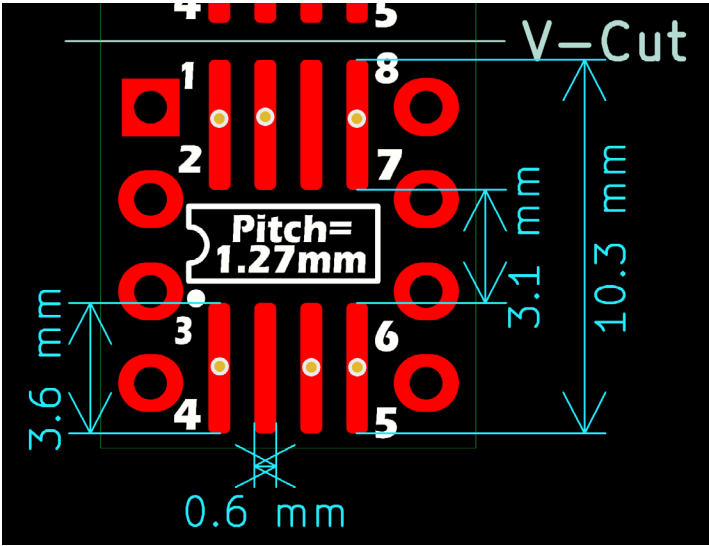
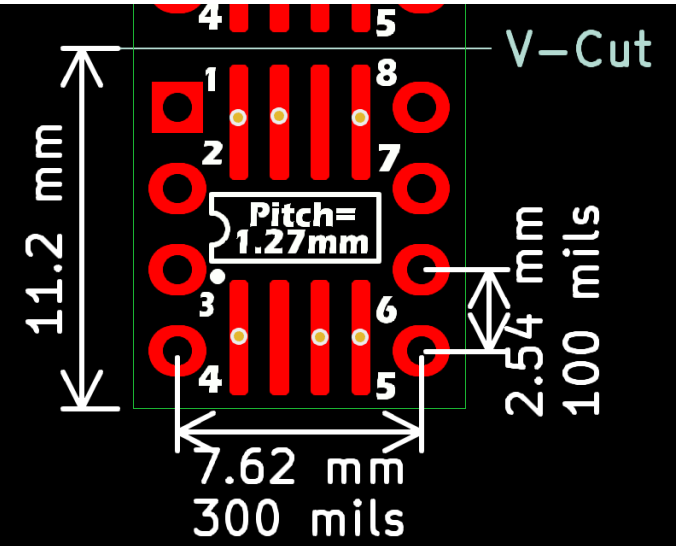
## Specifications:

Plating:	ENIG (Nickel Plated Gold)
Thru Hole Pitch:	0.1" (2.54mm) x 0.3" (7.62mm)
SMT Pitch:	0.05" (1.27mm)
Solder Hole Diameter:	0.035" (0.9mm)
Mounting Hole Diameter:	0.12" (3.0mm)
Size / Dimension:	3.0"L x 0.41"W (76mm x 10.4mm)
Board Thickness:	0.032" (0.8mm)
Material:	FR4 Epoxy Glass

Overall dimensions:

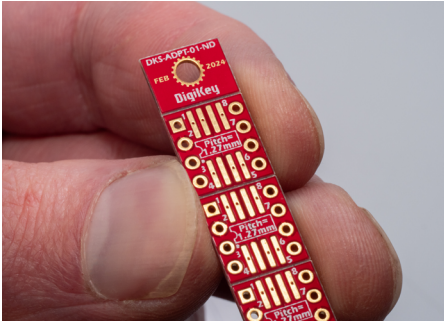


Individual segment dimensions:

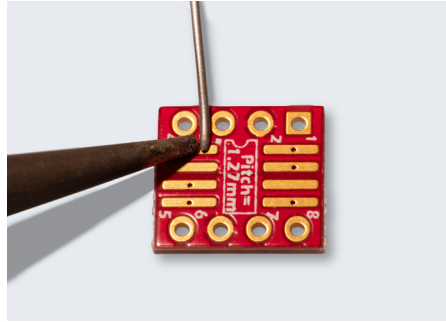


## Recommended way to solder your SMD IC to DIP adapter:

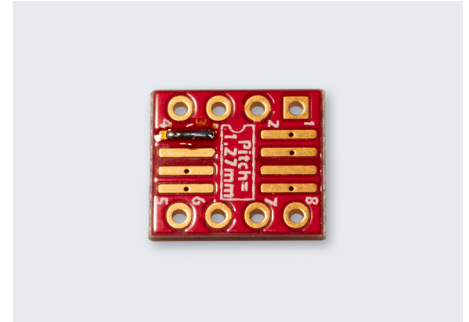
1. "Break me off a piece of that \_\_\_ bar"



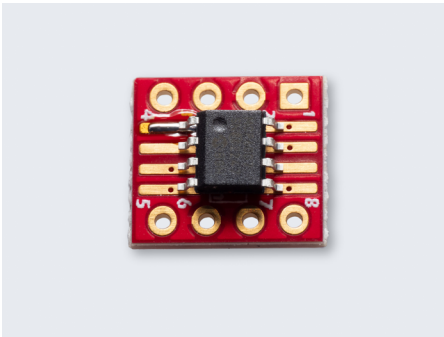
2. Now that you have separated one from the stick, put some solder on pad 1 (see the dot)



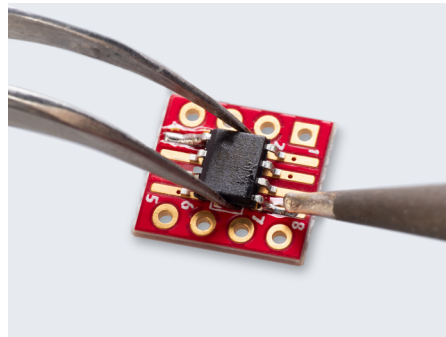
3. Like so...



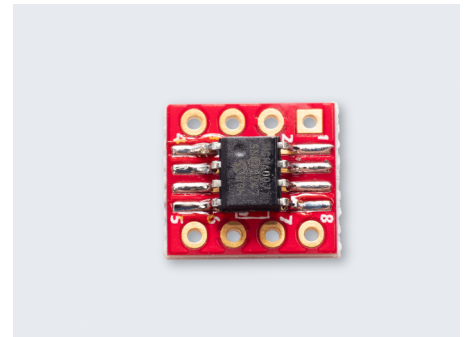
4. Set your IC on top like this...



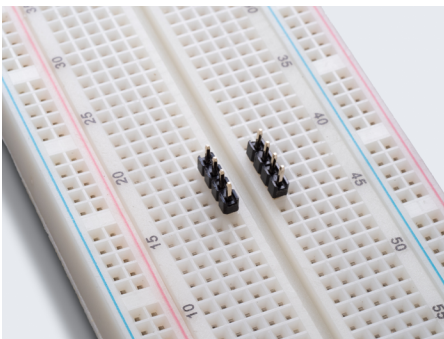
5. To be sure the IC gets flat against the PCB, first add heat to the solder you placed before, then solder the far pin to keep it stable.



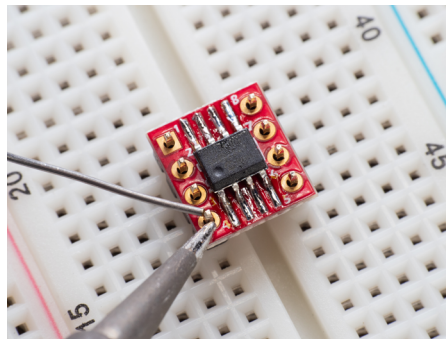
6. Finish soldering each pin.



7. Place your header pins into a breadboard to keep them spaced properly.



8. Solder...



9. Success. Clean off the flux as needed.

