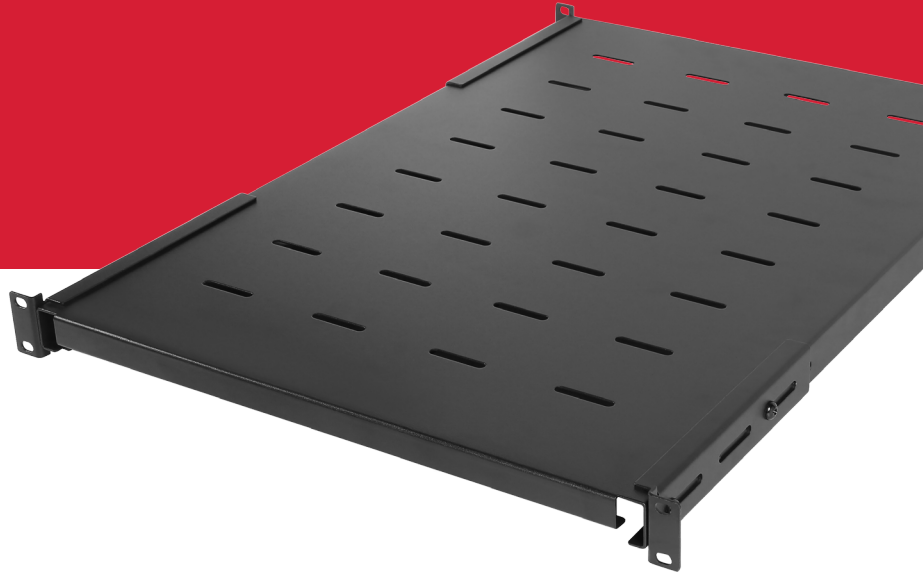




CARBON™ RACK HEAVY DUTY SHELF

CRA50005



Supports monitors and other IT equipment without rack mounts

The CRA50005 is a heavy duty 1U shelf with an adjustable mounting depth from 25.6" to 32.7" that can support up to 175 lbs of equipment without rack mounts. Compatible with models CR42U11001 and CR24U11001. Required mounting hardware is included. The CRA50005 is covered by a 5-year limited warranty.

FEATURES

- Type: Heavy Duty Shelf
- Material: Cold rolled steel
- Height: 1U
- Depth: 25.6" to 32.7"
- Capacity: 175 lbs
- Warranty: 5 years

SPECIFICATIONS

GENERAL

Type Fixed Shelf

PERFORMANCE

Load Capacity - Static (lbs) 175

Load Capacity - Static (kg) 80

PHYSICAL

Rack Height 1U

Installation Hardware Included

Color Black

Material Cold Rolled Steel

Adjustable Mounting Depth (in) 25.6 to 32.7

Adjustable Mounting Depth (mm) 650 to 832

Unit Dimensions - WxHxD (in) 19.09 x 1.69 x 25.59

PHYSICAL - CONT.

Unit Dimensions - WxHxD (mm) 485 x 43 x 650

Weight (lbs) 12.1

Weight (kg) 5.5

Shipping Dimensions - WxHxL (in) 2.4 x 20.3 x 26.4

Shipping Dimensions - WxHxL (mm) 60 x 515 x 670

Shipping Weight (lbs) 13.8

Shipping Weight (kg) 6.3

CERTIFICATIONS

Approvals RoHS

WARRANTY

Product Warranty 5 Years Limited