

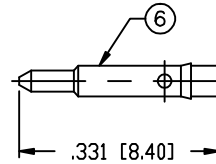
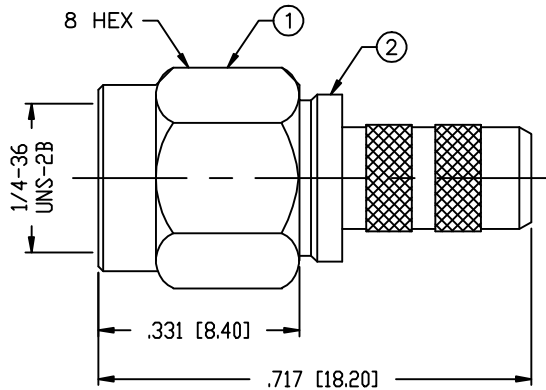
THIS DRAWING CONTAINS INFORMATION PROPRIETARY TO RF INDUSTRIES,  
 ANY UNAUTHORIZED USE OF THIS DRAWING IS EXPRESSLY PROHIBITED  
 WITHOUT WRITTEN PERMISSION FROM RF INDUSTRIES.  
 ANY VIOLATION IS PUNISHABLE UNDER U.S. COPYRIGHT LAWS.

ALL DIMENSIONS ARE REFERENCE ONLY

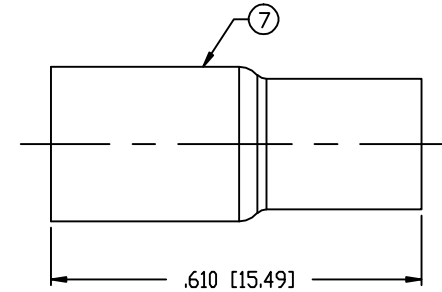
PART NO.

**RSA-3000-C3**

REV	DESCRIPTION	DWN	DATE	APPROVED
-	ENGINEERING RELEASE	CZS	06/16/10	JDMc



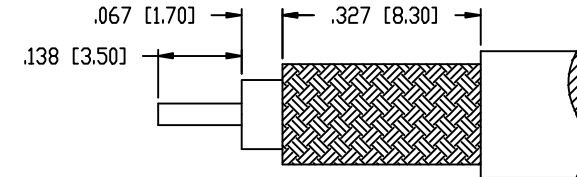
SOLDER PIN



RECOMMENDED CRIMP SIZE: .213

**SPECIFICATIONS:**

IMPEDANCE: 50 Ohms  
 FREQUENCY RANGE: 0-12.4 GHz  
 VSWR: 1.3 Max.  
 INSERTION LOSS (dB):  $0.03 \times \sqrt{f(\text{GHz})}$  Max.  
 INSULATION RESISTANCE: 5000 Megohms Minimum  
 TEMPERATURE RANGE: -65°C TO 165°C  
 FOR RG-58/U PLENUM, RG-122/U; ALPHA 9859,  
 9158S; BELDEN 82240, 82907, 88240 & 89907



RECOMMENDED STRIPPING DIM'S

1	SHELL	1	BRASS	NICKEL, 100μ"	008974	
2	BODY	1	BRASS	NICKEL, 100μ"		
3	INSULATOR	1	PTFE	---		
4	RETAINING RING	1	Be.Cu.	---		
5	GASKET	1	SILICONE	---		
6	PIN	1	BRASS	GOLD, 50μ"		
7	FERRULE (FER-112)	1	BRASS	NICKEL, 100μ"		
8						
9						
10						
11						
12						
13						
14						
#	DESCRIPTION	QTY	MATERIAL	FINISH	APPROVALS	DATE

DRAWN  
C. ZUNIGA 06/16/10  
 CHECKED  
 ORJ DRAWN  
C. ZUNIGA 06/16/10

RoHS compliant

DIMENSIONS ARE IN INCHES  
 AND [MILLIMETERS]  
 UNLESS OTHERWISE NOTED  
 TOLERANCES ARE:

DECIMALS	DIAMETER
.xxx±.003 [.08]	.xxx±.001 [.03]
.xx±.005 [.13]	.xx±.003 [.08]

**RFconnectors**  
 DIVISION OF RF INDUSTRIES, LTD.

7610 MIRAMAR RD  
 SAN DIEGO, CA 92126  
 (858) 549-6340  
 (858) 549-6345 FAX

**SMA PLUG, CRIMP**

SIZE	CABLE GROUP	DWG NO.	REV
A	C3/M	RSA-3000-C3	-
SCALE: NTS		CAD FILE OUTLINE	SHEET 1 OF 1