



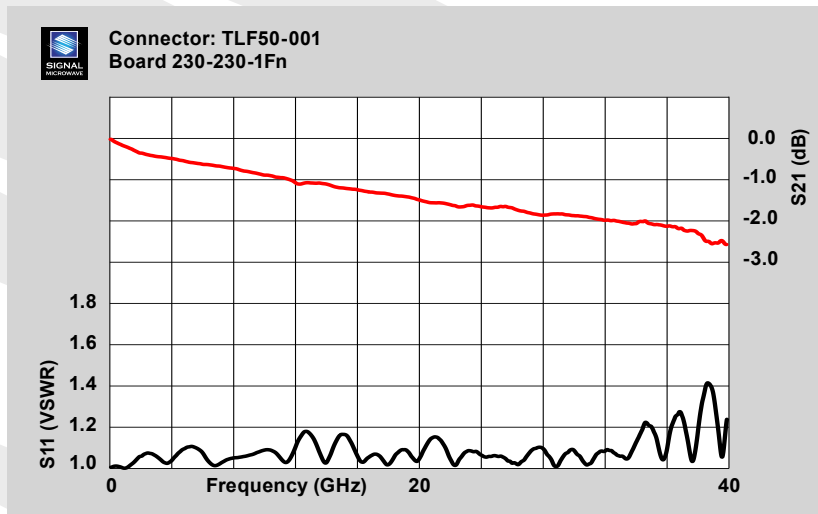
TLF50-001

Signal Microwave TLF50

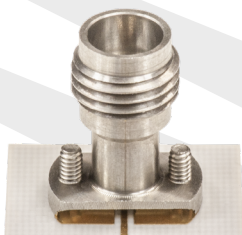
50 GHz Top Launch Connectors

Edge Launch Type Performance Anywhere on the Board

- 2.40 mm Interface
- Top RF launch to 50 GHz
- Compression Contact
- No Soldering Required
- Transitions to a microstrip or grounded coplanar line on the top layer of the board
- Signal does not need to travel through the board vias



Typical data for 2 connectors tested on a GCPW test board.



Signal Microwave, LLC
 Tempe, Arizona
info@signalmicrowave.com
www.signalmicrowave.com
 (480) 322-4992

