

# Type C and Universal Adapter



## About Delta

Delta, founded in 1971, is a global provider of power and thermal management solutions. Its mission statement, "To provide innovative, clean and energy-efficient solutions for a better tomorrow," focuses on addressing key environmental issues such as global climate change. As an energy-saving solutions provider with core competencies in power electronics and automation, Delta's business categories include Power Electronics, Automation, and Infrastructure.

Delta offers some of the most energy efficient power products in the industry, including switching power supplies with efficiency over 90%, telecom power with up to 98%, and PV inverters with up to 99.2% efficiency. We have also developed the world's first server power supply certified as 80 Plus Titanium.

In response to the challenge of climate change, Delta will remain committed to the research and development of innovative, energy-saving products, solutions and services that contributing substantially to the sustainable development of mankind.

## Business Categories

### Power Electronics

- Components
- Power and Systems
- Fan & Thermal Management
- Automotive Electronics
- **Innervie**

### Automation

- Industrial Automation
- Building Automation

### Infrastructure

- ICT Infrastructure
- Energy Infrastructure & Industrial Solutions
- **vivitek**  
VIVO COLOR VIVO LIFE

## About Power and System Business Group (PSBG)

- World's leading provider of power products and solutions
- First power product launched in 1983



**P**ower Conversion



**S**mart Drive & Control



**B**attery Charger



**G**reen Energy

## Empowering a Smarter, Greener Future

PSBG offers cutting-edge power products and systems that support innovative solutions in cloud computing, network connectivity, client devices, industrial and medical industry, lighting, and appliances and e-mobility for global customers.



# Trusted Adapter Provider for Superior Performance

Delta is the leading global producer of power supplies. We have pursued the mission: "To provide innovative, clean and energy-efficient solutions for a better tomorrow" for decades. Delta provides total power management solutions for notebook, communication and other external power source applications. Delta Group produces over 200M pieces per year with about a 45% global market share. Our products are provided for the world's best-known brands. We strive to design environmentally friendly products, and we research and develop high-efficiency, very compact and low profile AC adapters. All models are fully RoHS, REACH and WEEE recycling compliant.



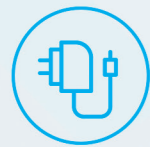
## High Efficiency Performance

- Meets ErP Lot 7 & DOE Level VI



## High Touch Noise Reduction

- Built-in smart shunt mechanism reduces devices' touch panel response latency issue caused by higher voltages than required



## Reliable Product Development

- Ensures performance stability at room temperature/high temperature/low temperature
- More than 30 years of sophisticated product design and manufacturing experience



## Compact Design

- Our product features a compact design that provides enhanced portability and convenience for our customers






## Worldwide Safety Certification


- Meets IEC / UL / EN 62368-1

## Product Overview

### Type C Series

Form Factor	Model Name	Output Power	Output Voltage (±5%)	Dimensions (mm)	Output Connector
 Wall Mount	ADP-30NW	30 W	5 V / 9 V / 12 V / 15 V / 20 V	50 x 50 x 28.5	Type C
	ADP-45EW	45 W	5 V / 9 V / 15 V / 20 V	53 x 53 x 28.5	
	ADP-65JW	65 W		63 x 63 x 28.5	
 Socket	ADP-45HG B	45 W	5 V / 9 V / 12 V / 15 V / 20 V	92 x 45.5 x 26.3	
	ADP-65KE B	65 W		90 x 51 x 28.5	
	ADP-100XB B	100 W		108 x 56 x 26.5	
	ADP-140AB B	140 W	5 V / 9 V / 15 V / 20 V / 28 V	80 x 80 x 29.2	
	ADP-240KB B	240 W	5 V / 9 V / 15 V / 20 V / 28 V / 36 V / 48 V	162 x 72 x 23	
 Changeable Inlet	ADP-65TW A	65 W	5 V / 9 V / 15 V / 20 V	30.4 x 30.4 x 60	

### Universal Series

Form Factor	Model Name	Output Power	Output Voltage (±5%)	Dimensions (mm)	Output Connector (mm)
 Socket	ADP-36PH B	36 W	12 V	89.5 x 37 x 26.5	Ø5.5
	ADP-60KD B	60 W		120.0 x 52.5 x 32.5	
	ADP-90KE B	90 W		108 x 56 x 26.5	
	ADP-120YH B	120 W		138 x 65.5 x 28.5	
	ADP-45FE F	45 W	19.5 V	94 x 39 x 26.5	Ø5.5
	ADP-65DE B	65 W		108 x 46 x 29.5	Ø3.0
	ADP-90WH K	90 W		126 x 51 x 30	Ø5.5
	ADP-180TB F	180 W		152 x 72.5 x 25.4	
	ADP-230JB D	230 W		157 x 85 x 25.4	
	ADP-330CB B	330 W	200 x 100 x 43	Ø5.5	
	ADP-120VH D	120 W	20 V		138 x 68.5 x 24.5
	ADP-120XH B	120 W	24 V		138 x 68.5 x 24.5
	ADP-150EH B	150 W			160 x 76.2 x 25.6
	ADP-180WB B	180 W	148 x 75.5 x 25.4	Ø6.5	

## Index

· Type C adapter .....	6
· Universal adapter .....	13

## Type C wall mount adapter

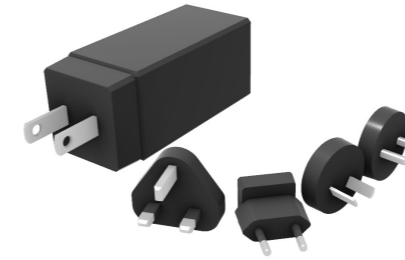


- Wide compatibility
- High immunity to touch noise
- Compliance with CoC TIER2 for high quality
- Supports 2 times peak load



Category	Item	ADP- 30NW
AC Port	Type	US / EU / UK
Output Dimensions	L x W x H (mm)	50 x 50 x 28.5
	Operating Temperature	0 - 35 °C
	Weight	74 g ±2.5%
	Output Connector	1 type C connector
	Efficiency Standard	DOE Level VI CoC TIER2
Input	Input Voltage Range	90 - 264 V
	Average Efficiency	5V ≥ 81.84% 9V ≥ 87.30% 12V ≥ 87.69% 15V ≥ 87.69% 20V ≥ 87.69%
	No Load Power Consumption	<0.075 W
	Output Power	30 W
Output	Output Voltage ( ±5% )	5 V / 9 V / 12 V / 15 V / 20 V
	Output Current (max.)	3 A @ 5 V / 9 V 2.5 A @12 V 2 A @15 V 1.5 A @20 V
	Ripple and Noise	<300 mV
	Peak Load	>17.8 V @150%,load ,2 ms >17.8 V @200%,load ,1 ms
	Cap Life	>13140 hrs @25 °C,100 V <sub>AC</sub>
Performance	Case Temperature Rise	<45 °C @35 °C,100 V <sub>AC</sub>
	Acoustic Noise (keep 10 cm)	<30 dB
Safety	Leakage Current (@240 V <sub>AC</sub> )	<100 uA
	Protection Type (OCP/OVP/SCP)	OCP/SCP : Auto-Recovery OVP : Latch-off
	Standard	IEC/UL/EN 62368-1

## Type C Changeable Inlet adapter



- Wide compatibility
- High immunity to touch noise
- Excellent leakage current performance
- Compliance with CoC TIER2 for high quality
- Supports 2 times peak load
- Travel kit with changeable duckhead

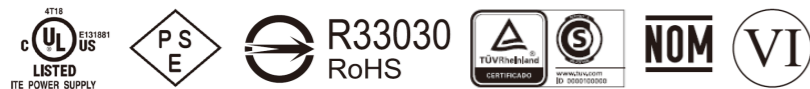


Category	Item	ADP-65TW A
AC Port	Type	US / EU / UK / AU / IN
Output Dimensions	L x W x H (mm)	30.4 x 30.4 x 60
	Operating Temperature	0 - 35 °C
	Weight	210 g ±2.5%
	Output Connector	1 type C connector
	Efficiency Standard	DOE Level VI CoC TIER2
Input	Input Voltage Range	90 - 264 V
	Average Efficiency	5V ≥ 81.84% 9V ≥ 87.30% 15V ≥ 88.85% 20V ≥ 89.00%
	No Load Power Consumption	<0.15 W
	Output Power	65 W
Output	Output Voltage ( ±5% )	5 V / 9 V / 15 V / 20 V
	Output Current (max.)	3 A @ 5 V / 9 V / 15 V 3.25 A @20 V
	Ripple and Noise	<370 mV
	Peak Load	>17.8 V @200%,load ,0.5 ms >17.8 V @225%,load ,250 us
	Cap Life	>13140 hrs @25 °C,100 V <sub>AC</sub>
Performance	Case Temperature Rise	<45 °C @25 °C,100 V <sub>AC</sub>
	Acoustic Noise (keep 10 cm)	<25 dB
Safety	Leakage Current (@240 V <sub>AC</sub> )	<50 uA
	Protection Type (OCP/OVP/SCP)	Latch-off
	Standard	IEC/UL/EN 62368-1

## Type C wall mount adapter



- Wide compatibility
- High immunity to touch noise
- Excellent leakage current performance
- Compliance with CoC TIER2 for high quality
- Supports 2 times peak load



Category	Item	ADP-45EW Y	ADP-65JW Y
AC Port	Type	US	
Output Dimensions	L x W x H (mm)	53 x 53 x 28.5	63 x 63 x 28.5
General	Captive DC Cable Length (m)	1.5	2
	Operating Temperature	0 - 35 °C	0 - 40 °C
	Weight	170 g ±5 g	210 g ±2.5%
	Output Connector	Type C	
	Efficiency Standard	DOE Level VI CoC TIER2	
Input	Input Voltage Range	90 - 264 V	
	Average Efficiency	5V ≥ 81.84% 9V ≥ 87.30% 15V ≥ 88.85% 20V ≥ 88.85%	5V ≥ 81.84% 9V ≥ 87.30% 15V ≥ 88.85% 20V ≥ 89.00%
	No Load Power Consumption	<0.075 W	<0.15 W
	Output Power	45 W	65 W
Output	Output Voltage ( ±5% )	5 V / 9 V / 15 V / 20 V	
	Output Current (max.)	3 A @5 V / 9 V / 15 V 2.25 A @20 V	3 A @5 V / 9 V / 15 V 3.25 A @20 V
	Ripple and Noise	<300 mV	
	Peak Load	>17.8 V @200% load,2 ms	
	Cap Life	>13140 hrs @25 °C,100 V <sub>AC</sub>	
Performance	Case Temperature Rise	<40 °C @40 °C,100 V <sub>AC</sub>	
	Acoustic Noise (keep 10 cm)	<25 dB	
	Leakage Current (@240 V <sub>AC</sub> )	<20 uA	
Safety	Protection Type (OCP/OVP/SCP)	Latch-off	
	Standard	IEC/UL/EN 62368-1	

## Type C wall mount adapter



- Wide compatibility
- High immunity to touch noise
- Excellent leakage current performance
- Compliance with CoC TIER2 for high quality
- Supports 2 times peak load



Category	Item	ADP-45EW Z	ADP-65JW Z
AC Port	Type	EU	
Output Dimensions	L x W x H (mm)	53 x 53 x 28.5	63 x 63 x 28.5
General	Captive DC Cable Length (m)	1.8	2
	Operating Temperature	0 - 35 °C	0 - 40 °C
	Weight	180 g ±5%	223 g ±2.5%
	Output Connector	Type C	
	Efficiency Standard	DOE Level VI CoC TIER2	
Input	Input Voltage Range	90 - 264 V	
	Average Efficiency	5V ≥ 81.84% 9V ≥ 87.30% 15V ≥ 88.85% 20V ≥ 88.85%	5V ≥ 81.84% 9V ≥ 87.30% 15V ≥ 88.85% 20V ≥ 89.00%
	No Load Power Consumption	<0.075 W	<0.15 W
	Output Power	45 W	65 W
Output	Output Voltage ( ±5% )	5 V / 9 V / 15 V / 20 V	
	Output Current (max.)	3 A @5 V / 9 V / 15 V 2.25 A @20 V	3 A @5 V / 9 V / 15 V 3.25 A @20 V
	Ripple and Noise	<300 mV	
	Peak Load	>17.8 V @200% load,2 ms	
	Cap Life	>13140 hrs @25 °C,100 V <sub>AC</sub>	
Performance	Case Temperature Rise	<40 °C @40 °C,100 V <sub>AC</sub>	
	Acoustic Noise (keep 10 cm)	<25 dB	
	Leakage Current (@240 V <sub>AC</sub> )	<20 uA	
Safety	Protection Type (OCP/OVP/SCP)	Latch-off	
	Standard	IEC/UL/EN 62368-1	

# Type C socket adapter



- Wide compatibility
- High immunity to touch noise
- Excellent leakage current performance



Category	Item	ADP-45HG B	ADP-65KE B
AC Port	Type	C6	
Output Dimensions	L x W x H (mm)	92 x 45.5 x 26.3	90 x 51 x 28.5
General	Captive DC Cable Length (m)	1.5	
	Operating Temperature	0 - 35 °C	
	Weight	170 g ±5%	210 g±5%
	Output Connector	Type C	
	Efficiency Standard	DOE Level VI CoC TIER2	
Input	Input Voltage Range	90 - 264 V	
	Average Efficiency	5V ≥ 81.84% 9V ≥ 87.30% 12V ≥ 88.30% 15V ≥ 88.85% 20V ≥ 88.85%	5V ≥ 81.84% 9V ≥ 87.30% 12V ≥ 88.30% 15V ≥ 88.85% 20V ≥ 89.00%
	No Load Power Consumption	<0.075 W	<0.15 W
	Output Power	45 W	65 W
	Output Voltage ( ±5% )	5 V / 9 V / 12 V / 15 V / 20 V	
Output	Output Current (max.)	3 A@ 5 V / 9 V / 12 V / 15 V 2.25 A@20V	3 A@ 5 V / 9 V / 12 V / 15 V 3.25 A@20V
	Ripple and Noise	<300mV	
	Peak Load	>17 V @180% load,2 ms	
	Cap Life	>8,760 hrs @25 °C,115 V <sub>AC</sub>	
	Case Temperature Rise	TOP <45°C @25°C,100 V <sub>AC</sub> / BOT <50°C@25°C, 100 V <sub>AC</sub>	
Performance	Acoustic Noise (keep 10 cm)	<25 dB	<30 dB
	Leakage Current (@240 V <sub>AC</sub> )	<50 uA	
	Protection Type (OCP/OVP/SCP)	Latch-off	
Safety	Standard	IEC / UL / EN 62368-1	

# Type C socket adapter



- Wide compatibility
- High immunity to touch noise
- Excellent leakage current performance



Category	Item	ADP-100XB B	ADP-140AB B
AC Port	Type	C6	
Output Dimensions	L x W x H (mm)	108 x 56 x 26.5	80 x 80 x 29.2
General	Captive DC Cable Length (m)	1.5	1.6
	Operating Temperature	0 - 35 °C	
	Weight	260 g ±5%	345 g ±2.5%
	Output Connector	Type C	
	Efficiency Standard	DOE Level VI CoC TIER2	
Input	Input Voltage Range	90 - 264 V	
	Average Efficiency	5V ≥ 82.39% 9V ≥ 87.62% 12V ≥ 88.40% 15V ≥ 88.85% 20V ≥ 89.00%	5V ≥ 82.39% 9V ≥ 87.62% 15V ≥ 89.00% 20V ≥ 89.00% 28V ≥ 89.00%
	No Load Power Consumption	<0.15 W	
	Output Power	100 W	140 W
	Output Voltage ( ±5% )	5 V / 9 V / 12 V / 15 V / 20 V	5 V / 9 V / 15 V / 20 V / 28 V
Output	Output Current (max.)	3 A@ 5 V / 9 V / 12 V / 15 V 5 A@20V	3 A@ 5 V / 9 V 5 A@ 15 V / 20 V / 28 V
	Ripple and Noise	<350mV	<380mV
	Peak Load	>17 V @180% load,2 ms	20V: >18V@200% load, 1ms (with 100uF) 28V: >25.2V@200% load, 1ms (with 100uF)
	Cap Life	>8760 hrs @25 °C,115 V <sub>AC</sub>	>26280 hrs @25 °C,100 V <sub>AC</sub>
	Case Temperature Rise	TOP <45°C @25°C,100 V <sub>AC</sub> BOT <50°C@25°C, 100 V <sub>AC</sub>	TOP <50 °C @25 °C,100 V <sub>AC</sub> BOT <55 °C @25 °C,100 V <sub>AC</sub>
Performance	Acoustic Noise (keep 10 cm)	<25 dB	
	Leakage Current (@240 V <sub>AC</sub> )	<50 uA	<100 uA
	Protection Type (OCP/OVP/SCP)	Latch-off	
Safety	Standard	IEC / UL / EN 62368-1	

New

## Type C socket adapter



- Wide compatibility
- High immunity to touch noise
- Excellent leakage current performance



Category	Item	ADP-240KB B
AC Port	Type	C6
Output Dimensions	L x W x H (mm)	162 x 72 x 23
	DC Cable Length (m)	1.8
General	Operating Temperature	0 - 35 °C
	Weight	560g ±10%
	Efficiency Standard	DOE Level VI
Input	Input Voltage Range	90 - 264 V
	Average Efficiency	5V ≥ 81.39% 9V ≥ 86.62% 15V ≥ 87.73% 20V, 28V, 36V, 48V ≥ 88%
	No Load Power Consumption	<0.2 W
	Output Power	240 W
Output	Output Voltage ( ±5% )	5 V / 9 V / 15 V / 20 V / 28 V / 36 V / 48 V
	Output Current (max.)	3 A @ 5 V / 9 V / 15 V 5 A @ 20 V / 28 V / 36 V / 48 V
	Ripple and Noise	<600 mV
	Peak Load	48 V: >43.4 V @150% load, 1 ms @125% load, 2 ms @110% load ,10 ms
	Cap Life	>8760 hrs @25 °C, 115 V <sub>AC</sub>
Performance	Case Temperature Rise	TOP <60 °C @35 °C, 90 V <sub>AC</sub> TOP <60 °C @35 °C, 90 V <sub>AC</sub>
	Acoustic Noise (keep 10 cm)	<25 dB
Safety	Leakage Current (@240 V <sub>AC</sub> )	<50 uA
	Protection Type (OCP/OVP/SCP)	Latch-off
	Standard	IEC/UL/EN 62368-1

## Universal adapter



- Wide compatibility
- High immunity to touch noise



Category	Item	ADP-36PH B	ADP-60KD B
AC Port	Type	C6	C14
Output Dimensions	L x W x H (mm)	89.5 x 37 x 26.5	120.0 x 52.5 x 32.5
General	Captive DC Cable Length (m)	1.5	
	Operating Temperature	0 - 40 °C	
	Weight	153 g±10%	240 g±10%
	Output Connector	φ5.5	
Input	Input Voltage Range	90 - 264 V	
	Average Efficiency	>87.4%	>88%
	No Load Power Consumption	<0.1 W	<0.15 W
	Output Power	36 W	60 W
Output	Output Voltage ( ±5% )	12 V	
	Output Current (max.)	3 A	5 A
	Ripple and Noise	<450 mV	<380 mV
	Cap Life	>43,800 hrs @ 25 °C, 100 V <sub>AC</sub>	>30,000 hrs @ 25 °C, 100 V <sub>AC</sub>
Performance	Case Temperature Rise	<45 °C @40 °C, 100 V <sub>AC</sub>	
	Acoustic Noise (keep 10 cm)	<25 dB	
Safety	Leakage Current (@240 V <sub>AC</sub> )	<100 uA	
	Protection Type (OCP/OVP/SCP)	OCP / SCP : Auto-Recovery OVP : Latch-off	Latch-off
	Standard	IEC / UL / EN 62368-1	

# Universal adapter



- Wide compatibility
- High immunity to touch noise



Category	Item	ADP-90KE B	ADP-120YH B
AC Port	Type	C6	
Output Dimensions	L x W x H (mm)	138 x 68.5 x 25.4	160 x 76.2 x 25.6
General	Captive DC Cable Length (m)	1.2	
	Operating Temperature	0 - 40 °C	
	Weight	340 g±10%	430 g±10%
	Output Connector	φ5.5	φ7.4
	Efficiency Standard	DOE Level VI CoC TIER2	
Input	Input Voltage Range	90 - 264 V	
	Average Efficiency	>89%	
	No Load Power Consumption	<0.15 W	
Output	Output Power	90 W	120 W
	Output Voltage ( ±5% )	12 V	
	Output Current (max.)	7.5 A	10 A
	Ripple and Noise	<240 mV	
Performance	Cap Life	>43,800 hrs @ 25 °C, 100 V <sub>AC</sub> , 50% load	
	Case Temperature Rise	<45 °C @40°C,100 V <sub>AC</sub>	
	Acoustic Noise (keep 10 cm)	<30 dB	
Safety	Leakage Current (@240 V <sub>AC</sub> )	<250 uA	
	Protection Type (OCP/OVP/SCP)	Latch-off	
	Standard	IEC/UL/EN 62368-1	

# Universal adapter



- Wide compatibility
- High immunity to touch noise



Category	Item	ADP-120XH B	ADP-150EH B	ADP-180WB B
AC Port	Type	C6		
Output Dimensions	L x W x H (mm)	138× 68.5 x 24.5	160× 76.2 x 25.6	148× 75.5 x 25.4
General	Captive DC Cable Length (m)	1.8		
	Operating Temperature	0 - 40 °C		
	Weight	330 g ±10%	378 g ±10%	514 g ±10%
	Output Connector	φ5.5		φ6.5
	Efficiency Standard	DOE Level VI CoC TIER2		
Input	Input Voltage Range	90 - 264 V		
	Average Efficiency	>89%		
	No Load Power Consumption	<0.15 W		
Output	Output Power	120 W	150 W	180 W
	Output Voltage ( ±5% )	24 V		
	Output Current (max.)	5 A	6.25 A	7.5 A
	Ripple and Noise	<430 mV		<380 mV
Performance	Cap Life	>43,800 hrs @ 25 °C, 100 V <sub>AC</sub> , 50% load		
	Case Temperature Rise	<45 °C @40 °C,100 V <sub>AC</sub>		
	Acoustic Noise (keep 10 cm)	<25 dB		<30 dB
Safety	Leakage Current (@240 V <sub>AC</sub> )	<250 uA		
	Protection Type (OCP/OVP/SCP)	Latch-off		
	Standard	IEC/UL/EN 62368-1		



# Universal adapter



- Wide compatibility
- High immunity to touch noise



Category	Item	ADP-45FE F	ADP-65DE B	ADP-90WH K	ADP-120VH D
AC Port	Type	C6			
Output Dimensions	L x W x H (mm)	94 x 39 x 26.5	108 x 46 x 29.5	126 x 51 x 30	138 x 68.5 x 24.5
General	Captive DC Cable Length (m)	1.5			1.8m
	Operating Temperature	0 - 35 °C			0 - 40 °C
	Weight	142 g ±10%	165 g ±10%	235 g ±10%	330 g ±10%
	Output Connector	Φ5.5	Φ3.0	Φ5.5	
	Efficiency Standard	DOE Level VI CoC TIER2		DOE Level VI	DOE Level VI CoC TIER2
Input	Input Voltage Range	90 - 264 V			
	Average Efficiency	>88.85%	>89%	>88% @115 V <sub>AC</sub> >89% @230 V <sub>AC</sub>	>89%
	No Load Power Consumption	<0.075W	<0.15 W	<0.21 W	<0.15 W
	Output Power	45 W	65 W	90 W	120 W
Output	Output Voltage ( ±5% )	19.5 V			20 V
	Output Current (max.)	2.37 A	3.42 A	4.62 A	6 A
	Ripple and Noise	<380 mV			<350 mV
	Peak Load	>17V @3.56 A load, 2 ms	>17 V @5.13 A load, 2 ms	>15 V @7.5 A load, 10 ms	>18.5 V @120% load, 1 ms
	Cap Life	>8,760 hrs @ 25 °C, 115 V <sub>AC</sub>		>13,140 hrs @ 25 °C, 100 V <sub>AC</sub>	>26,280 hrs @ 25 °C, 100 V <sub>AC</sub>
Performance	Case Temperature Rise	TOP <45 °C @25 °C,100 V <sub>AC</sub> BOT <50 °C @25 °C,100 V <sub>AC</sub>		<45 °C @35 °C, 100 V <sub>AC</sub>	TOP <45 °C @25 °C,100 V <sub>AC</sub> BOT <50 °C @25 °C,100 V <sub>AC</sub>
	Acoustic Noise (keep 10 cm)	<25 dB			<30 dB
	Leakage Current (@240 V <sub>AC</sub> )	<50 uA		<40 A	<100 uA
Safety	Protection Type (OCP/OVP/SCP)	Latch-off			
	Standard	IEC/UL/EN 62368-1			

# Universal adapter

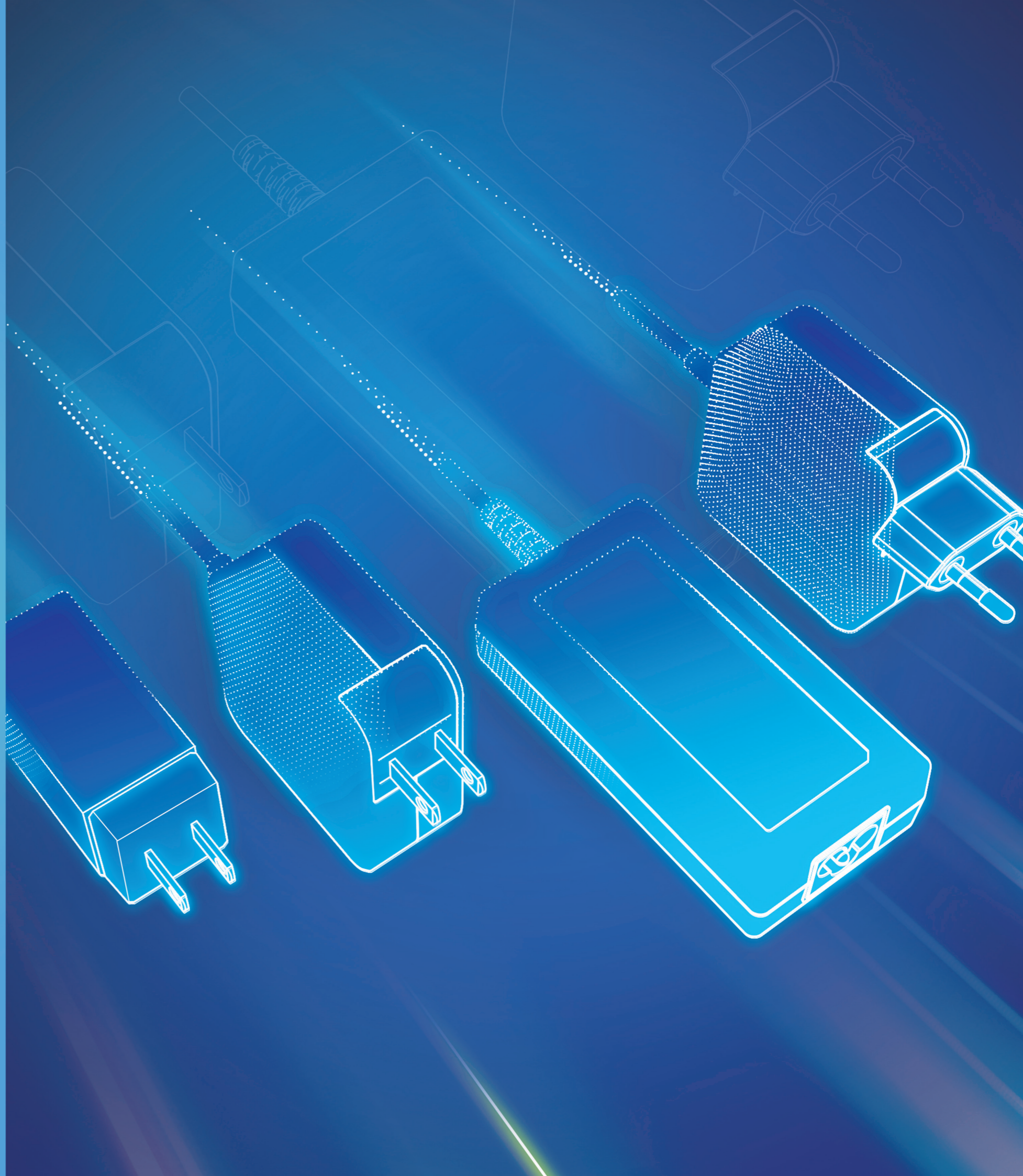


- Wide compatibility
- High immunity to touch noise



Category	Item	ADP-180TB F	ADP-230JB D	ADP-330CB B
AC Port	Type	C6	C14	
Output Dimensions	L x W x H (mm)	152 x 72.5 x 25.4	157 x 85 x 25.4	200 x 100 x 43.0
General	Captive DC Cable Length (m)	1.8		
	Operating Temperature	0 - 35 °C	0 - 35 °C	0 - 40 °C
	Weight	415 g ±10%	580 g ±10%	1,340 g ±10%
	Output Connector	Φ5.5		
	Efficiency Standard	DOE Level VI CoC TIER2		
Input	Input Voltage Range	90 - 264 V		
	Average Efficiency	>89%		
	No Load Power Consumption	<0.15 W		<0.21 W
	Output Power	180 W	230 W	330 W
Output	Output Voltage ( ±5% )	19.5 V		
	Output Current (max.)	9.23 A	11.8 A	16.92 A
	Ripple and Noise	<350 mV	<380 mV	
	Peak Load	>18 V @15.69 A load, 2 ms	>17 V @21.24 A load, 2 ms	>17 V @30 A load, 1 ms
	Cap Life	>13,140 hrs @ 25 °C, 100 V <sub>AC</sub>	>8,760 hrs @ 25 °C, 115 V <sub>AC</sub>	
Performance	Case Temperature Rise	TOP <45 °C @25 °C,100 V <sub>AC</sub> BOT <50 °C @25 °C,100 V <sub>AC</sub>		TOP <55 °C @25 °C,100 V <sub>AC</sub> BOT <55 °C @25 °C,100 V <sub>AC</sub>
	Acoustic Noise (keep 10 cm)	<25 dB		
	Leakage Current (@240 V <sub>AC</sub> )	<100 uA		<70 uA
Safety	Protection Type (OCP/OVP/SCP)	Latch-off		
	Standard	IEC/UL/EN 62368-1		

Reliability meets  
performance  
with your trusted  
adapter selection





[www.deltaww.com](http://www.deltaww.com) | [NBBU.Sales@deltaww.com](mailto:NBBU.Sales@deltaww.com)

2023 - All information and specifications are subjected to change without prior notice.

© 2023 Delta Electronics, Inc. All Right Reserved.

Version 1.1