

Actuator

14-
746.0292

Distribution by
DigiKey

DigiKey



<https://digikey.eao.com/p/14-746.0292>

Your product:



14-746.0292 Actuator

OPERATING-/INDICATION PART

Lens illumination: illuminative

ELECTRICAL CHARACTERISTICS

Standards: According to EN/IEC 61058-1

Electrical lifetime: 50 000 cycles of operation

Electric strength: 3000 VAC, 50 Hz, 1 min. between all terminals and earth, according to EN/IEC 61058-1

Thermal current I_{th}: 5 A, according to EN / IEC 60947-5-1
The maximum current in continuous operation and at ambient temperature not exceeding the quoted maximum values.

Protection class: II

Rated Operational Voltage U_e: 250 VAC/DC according to EN IEC 61058-1

Switching voltage and switching current:
250 VAC, 5 A (ohmic)
250 VAC, 2 A (inductive, cos(phi) = 0.7)
220 VDC, 0.1 A (inductive, L:R = 30 ms)
110 VDC, 0.2 A (inductive, L:R = 30 ms)
60 VDC, 0.7 A (inductive, L:R = 30 ms)
24 VDC, 2 A (inductive, L:R = 30 ms)

Contacts: 2 NC / 2 NO

MECHANICAL CHARACTERISTIC

Terminal: Universal terminal, 2 x 0.5 mm

Operating Travel: 3 mm

Contact material: Gold

Operating force: 3 N ... 6 N

Tightening torque: Fixing nut max. 0.25 Nm

Switching action: Momentary

Switching system:	Snap-action switching element
Switching system:	Self-cleaning, double-break snap action switching system, 1 normally closed and 1 normally open contact per element.
Weight:	0.016 kg
Mechanical lifetime:	2 Mio. cycles of operation

AMBIENT CONDITION

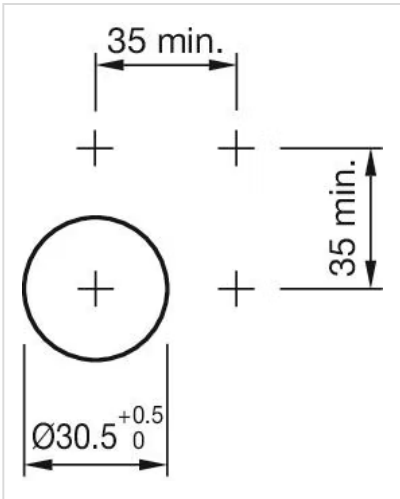
Climate resistance:	Standard condition, as per DIN EN 60068-2-78 Standard cyclic, as per DIN IEC 60068-2-30
Vibration resistance:	Max. 100 m / s ² from 10 Hz ... 500 Hz, (sinusoidal EN IEC 60068-2-6)
Storage temperature:	- 40 °C ... + 85 °C
Shock resistance:	Max. 150 m / s ² , pulse width 11 ms, 3-axis, (semi-sinusoidal as per EN IEC 60068-2-27)
Operating temperature:	- 25 °C ... + 55 °C, mounted as a block, make sure the heat can escape freely
IP front protection:	IP67, according to DIN EN 60529

CERTIFICATE

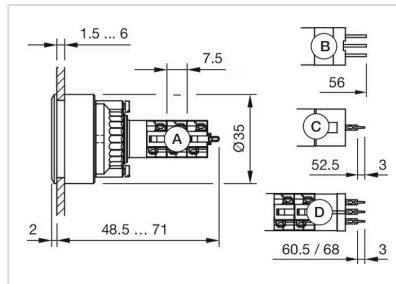
Approbations:	CB (IEC 61058-1), CQC, CSA, DNV, ENEC (EN 61058-1), UL
Conformities:	CE, UKCA, 2011 / 65 / EC (RoHS), 2014 / 35 / EU (LVD)

OTHER

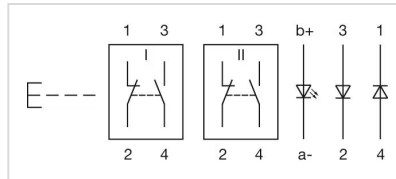
Housing colour:	Black
max. number of switching elements:	1
Short Description:	Actuator, illuminative, 2 NC / 2 NO, Momentary, Universal terminal, 2 x 0.5 mm, IP67, according to DIN EN 60529
Mounting cut-outs:	



Dimension drawings:



Wiring diagrams:



Component layouts:

