

GlobTek, Inc. www.globtek.com 186 Veterans Drive, Northvale, NJ 07647 Tel. (201) 784-1000 Fax (201) 784-0111	Drawing Title: High Power DC Connectors, , Efficiency Level: , Case Color/Style: GlobTek Black, , , Input Rating: , , Output Rating: W, 0.0V@0.0A, Output Configuration: mm, / Cond, , , Ferrite: , , GT Cord # , Pin Out: , Blades/Input Cord: , Approvals: to , GT Cab Model No. <a href="#">High Power DC Connectors</a> Part No./Ordering No. <a href="#">JACK-L-LKWGPC-5A(R)</a> Rev A1
---	---

In Addition to GlobTek Inc.'s renewed ISO9001:2008 - Quality Management System Certification, GlobTek Inc. is now certified to:

ISO13485:2003 - Medical Devices Quality Management System Certification  
ISO14001:2004 - Environmental Management System Certification

ISO Certificates are available online at <http://www.globtek.com/iso-certificates/>

The acceptance of this specification and use of the product described in this document indicates the acceptance and binding of the customer to Globtek TERMS AND CONDITIONS (attached to the end of this document), which supersede all other agreements, terms, and conditions ( <http://www.globtek.com/terms-and-conditions/>).

Prop 65 Statement:<https://www.globtek.com/prop-65-statement.pdf>

Footnote:

GlobTek Inc. will not be liable for the safety and performance of these power supplies if unauthorized access and repair occurs. End user should consult applicable UL, CSA or EN standards for proper installation instruction.

Limitation of Use:

GlobTek products are intended for use with commercial, medical, and/or industrial equipment only. GlobTek product are not authorized for use as mission critical components in life support hazardous environment, nuclear or aircraft applications without prior written approval from the CEO of GlobTek Inc.

Contents of this document are subject to change without prior notice.

### Customer Approval of Specification:

Please approve, sign and send back to GlobTek so we can complete order processing.  
A delay in receipt of this form will delay delivery schedule.

Company Name:	Customer P/N:
Quote Number:	Date:
Authorized Representative Name:	Authorized Representative Signature:

GlobTek, Inc. www.globtek.com 186 Veterans Drive, Northvale, NJ 07647 Tel. (201) 784-1000 Fax (201) 784-0111	Drawing Title: High Power DC Connectors, , Efficiency Level: , Case Color/Style: GlobTek Black, , , Input Rating: , , Output Rating: W, 0.0V@0.0A, Output Configuration: mm, / Cond, , , Ferrite: , , GT Cord # , Pin Out: , Blades/Input Cord: , Approvals: to , GT Cab			
	Model No. <a href="#">High Power DC Connectors</a>			
	Part No./Ordering No. <a href="#">JACK-L-LKWGPC-5A(R)</a>			Rev A1

REVISION HISTORY

REV	DESCRIPTION	SUB	DATE	APPROVED
A1	Add product picture, update the datasheet to add "Similar to: " and "Mates with:"	QA	01/24/2024	QA
A	Initial release	jmani	08/10/2022	JANICE

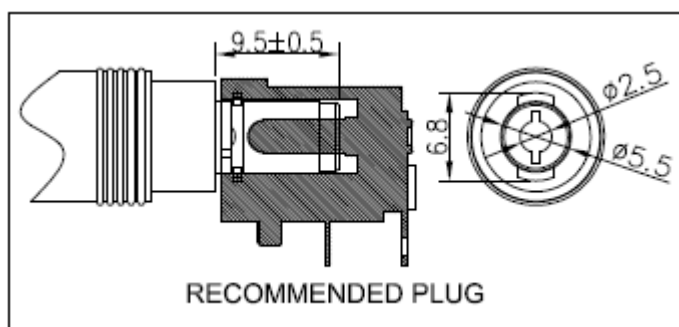
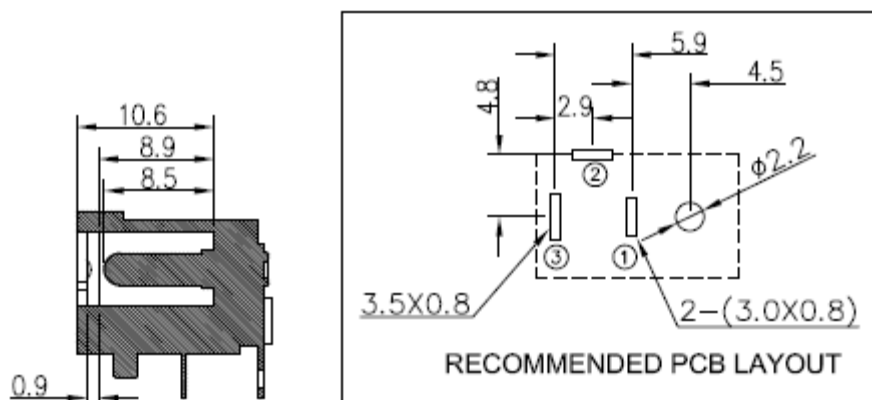
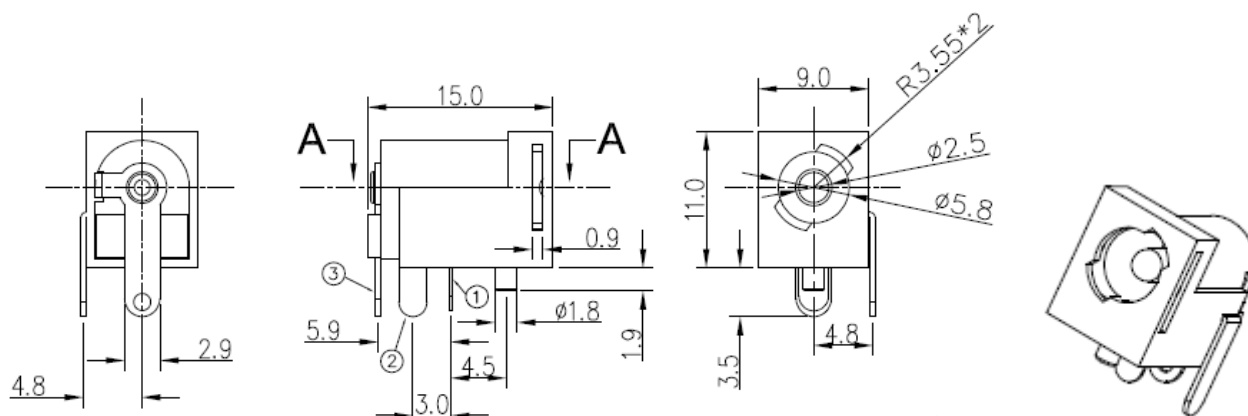
3D CAD FILE:  
[https://www.globtek.com/file/dl/JACK-L-LKWGPC-5A\(R\).stp](https://www.globtek.com/file/dl/JACK-L-LKWGPC-5A(R).stp)

AGENCY ONLINE DOCUMENTS	
RoHS/RoHS3 Declaration	<a href="https://www.globtek.com/pdf/rohs_cert/01t3a000004Wju6AAC">https://www.globtek.com/pdf/rohs_cert/01t3a000004Wju6AAC</a>
REACH Declaration	<a href="https://www.globtek.com/pdf/iso_certificates/REACH.pdf">https://www.globtek.com/pdf/iso_certificates/REACH.pdf</a>
Conflict Minerals Declaration	<a href="https://www.globtek.com/pdf/conflict-minerals.pdf">https://www.globtek.com/pdf/conflict-minerals.pdf</a>
Prop 65 Statement	<a href="https://en.globtek.com/prop-65-statement.pdf">https://en.globtek.com/prop-65-statement.pdf</a>

IPXY rating is based on 3rd party testing and customers should check suitability and test system level IPXY rating before ordering.



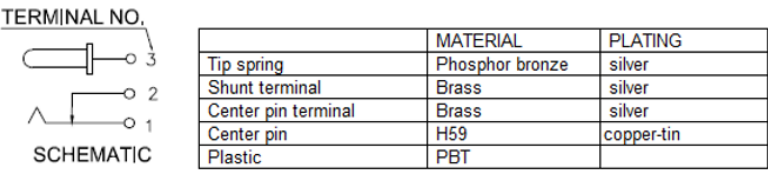
GlobTek, Inc. www.globtek.com 186 Veterans Drive, Northvale, NJ 07647 Tel. (201) 784-1000 Fax (201) 784-0111	Drawing Title: High Power DC Connectors, Efficiency Level: , Case Color/Style: GlobTek Black, , Input Rating: , , Output Rating: W, 0.0V@0.0A, Output Configuration: mm, / Cond, , Ferrite: , , GT Cord # , Pin Out: , Blades/Input Cord: , Approvals: to , GT Cab Model No. <a href="#">High Power DC Connectors</a> Part No./Ordering No. <a href="#">JACK-L-LKWGPC-5A(R)</a> Rev A1
---	---



Similar to: RASH712BK RAPC712BK KLDHCX-0202-BP-LT KLDHCX-0202-B-LT KLDX-0202-BP-LT KLDX-0202-B-LT  
PJ-059B PJ-058B 4840.2212

Mates with: 760BK KLDX-PA-0202-B-LT PP-2555TL-M 4840.1211

GlobTek, Inc. www.globtek.com 186 Veterans Drive, Northvale, NJ 07647 Tel. (201) 784-1000 Fax (201) 784-0111	Drawing Title: High Power DC Connectors, , Efficiency Level: , Case Color/Style: GlobTek Black, , , Input Rating: , , Output Rating: W, 0.0V@0.0A, Output Configuration: mm, / Cond, , , Ferrite: , , GT Cord # , Pin Out: , Blades/Input Cord: , Approvals: to , GT Cab	
	Model No. <a href="#">High Power DC Connectors</a>	
	Part No./Ordering No. <a href="#">JACK-L-LKWGPC-5A(R)</a>	Rev A1



SPECIFICATIONS

parameter	conditions/description	min	typ	max	units
rated input voltage			48		Vdc
rated input current				5	A
contact resistance				30	mΩ
insulation resistance		100			MΩ
voltage withstand	at 50/60Hz for 1 minute 500 Vac			500	Vac
solder pot temperature		240	245	250	°C
soldering time			2		sec
life			5000		cycles

GlobTek, Inc. www.globtek.com 186 Veterans Drive, Northvale, NJ 07647 Tel. (201) 784-1000 Fax (201) 784-0111	Drawing Title: High Power DC Connectors, , Efficiency Level: , Case Color/Style: GlobTek Black, , , Input Rating: , , Output Rating: W, 0.0V@0.0A, Output Configuration: mm, / Cond, , , Ferrite: , , GT Cord # , Pin Out: , Blades/Input Cord: , Approvals: to , GT Cab	
	Model No. <a href="#">High Power DC Connectors</a>	
	Part No./Ordering No. <a href="#">JACK-L-LKWGPC-5A(R)</a>	Rev A1

PACKAGING

Packing Spec P/N:	
Box Qty:	1000
Gift Box Size (mm):	
Gift Box Color:	White
Master Carton Size (mm):	243 x 243 x 190
Master Carton Cubic Volume (m³): 0.01	
Master GW (Kg):	kg
wt Ea. (Kg):	kg
wt Ea. (Kg):	kg
LABEL SPECS: ,	
PACK SPEC:	