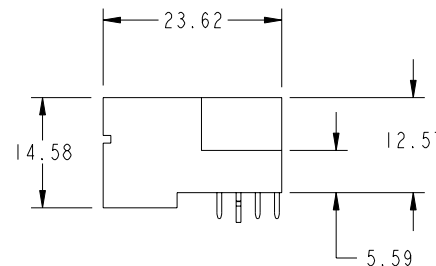
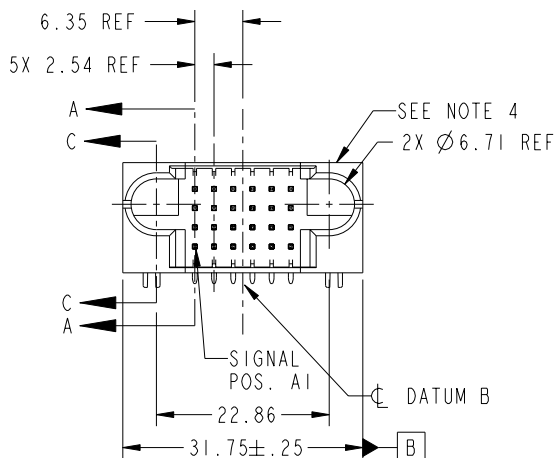


Tous droits strictement réservés. Reproduction ou communication o des tiers interdite sous quelque forme que ce soit sans autorisation écrite du propriétaire. Propriete de c FCI. Droits de reproduction FCI.



All rights strictly reserved. Reproduction or issue to third parties in any form whatever is not permitted without written authority from the proprietor. Property of FCI. Copyright FCI.

PRODUCT NO.	ROWS	SIGNAL					
		E1	1	2	3	4	5
51939-266-- NOTE 3	D C B A						



CODE	DIM "M" MATING LENGTH	CONTACT TYPE
U	[6.86]	SIGNAL
T	[6.86]	SIGNAL
S	[6.86]	SIGNAL
HA	[N/A]	HOLD-DOWN
E	[5.59]	SIGNAL

mat'l code				SEE NOTE		tolerances unless otherwise specified		CUSTOMER		www.fciconnect.com	
ltr	ecn no.	dr	date	linear	0.X ±0.3		COPY		title 24S RIGHT ANGLE SOLDER HEADER		
A	DG06-0502	JULIA	12/01/06		0.XX ±0.13		projection				
					angles	0.XXX ±0.051					
				dr	JULIA WANG	12/01/06	MM		product family PwrBlade		code
				engr	RYAN YUAN	12/01/06	← MM →		size		213
				chr	BEER FU	12/01/06	scale 1:1		A 51939-266		sheet 1 of 4
				appd	JOSEPH HSIA	12/01/06					
sheet index	revision sheet	A 1	A 2	A 3	A 4						

Pro/E

cage code 22526

PDM: Rev:A

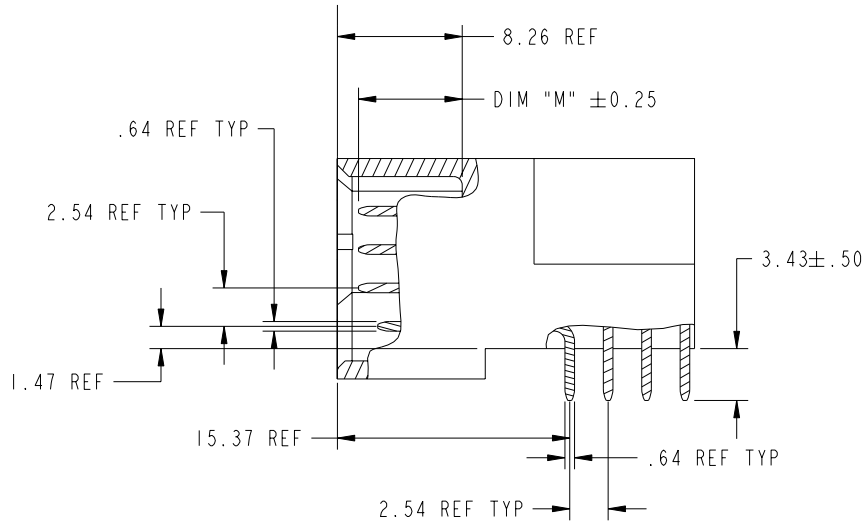
STATUS: Released

Printed: Dec 20, 2010

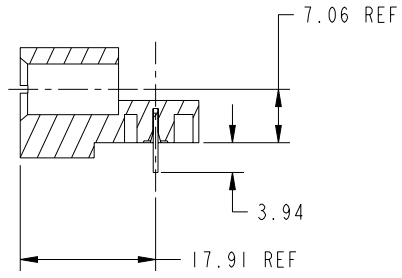
Tous droits strictement reserves. Reproduction ou communication a des tiers interdite sous quelque forme que ce soit sans autorisation ecrite du proprietaire. Propriete de c FCI. Droits de reproduction FCI.

All rights strictly reserved. Reproduction or issue to third parties in any form whatever is not permitted without written authority from the proprietor. Property of FCI. Copyright FCI.

PRODUCT NUMBER
51939-266__
NOTE: 3



BROKEN-OUT SECTION A-A
SCALE 2:1



SECTION C-C

mat'l code				SEE NOTE		tolerances unless otherwise specified		CUSTOMER		FCI www.fciconnect.com	
ltr	ecn no.	dr	date	linear	0.X ±0.3	projection		COPY		title	
A					0.XX ±0.13	MM		A		24S RIGHT ANGLE SOLDER HEADER	
				angles	0.XXX ±0.051	scale		product family		code	
				dr	0° ±2°	1:1		PwrBlade		213	
				enr	JULIA WANG 12/01/06			size		sheet	
				chr	RYAN YUAN 12/01/06			A		2 of 4	
				appd	BEER FU 12/01/06			51939-266			
					JOSEPH HSIA 12/01/06						
sheet index	revision sheet										

cage code 22526

Pro/E

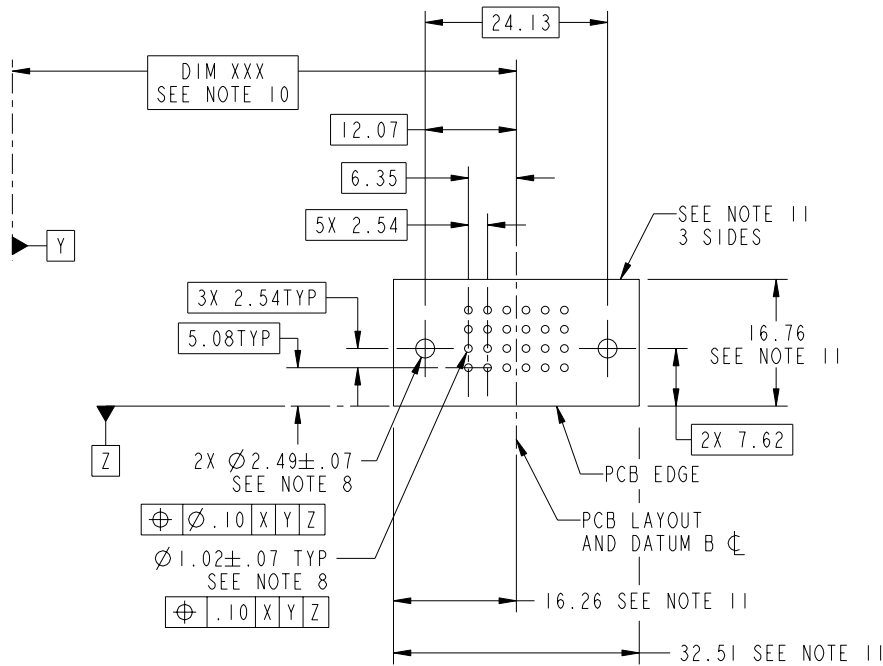
Tous droits strictement reserves. Reproduction ou communication a des tiers interdite sous quelque forme que ce soit sans autorisation ecrite du proprietaire. Propriete de c FCI. Droits de reproduction FCI.

All rights strictly reserved. Reproduction or issue to third parties in any form whatever is not permitted without written authority from the proprietor. Property of FCI. Copyright FCI.



PRODUCT NUMBER

51939-266__
NOTE: 3



RECOMMENDED PCB LAYOUT

mat'l code				SEE NOTE		tolerances unless otherwise specified		CUSTOMER		www.fciconnect.com	
ltr	ecn no.	dr	date	linear	0.X ±0.3		COPY		title 24S RIGHT ANGLE SOLDER HEADER		
A					0.XX ±0.13						
					angles	0.XXX ±0.051				product family PwrBlade code	
				dr		JULIA WANG	12/01/06			size	
				enr	RYAN YUAN	12/01/06			size		
				chr	BEER FU	12/01/06			A 51939-266		
				appd	JOSEPH HSIA	12/01/06			sheet 213		
sheet index		revision sheet								3 of 4	

Pro/E

cage code 22526

PDM: Rev:A

STATUS: Released

Printed: Dec 20, 2010

Tous droits strictement reserves. Reproduction ou communication o des tiers interdite sous quelque forme que ce soit sans autorisation ecrite du proprietaire. Propriete de c FCI. Droits de reproduction FCI.



All rights strictly reserved. Reproduction or issue to third parties in any form whatever is not permitted without written authority from the proprietor. Property of FCI. Copyright FCI.

PRODUCT NUMBER

51939-266__
NOTE: 3

NOTES:

1. DIMENSIONS AND TOLERANCES ARE IN ACCORDANCE WITH ASME Y14.5M, 1994 UNLESS OTHERWISE SPECIFIED.

CONNECTOR NOTES:

- 2. HOUSING MATERIAL: UL 94 V-0 GLASS FILLED
HIGH-TEMP THERMOPLASTIC
POWER CONTACT MATERIAL: COPPER ALLOY
SIGNAL PIN MATERIAL: COPPER ALLOY
 - 3. 51939-266;51939-266LF;51939-266GLF PLATING SPEC. SEE PRINT:10064183
 - 4. MANUFACTURER'S NAME, P/N, AND DATE CODE TO APPEAR ON THIS SURFACE.
 - 5. PRODUCT SPECIFICATION GS-12-149.
APPLICATION SPECIFICATION BUS-20-067.
 - 6. PACKAGED IN TRAYS.
- PCB NOTES:
- 7. ALL HOLE DIAMETERS ARE FINISHED HOLE SIZE.
 - 8. MOUNTING HOLES, WHERE APPLICABLE, ARE UNPLATED.
 - 9. $\varnothing 1.151 \pm 0.025$ DRILLED HOLES PLATED WITH 0.008 MIN SnPb OR Sn OVER 0.03 TO 0.08 Cu PLATING TO ACHIEVE $\varnothing 1.02 \pm .07$ HOLE.
 - 10. "DIM XXX" TO BE DETERMINED BY THE CUSTOMER.
 - 11. CONNECTOR KEEP-OUT ZONE.

mat'l code		SEE NOTE		tolerances unless otherwise specified		CUSTOMER		 www.fciconnect.com	
ltr	ecn no.	dr	date	linear	0.X ± 0.3	COPY		title	
A					0.XX ± 0.13	projection		24S	
				angles	0.XXX ± 0.051			RIGHT ANGLE SOLDER HEADER	
					0° ± 2°			product family	
				dr	JULIA WANG	12/01/06	PwrBlade		code
				enr	RYAN YUAN	12/01/06	size		213
				chr	BEER FU	12/01/06	dwg no		sheet
				appd	JOSEPH HSIA	12/01/06	A		4 of 4
sheet index		revision sheet		scale		1:1		cage code	
								22526	

Pro/E

cage code 22526

PDM: Rev:A

STATUS: Released

Printed: Dec 20, 2010