

SMA Male Right Angle to SMB Plug Right Angle Cable Using RG316 Coax



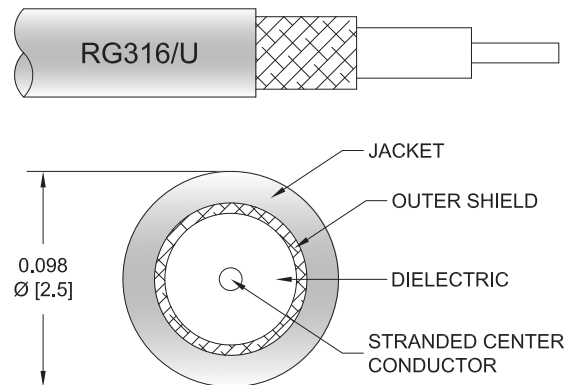
PE3070

Configuration

- Connector 1: SMA Male Right Angle
- Connector 2: SMB Plug Right Angle
- Cable Type: RG316
- Coax Flex Type: Flexible

Features

- Max Frequency 3 GHz
- 69% Phase Velocity
- FEP Jacket



Applications

- General Purpose
- Laboratory Use

Description

Pasternack's PE3070 SMA male right angle to SMB plug right angle cable using RG316 coax is part of our full line of RF components available for same-day shipping. Pasternack's flexible RF cable assemblies are ideal for applications where tight bends and flexure are required. This Pasternack SMA to SMB cable assembly has a male to plug gender configuration with 50 ohm flexible RG316 coax. The PE3070 SMA male to SMB plug cable assembly operates to 3 GHz. The right angle SMA and right angle SMB interfaces on the RG316 cable allow for easier connections in tight spaces.

Custom versions of most RF cable assemblies can be built and shipped same day. Custom cable assembly lengths can be obtained by specifying the desired length on the web site at time of order or by contacting a sales representative. Other available RF cable assembly value added services include connector orientation or clocking, heat shrink booting and custom labeling. RF testing can also be performed to document the electrical performance of your cable assembly.

Electrical Specifications

| Description | Minimum | Typical | Maximum | Units |
|-------------------------|---------|---------|---------|-------|
| Frequency Range | DC | | 3 | GHz |
| VSWR | | | 1.4:1 | |
| Velocity of Propagation | | 69 | | % |
| Operating Voltage (AC) | | | 250 | Vrms |
| Jacket Spark | | | 2,000 | Vrms |

Specifications by Frequency

SMA Male Right Angle to SMB Plug
Right Angle Cable Using RG316 Coax



PE3070

| Part Number | Length | Description | F1 | F2 | F3 | F4 | F5 | Units | Weight (lbs) |
|-------------|--------------------------|-----------------------|-----------|------|------|------|------|-------|--------------|
| | | | Frequency | | | | | MHz | |
| PE3070 | Custom Lengths Available | Insertion Loss (Typ.) | 0.11 | 0.16 | 0.24 | 0.38 | 0.58 | dB/ft | |
| | | | 0.37 | 0.53 | 0.79 | 1.25 | 1.91 | dB/m | |
| PE3070-12 | 12 inch | Insertion Loss (Typ.) | 0.51 | 0.56 | 0.64 | 0.78 | 0.98 | dB | 0.039 |
| PE3070-24 | 24 inch | Insertion Loss (Typ.) | 0.62 | 0.72 | 0.88 | 1.16 | 1.56 | dB | 0.05 |
| PE3070-36 | 36 inch | Insertion Loss (Typ.) | 0.73 | 0.88 | 1.12 | 1.54 | 2.14 | dB | 0.06 |
| PE3070-48 | 48 inch | Insertion Loss (Typ.) | 0.84 | 1.04 | 1.36 | 1.92 | 2.72 | dB | 0.07 |
| PE3070-72 | 72 inch | Insertion Loss (Typ.) | 1.06 | 1.36 | 1.83 | 2.68 | 3.88 | dB | 0.09 |

The insertion loss data for the base model does not include loss due to the connectors. Each length includes insertion loss due to the connectors.

Loss due to Connector 1: 0.2 dB
 Loss due to Connector 2: 0.2 dB
 Base Weight: 0.039 pounds
 Additional Weight per Inch: 0.00084 pounds

Mechanical Specifications

Cable Assembly

Weight 0.039 lbs [17.69 g]

Cable

Cable Type RG316
 Impedance 50 Ohms
 Inner Conductor Type Stranded
 Inner Conductor Material and Plating Copper Clad Steel, Silver
 Dielectric Type PTFE
 Number of Shields 1
 Shield Layer 1 Silver Plated Copper Braid
 Jacket Material FEP, Tan
 Jacket Diameter 0.102 in [2.59 mm]

SMA Male Right Angle to SMB Plug
Right Angle Cable Using RG316 Coax



PE3070

Connectors

| Description | Connector 1 | Connector 2 |
|---------------------------------------|----------------------|------------------------|
| Type | SMA Male Right Angle | SMB Plug Right Angle |
| Specification | MIL-STD-348A | MIL-STD-348A |
| Impedance | 50 Ohms | 50 Ohms |
| Configuration | Right Angle | Right Angle |
| Contact Material and Plating | Brass, Gold | Beryllium Copper, Gold |
| Contact Plating Specification | 50 µin minimum | 30 µin minimum |
| Dielectric Type | PTFE | PTFE |
| Outer Conductor Material and Plating | | Brass, Nickel |
| Outer Conductor Plating Specification | | 100 µin minimum |
| Body Material and Plating | Brass, Nickel | Brass, Nickel |
| Body Plating Specification | 100 µin minimum | 100 µin minimum |
| Coupling Nut Material and Plating | Brass, Nickel | |
| Coupling Nut Plating Specification | 100 µin minimum | |
| Hex Size | 5/16 inch | |
| Torque | 5 in-lbs 0.57 Nm | |

Environmental Specifications

Operating Range Temperature -55 to +165 deg C

Compliance Certifications (see [product page](#) for current document)

Plotted and Other Data

Notes:
Values at 25°C, sea level.

SMA Male Right Angle to SMB Plug Right Angle Cable Using RG316 Coax

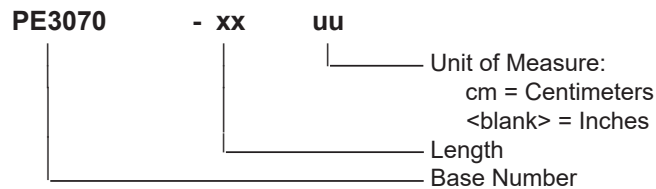


PE3070

Typical Performance Data

How to Order

Part Number Configuration:



Example: PE3070-12 = 12 inches long cable
PE3070-100cm = 100 cm long cable

SMA Male Right Angle to SMB Plug Right Angle Cable Using RG316 Coax from Pasternack Enterprises has same day shipment for domestic and International orders. Our RF, microwave and millimeter wave products maintain a 99.4% availability and are part of the broadest selection in the industry.

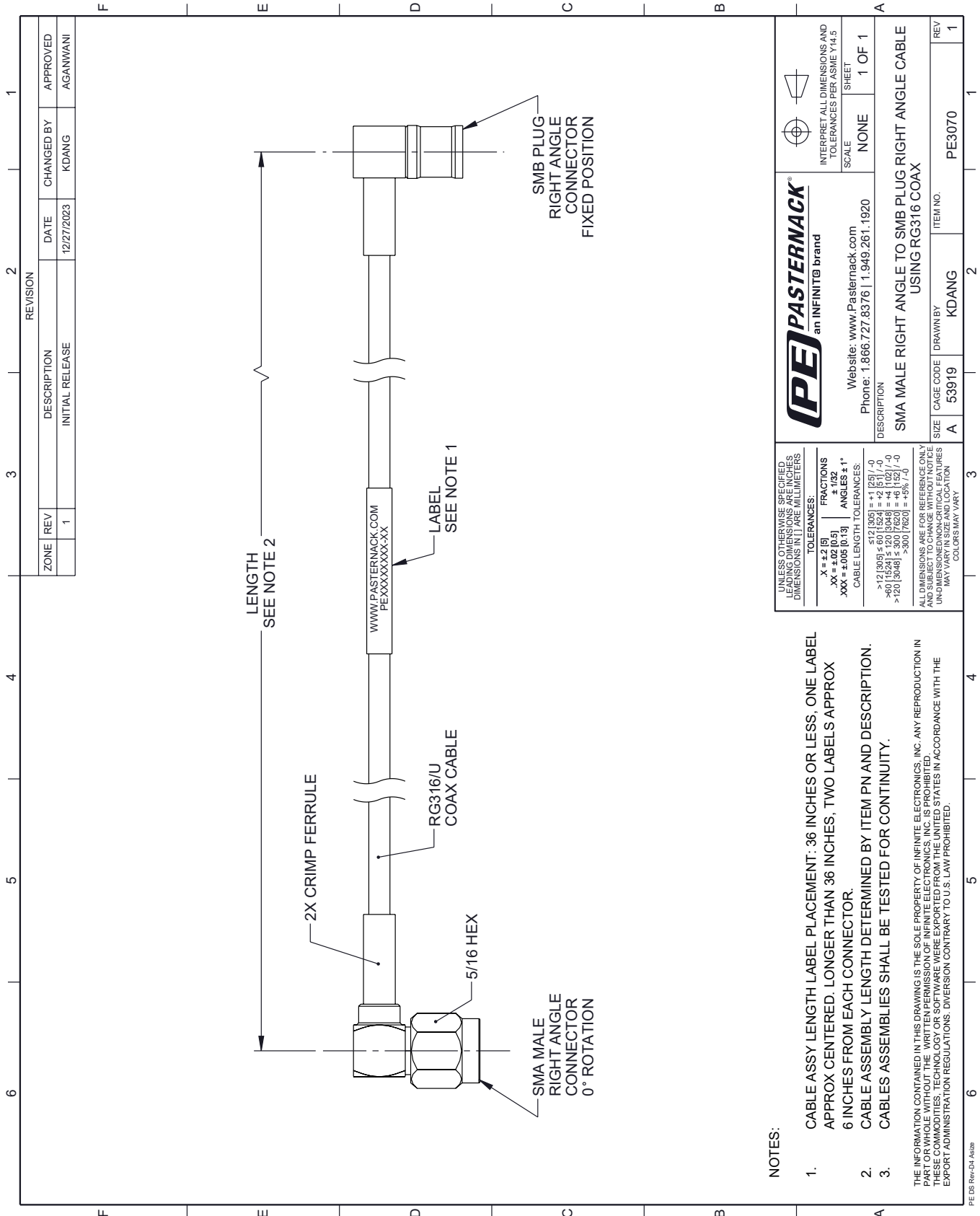
Click the following link (or enter part number in "SEARCH" on website) to obtain additional part information including price, inventory and certifications: [SMA Male Right Angle to SMB Plug Right Angle Cable Using RG316 Coax PE3070](#)

URL: <https://www.pasternack.com/sma-male-right-angle-to-smb-plug-cable-using-rg316-pe3070-p.aspx>

The information contained within this document is accurate to the best of our knowledge and representative of the part described herein. It may be necessary to make modifications to the part and/or the documentation of the part in order to implement improvements. Pasternack Enterprises reserves the right to make such changes as required. Unless otherwise stated, all specifications are nominal. Pasternack Enterprises does not make any representation or warranty regarding the suitability of the part described herein for any particular purpose, and Pasternack Enterprises does not assume liability arising out of the use of any part or document.

PE3070 CAD Drawing

SMA Male Right Angle to SMB Plug Right Angle Cable Using RG316 Coax



(PE) PASTERNAK®
an INFINITB brand

Website: www.Pasternack.com
Phone: 1.866.727.8376 | 1.949.261.1920

DESCRIPTION: SMA MALE RIGHT ANGLE TO SMB PLUG RIGHT ANGLE CABLE USING RG316 COAX

SCALE: NONE
SHEET: 1 OF 1

INTERPRET ALL DIMENSIONS AND TOLERANCES PER ASME Y14.5

| SIZE | CAGE CODE | DRAWN BY | ITEM NO. | REV |
|------|-----------|----------|----------|-----|
| A | 53919 | KDANG | PE3070 | 1 |