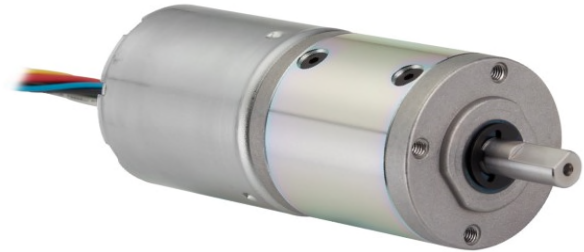




Our BLDC Planetary Gear Motors are an inline solution providing excellent torque output and superior reliability and control.

With endless performance combinations, we have a fully tailored gear motor solution for you.

Contact Us for alternative solutions!



Specifications			
Gearhead Type:	Planetary	No-Load Speed:	74 rpm (+/- 10%)
Motor Type:	Brushless (8 Pole / 6 Slot)	No-Load Current:	<1.5 A
Rated Voltage:	24V DC	Stall Torque:	* 274 kg.cm
Rated Speed:	59 rpm	Max. Power:	51 W
Rated Torque:	56 kg.cm	Reduction Ratio:	51:1
Rated Current:	3.5 A	Termination Style:	Lead Wires / JST XHP-5

* Gearbox limitations are set at 70 kg.cm, operating past this torque limit may create premature failure.

Dimensions

units: mm

PIN	Function	Color	Wire Gauge
PIN 8	Vcc (3.3~5V)	GRN	
PIN 7	Hall W	GRY	UL1430
PIN 6	Hall V	BRW	26 AWG
PIN 5	Hall U	YLW	
PIN 4	GND	BLU	
PIN 3	Phase W	WHT	UL1430
PIN 2	Phase V	BLK	18 AWG
PIN 1	Phase U	RED	

Wire Length: 280±20mm
Connector Type: JST XHP-5

