



Our BLDC Planetary Gear Motors are an inline solution providing excellent torque output and superior reliability and control.

With endless performance combinations, we have a fully tailored gear motor solution for you.

Contact Us for alternative solutions!



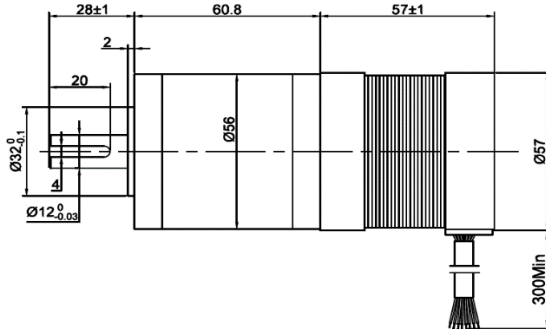
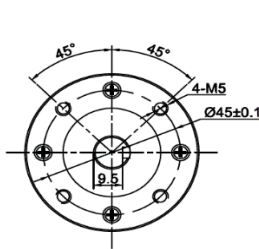
Specifications

Gearhead Type:	Planetary
Motor Type:	Brushless - 4 Pole
Rated Voltage:	24V DC
Rated Speed:	19 rpm
Rated Torque:	46 kg.cm
Rated Current:	1.2 A

No-Load Speed:	26 rpm (+/- 10%)
No-Load Current:	< 0.75 A
Max. Power:	12 W
Reduction Ratio:	72:1
Termination Style:	Lead Wires (26/20AWG)

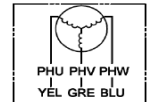
\* Gearbox limitations are set at 150 kg.cm, operating past this torque limit may create premature failure.

Dimensions



+5V	RED	
Hall U	YEL	UL1007
Hall V	GRE	26 AWG
Hall W	BLU	
GRD	BLK	
Phase U	YEL	UL1007
Phase V	GRE	20AWG
Phase W	BLU	

Note: hall sensor power supply voltage +5 to +20VDC



units: mm

Performance Curve

