

BC7-12-0

1600 lb WLL*

LOW PROFILE BEAM CLAMP WITH OPEN HANG POINT

BeamWare™



Threaded Rod Suspension

CHANNEL STYLE BEAM CLAMP

Standard, pre-engineered beam clamps anchor to a building's beam structure and offer a safe and predictable method for suspending objects from overhead. This channel style beam clamp is adjustable, mounts flush underneath the beam's flange and provides a centrally located mounting hole for use with many types of connections, including all-thread, yokes and U-Brackets, truss clamps, Unistrut, etc.

Use the BC7-12 channel style beam clamp to provide a load rated overhead rigging point from structural I-Beams with flange widths ranging between 7" and 12" (178-305mm). This beam clamp model provides a fast, easy and safe way to rig direct loads from overhead and a hand wrench is all that is required to secure this clamp.

* Steel I-Beams Only

For Vertical Loading Only



Pipe Adapter for 1/2" and 1-1/2" dia. Pipe

KEY FEATURES:

- ▶ Center hole for 5/8" diameter threaded rod.
- ▶ Center hole for 1/2" & 1-1/2" dia. pipe adapters
- ▶ Provides safe load-rated suspension
- ▶ Clamps securely to beam flange widths from 7" - 12"

OPTIONAL ACCESSORIES:

- ▶ See Threaded Rod Datasheet
- ▶ See Threaded Pipe Datasheet
- ▶ CG-500NPS-PEC 1/2" dia. Pipe Adapter
- ▶ CG-150NPS-PEC 1-1/2" dia. Pipe Adapter

SPECIFICATIONS:

Material: Structural C-Channel

Finish: Powder Coat

Color: Black

Design Factor: 5:1

WLL: 1600 lb / 726 kg for Steel I-Beams

For Vertical Loading Only

Weight: 8.8 lb / 4 kg

*WLL = Working Load Limit

*** Not for human suspension**

PACKAGE CONTENTS:

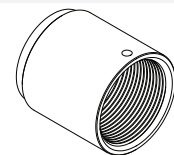
1 pc 7"-12" Beam Clamp Channel

2 pcs Locking Angle Plate

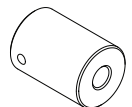
2 pcs Flat Washer, 5/8"

2 pcs Nyloc Nut, 5/8-11

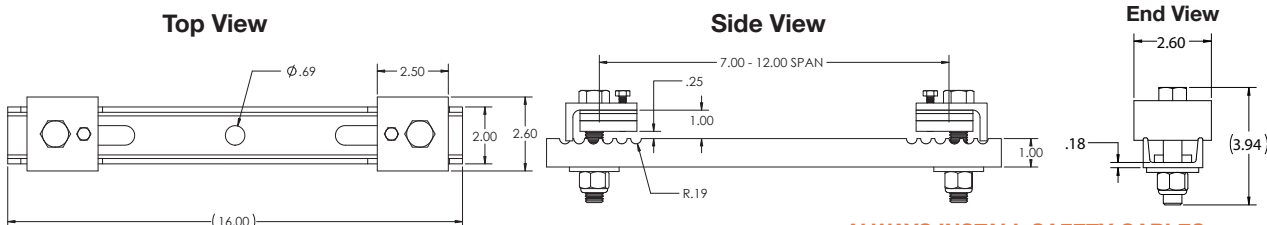
2 ea. 3/8", 1/4" and 1/8" Spacers



1-1/2" pipe adapter



1/2" pipe adapter



Adaptive Technologies Group
1635 E. Burnett Street | Signal Hill, CA 90755 USA
Ph: 562.424.1100 | Fax: 562.424.3520
www.adaptivetechgroup.com



ALWAYS INSTALL SAFETY CABLES

WARNING: Mounting and/or suspension of equipment requires experienced professionals. Improperly installed equipment can result in property damage, personal injury and/or liability to the installing contractor.