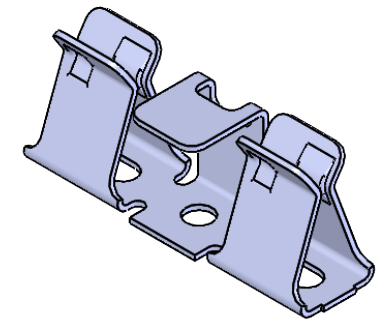
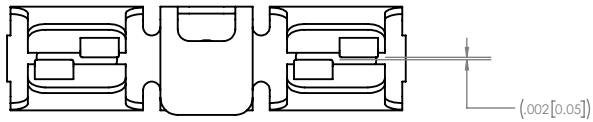


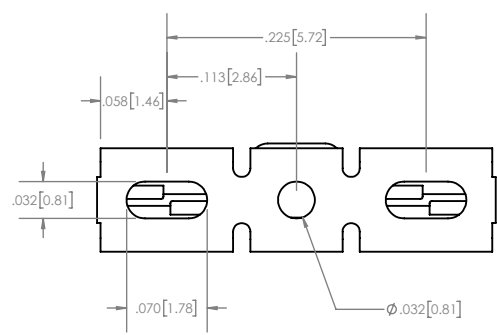
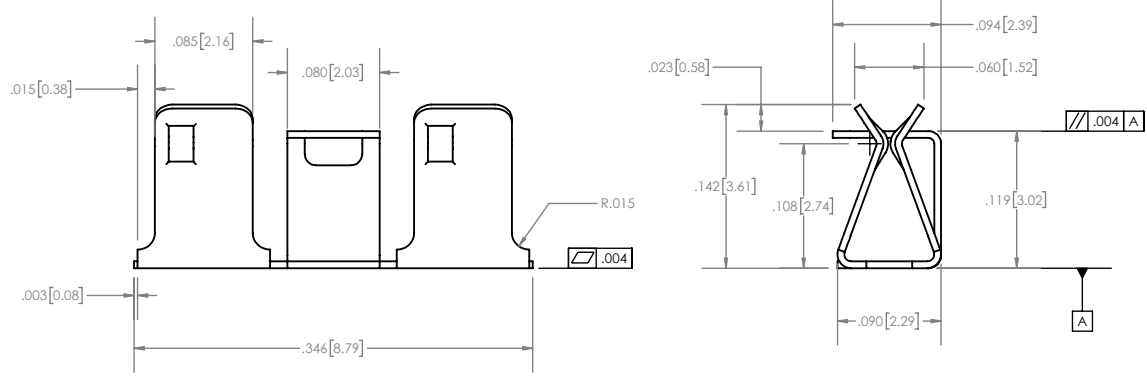
NOTES:

1. MATERIAL: 0.006" COPPER ALLOY SPRING TEMPER
2. FINISH: PREPLATED .000120" MIN MATTE TIN OVER .000050" MIN NICKEL
3. TAPE AND REEL: 2000 QTY PER REEL

REV	ECO #	DESCRIPTION	DATE
-		PRE-RELEASE	21-07-21
0		INITIAL RELEASE	21-07-21



ISOMETRIC VIEW



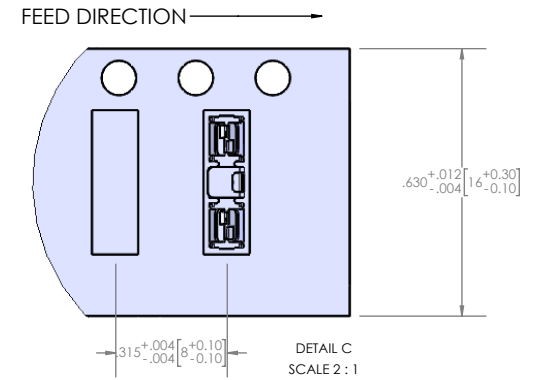
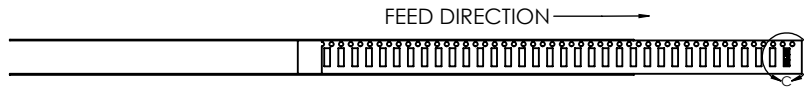
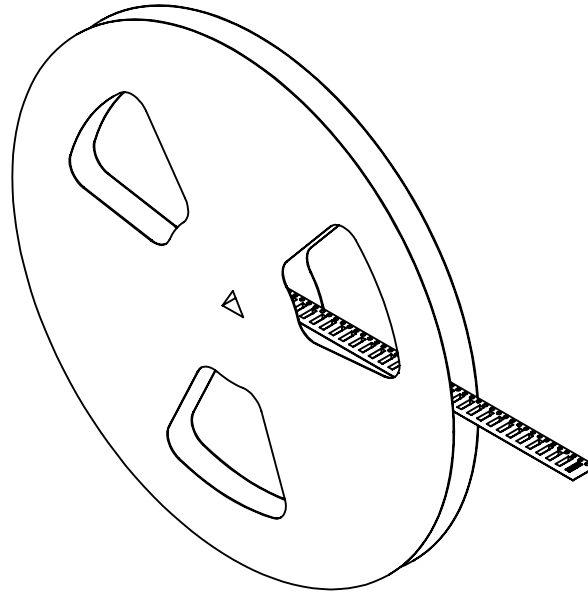
SHIELDING IS OUR SPECIALTY  
3Gshielding.com

**PROPRIETARY NOTICE:** THESE DRAWINGS, LISTS OR SPECIFICATIONS ARE THE CONFIDENTIAL INFORMATION AND/OR TRADE SECRETS OF 3GMETALWORK INC. AND ISSUED IN STRICT CONFIDENCE, EXCEPT AS AUTHORIZED BY 3GMETALWORK IN WRITING. THESE DRAWINGS, LISTS OR SPECIFICATIONS SHALL NOT BE REPRODUCED, RE-transmitted, USED FOR THE DESIGN, MANUFACTURE OR SALE OF EQUIPMENT OR USED FOR ANY OTHER PURPOSE OTHER THAN EVALUATION.

UNLESS OTHERWISE SPECIFIED U/M INCHES	TOLERANCE $\pm 0.005$		PART NUMBER <b>SCLP-003-11</b>	REV. <b>0</b>
	ROHS COMPLIANT		DESCRIPTION SHIELD CLIP	QE FILE 21902
CAGE CODE	L 0641	DRAWN BY	JO	DATE
THIS DRAWING WAS PRODUCED USING SOLIDWORKS		CHECKED BY	SCALE	6:1
			SHEET	1 OF 2



NOTES:

- ASSEMBLE IN TAPE AND REEL AS SHOWN



**SHIELDING IS OUR SPECIALTY**  
**3Gshielding.com**

PROPRIETARY NOTICE: THESE DRAWINGS, LISTS OR SPECIFICATIONS ARE THE CONFIDENTIAL INFORMATION AND/OR TRADE SECRETS OF 3GMETALWORX INC. AND ISSUED IN STRICT CONFIDENCE, EXCEPT AS AUTHORIZED BY 3GMETALWORX IN WRITING. THESE DRAWINGS, LISTS OR SPECIFICATIONS SHALL NOT BE REPRODUCED, RE-transmitted, USED FOR THE DESIGN, MANUFACTURE OR SALE OF EQUIPMENT OR USED FOR ANY OTHER PURPOSE OTHER THAN EVALUATION

UNLESS OTHERWISE SPECIFIED U/M INCHES TOLERANCE $\pm 0.005$			PART NUMBER <b>SCLP-003-11</b>	REV. <b>0</b>
	ROHS COMPLIANT		DESCRIPTION <b>SHIELD CLIP</b>	QE FILE <b>21902</b>
CAGE CODE <b>L 0641</b>		DRAWN BY <b>JO</b>	DATE <b>22-06-06</b>	
THIS DRAWING WAS PRODUCED USING SOLIDWORKS		CHECKED BY	SCALE <b>1:4</b>	SHEET <b>2 OF 2</b>