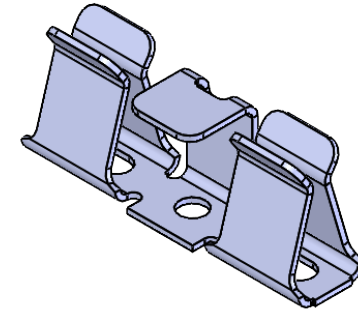
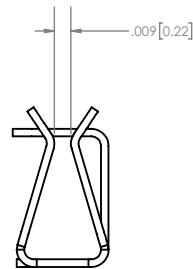
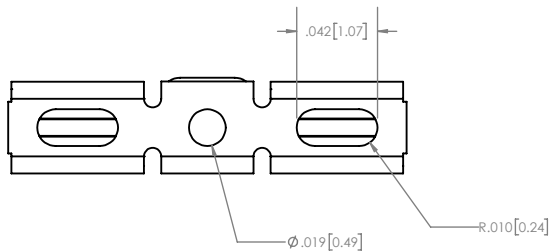
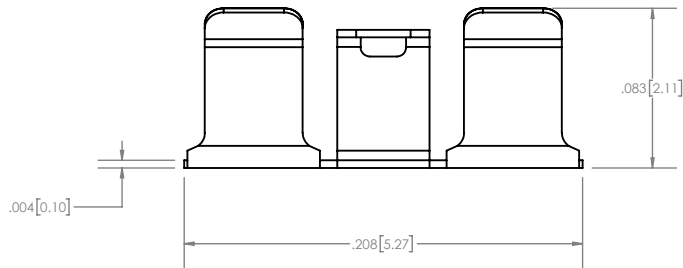
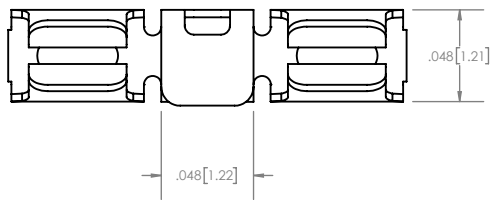
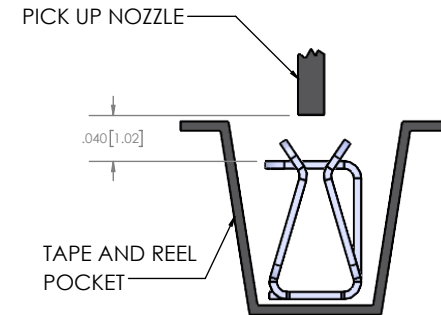


NOTES:



1. MATERIAL: .1mm TIN PLATED BeCu
2. TAPE AND REEL: 2000 QTY PER REEL
3. REFER TO 3D MODEL FOR MISSING DIM.



ISOMETRIC VIEW



PICK AND PLACEMENT

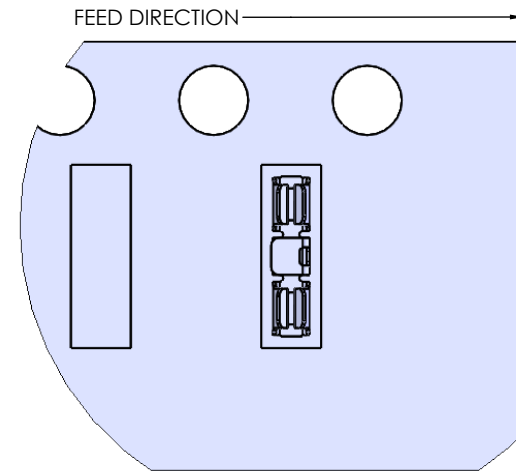
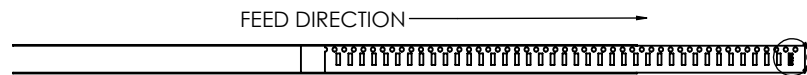
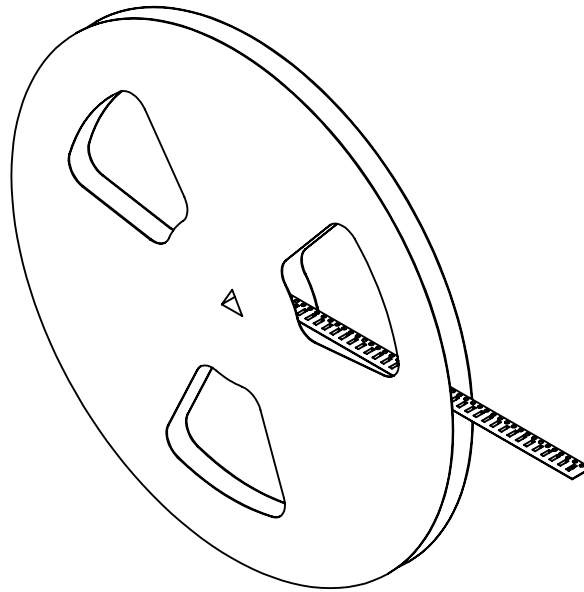
UNLESS OTHERWISE SPECIFIED U/M INCHES TOLERANCE ±0.005			PART NUMBER SCLP-002-11	REV. 0
	ROHS COMPLIANT		DESCRIPTION CLIP	QE FILE 20018
CAGE CODE	L 0641	DRAWN BY	DATE	19-09-04
THIS DRAWING WAS PRODUCED USING SOLIDWORKS		CHECKED BY	SCALE	10:1 SHEET 1 OF 2

SHIELDING IS OUR SPECIALTY
3Gshielding.com

PROPRIETARY NOTICE: THESE DRAWINGS, LISTS OR SPECIFICATIONS ARE THE CONFIDENTIAL INFORMATION AND/OR TRADE SECRETS OF 3GMETALWORK INC. AND ISSUED IN STRICT CONFIDENCE. EXCEPT AS AUTHORIZED BY 3GMETALWORK IN WRITING, THESE DRAWINGS, LISTS OR SPECIFICATIONS SHALL NOT BE REPRODUCED, RE-transmitted, USED FOR THE DESIGN, MANUFACTURE OR SALE OF EQUIPMENT OR USED FOR ANY OTHER PURPOSE OTHER THAN EVALUATION.

NOTE:



1. ASSEMBLE IN TAPE AND REEL AS SHOWN



DETAIL C
SCALE 4 : 1

SHIELDING IS OUR SPECIALTY
3GMetalworx.com

PROPRIETARY NOTICE: THIS DRAWING, LISTS OR SPECIFICATIONS ARE THE CONFIDENTIAL INFORMATION AND/OR TRADE SECRETS OF 3GMETALWORX INC. AND ISSUED IN STRICT CONFIDENCE. EXCEPT AS AUTHORIZED BY 3GMETALWORX IN WRITING, THESE DRAWINGS, LISTS OR SPECIFICATIONS SHALL NOT BE REPRODUCED, RETRANSMITTED, USED FOR THE DESIGN, MANUFACTURE OR SALE OF EQUIPMENT OR USED FOR ANY OTHER PURPOSE OTHER THAN EVALUATION

UNLESS OTHERWISE SPECIFIED U/M INCHES TOLERANCE ± 0.005			PART NUMBER SCLP-002-11		REV. 0
	ROHS COMPLIANT		DESCRIPTION CLIP		QE FILE 20018
CAGE CODE L 0641		DRAWN BY	DATE	19-09-04	
THIS DRAWING WAS PRODUCED USING SOLIDWORKS		CHECKED BY	SCALE	1:4	SHEET 2 OF 2