

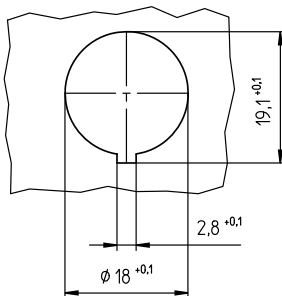
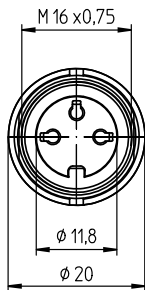
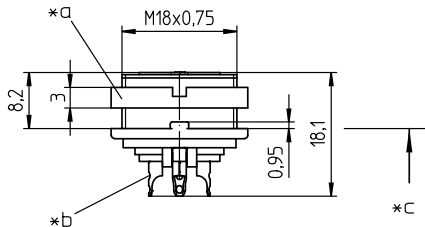
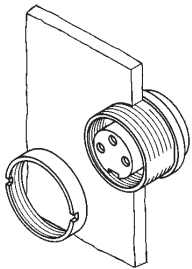
03 KGV

Circular connectors with threaded joint M16 acc. to IEC 61076-2-106, IP40/IP68



Chassis socket acc. to IEC 61076-2-106, IP40, with threaded joint and solder terminals, for back side mounting

**03 KGV**



**Environmental conditions**

Temperature range -40 °C/+85 °C

**Materials**

Insulating body PA GF, V-0 according to UL94  
 Contact bush CuZn, silver-plated and flash gold-plated (3-8 poles)  
 CuZn, pre-nickel and gold-plated (12 poles)  
 Housing Zn diecast, pre-copper and nickel-plated  
 Ring screw CuZn, nickel-plated

**Mechanical data**

Insertion force/contact ≤ 5.0 N<sup>1</sup>  
 Withdrawal force/contact ≥ 1.2 N (3-8 poles)  
 ≥ 0.9 N (12 poles)<sup>1</sup>  
 Tightening torque connector 1-3 Nm  
 Tightening torque nut 1-3 Nm  
 Protection class IP40<sup>2</sup>

<sup>1</sup> measured with a polished steel pin, nominal thickness 1.5 mm (1.0 mm with 12 poles)

<sup>2</sup> according to IEC DIN EN 60529, only in locked condition with an appropriate counterpart

**Connectable conductors for solder area**

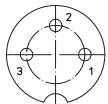
Section ≤ 0.75 mm<sup>2</sup> (AWG 20) (3-8 poles)  
 ≤ 0.25 mm<sup>2</sup> (AWG 24) (12 poles)

**Electrical data (at T<sub>amb</sub> 20 °C)**

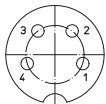
Contact resistance ≤ 5 mΩ  
 Rated current 5 A (T<sub>amb</sub> 40 °C, 3-8 poles)  
 3 A (T<sub>amb</sub> 40 °C, 12 poles)  
 Rated voltage with pollution degree 1:  
 300 V (versions 30, 40, 50/6, 60, 70)  
 100 V (versions 50, 71, 80, 81)  
 160 V (Polbild 120)  
 with pollution degree 2:  
 250 V (versions 30, 40)  
 32 V (versions 50, 71, 80, 81)  
 160 V (versions 50/6, 60, 70, 120)  
 Rated impulse voltage 1500 V (versions 30, 40, 50/6, 60, 70, 120)  
 500 V (versions 50, 71, 80, 81)  
 Material group II (IEC)/I (UL) (400 ≤ CTI < 600)  
 Overvoltage category I  
 Insulation resistance > 100 MΩ

**03 KGV**

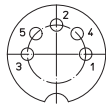
**Pin configurations, solder side view**



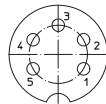
**03-a**  
**KGV 30**



**04-a**  
**KGV 40**



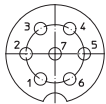
**05-b**  
**KGV 50**



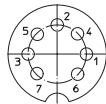
**05-a**  
**KGV 50/6**



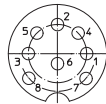
**06-a**  
**KGV 60**



**07-a**  
**KGV 70**



**07-b**  
**KGV 71**



**KGV 80**



**08-a**  
**KGV 81**



**12-a**  
**KGV 120**

- \*a nut enclosed separately
- \*b cup-shaped solder terminal
- \*c mounting direction
- \*d port in mounting plate

**Associated products**

Counterparts

- |                              |                            |                             |
|------------------------------|----------------------------|-----------------------------|
| <a href="#">☞ SV</a>         | <a href="#">☞ SV ... C</a> | <a href="#">☞ SV ...-8</a>  |
| <a href="#">☞ SV ...-8 C</a> | <a href="#">☞ WSV</a>      | <a href="#">☞ WSV ... C</a> |

Accessories

- |                        |                          |                        |
|------------------------|--------------------------|------------------------|
| <a href="#">☞ 0381</a> | <a href="#">☞ 038199</a> | <a href="#">☞ 0384</a> |
| <a href="#">☞ 0385</a> | <a href="#">☞ 038799</a> |                        |

Harnessing equipment

- [☞ ZMS 20](#)

03 KGV

Designation	Pole Number	PU (Pieces)	MDQ (Pieces)
KGV 30	3	50	100
KGV 40	4	50	100
KGV 50	5	50	100
KGV 50/6	5	50	100
KGV 60	6	50	100
KGV 70	7	50	100
KGV 71	7	50	100
KGV 80	8	50	100
KGV 81	8	50	100
KGV 120	12	50	100

**Packaging:**  
in a cardboard box