

FEATURES:

- 6 Watt SIP8 package
- 2:1 Wide Input Voltages Range
- 100% Burned In
- High Efficiency up to 86%
- Customized Solutions Available
- Remote Control: On/Off
- UL94V-0 Package Material
- UL Recognized

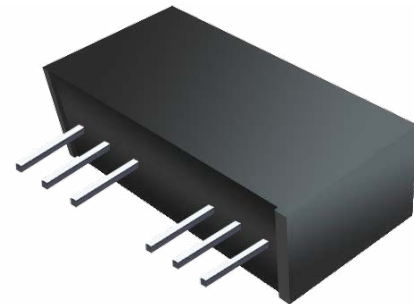
Specifications typical at TA=25°C nominal input voltage and rated output current unless otherwise specified

Part Number	Input Voltage Range	Input Current (mA TYP)		Output Voltage Range	Output Current	Efficiency
	Vdc	No Load	Full Load	Vdc	mA	%TYP
RD7-24S036R	18~36	7	255	3.3	1500	81
RD7-24S056R	18~36	7	301	5	1200	83
RD7-24S126R	18~36	7	294	12	500	85
RD7-24S156R	18~36	7	291	15	400	86
RD7-24S246R	18~36	7	294	24	250	85
RD7-12D126R	9~18	5	602	±12	±250	83
RD7-24D156R	18~36	7	298	±15	±200	84



DC-DC Converter RD7-6W Series

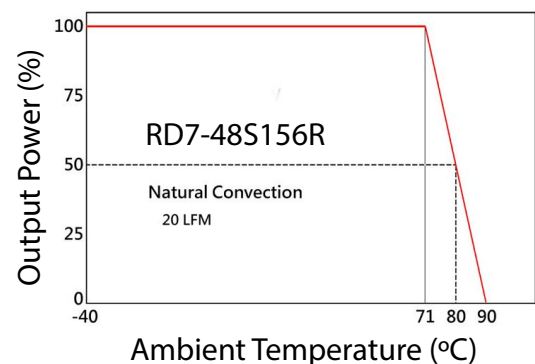
6 Watt 1.5KV Isolated
2:1 Input Voltage Range
Single & Dual Output
SIP8



Input Specifications

Parameters	Conditions	Min	Typ	Max	Units
Voltage Types	Vo, Io Nom			2:1	
Filter	Capacitor				

Temperature Derating Graph



Output Specifications

Parameters	Conditions	Min	Typ	Max	Units
Voltage Tolerance	100% full load			±2	%
Short Circuit Protection	Continuous, Auto-Recovery				
Line Regulation		-0.5		+0.5	%
Load Regulation	Single output models Dual output models (Balance Load)	-0.5 -1.0		+0.5 +1.0	%
Ripple & Noise	Output:3V-10V TYPES BW=DC To 20MHz			100	mVp-p
	Output:>10V TYPES BW=DC To 20MHz			1% of Vout	mVp-p
Transient Response Setting Time	25% load step change		250		us

Part Number

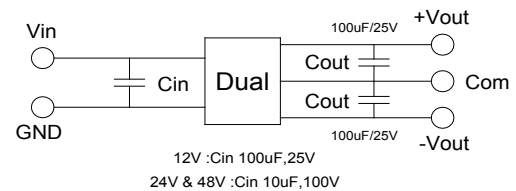
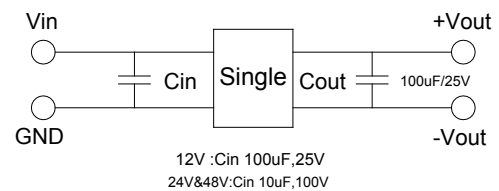
RD7 - XX X XX X X X X
A B C D E F G

A: Series
B: Input Voltage
C: Single (S) / Dual Output (D)
D: Output Voltage
E: Output Power
F: Regulated (R)
G: Isolation Voltage

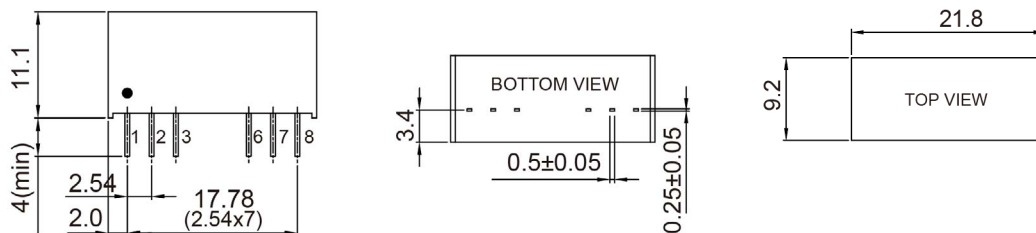
General Specifications

Parameters	Conditions	Min	Typ	Max	Units
Isolation Voltage			1500		Vdc
Isolation Resistance	500Vdc	1000			MΩ
Switching Frequency	Single Dual		400 500		KHz
Operating Temperature		-40		+85	°C
Storage Temperature		-55		+125	°C
Humidity	Non Condensing			95	%
Cooling	Natural Convection (20LFM)				
Case Material	DAP				
MTBF	MIL-HDBK-217F@25°C	1,500,000			Hours
Weight			4.5		g
Dimensions			21.8x9.2x11.1		mm

Recommended Test Circuit



Dimensions



UNIT: mm tolerances are XX.X±0.5, XX.XX±0.25, the tolerance of Pin size is ±0.05

PIN Connection

PIN	1	2	3	6	7	8
Single	-Vin	+Vin	Remote ON/OFF	+Vout	-Vout	NC
Dual	-Vin	+Vin	Remote ON/OFF	+Vout	COM	-Vout