

T-connectors with different area 25 - 500 mm² KTSF

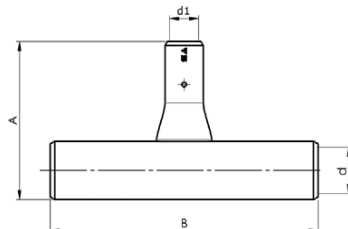
- Material: Cu 99.95%, tin plated Cu/Sn.
- Cable inspection hole.
- For winding, flexible and stranded Cu-conductors.



Marking example: Elpress Logotype

20 = Elpress Die no. 20 2x95F = 2 entries 95 mm²

F = KSF (Flexible, Stranded or Winding Conductors)



| Conductor Cu mm ² | Winding mm ² | Name | d mm | d1 | A | B | Die (Branch conductor) | Die (through conductor) | Tools | Pcs/ pack |
|---------------------------------|----------------------------|-------------|---------|------|------|-----|------------------------------|-------------------------------|-------------|--------------|
| 25-50 | 30-47, 69-103 | KTSF25-50 | 8 | 11 | 69,5 | 80 | 11L | 14,5L | V600, V1300 | 20 |
| 50-150 | 69-103, 180-220 | KTSF50-150 | 11 | 19 | 91 | 110 | 14,5L | 25L | V1300, V250 | 5 |
| 70-95 | 100-120, 113-161 | KTSF70-95 | 13 | 15 | 77 | 100 | 17L | 20L | V600, V1300 | 10 |
| 70-120 | 100-120, 145-185 | KTSF70-120 | 13 | 17 | 87 | 110 | 17L | 22L | V600, V1300 | 5 |
| 70-150 | 100-120, 180-220 | KTSF70-150 | 13 | 19 | 91 | 110 | 17L | 25L | V1300, V250 | 5 |
| 70-240 | 100-120, 302-343 | KTSF70-240 | 13 | 24 | 89 | 120 | 17L | 30L | V1300, V250 | 5 |
| 95-35 | 113-161, 45-70 | KTSF95-35 | 15 | 9 | 70 | 93 | 20L | 13L | V600, V1300 | 10 |
| 95-50 | 113-161, 69-103 | KTSF95-50 | 15 | 11 | 75 | 96 | 20L | 14,5L | V600, V1300 | 10 |
| 95-150 | 113-161, 180-220 | KTSF95-150 | 15 | 19 | 92 | 110 | 20L | 25L | V1300, V250 | 5 |
| 95-240 | 113-161, 302-343 | KTSF95-240 | 15 | 24 | 90 | 120 | 20L | 30L | V1300, V250 | 5 |
| 120-150 | 145-185, 180-220 | KTSF120-150 | 17 | 19 | 92 | 120 | 22L | 25L | V1300, V250 | 5 |
| 120-185 | 145-185, 220-265 | KTSF120-185 | 17 | 21 | 96 | 120 | 22L | 27L | V1300, V250 | 5 |
| 150-50 | 180-220, 69-103 | KTSF150-50 | 19 | 11 | 80 | 124 | 25L | 14,5L | V1300, V250 | 10 |
| 150-95 | 180-220, 113-161 | KTSF150-95 | 19 | 15 | 83 | 124 | 25L | 20L | V1300, V250 | 8 |
| 185-35 | 220-265, 45-70 | KTSF185-35 | 21 | 9 | 80 | 105 | 27L | 13L | V1300, V250 | 6 |
| 185-50 | 220-265, 69-103 | KTSF185-50 | 21 | 11 | 85 | 105 | 27L | 14,5L | V1300, V250 | 6 |
| 185-95 | 220-265, 113-161 | KTSF185-95 | 21 | 15 | 88 | 110 | 27L | 20L | V1300, V250 | 6 |
| 185-150 | 220-265, 180-220 | KTSF185-150 | 21 | 19 | 97 | 124 | 27L | 25L | V1300, V250 | 6 |
| 240-35 | 302-343, 45-70 | KTSF240-35 | 24 | 9 | 80 | 105 | 30L | 13L | V1300, V250 | 5 |
| 240-50 | 302-343, 69-103 | KTSF240-50 | 24 | 11 | 85 | 129 | 30L | 14,5L | V1300, V250 | 6 |
| 240-95 | 302-343, 113-161 | KTSF240-95 | 24 | 15 | 88 | 129 | 30L | 20L | V1300, V250 | 6 |
| 240-120 | 302-343, 145-185 | KTSF240-120 | 24 | 17 | 89 | 129 | 30L | 22L | V1300, V250 | 5 |
| 240-150 | 302-343, 180-220 | KTSF240-150 | 24 | 19 | 97 | 129 | 30L | 25L | V1300, V250 | 5 |
| 240-185 | 302-343, 220-265 | KTSF240-185 | 24 | 21 | 99 | 129 | 30L | 27L | V1300, V250 | 4 |
| 240-400 | 302-343, 412-500 | KTSF240-400 | 24 | 30 | 129 | 154 | 30L | 38L | V1300, V250 | 2 |
| 300-150 | 340-400, 180-220 | KTSF300-150 | 24,5 | 19 | 98 | 130 | 32L | 25L | V1300, V250 | 4 |
| 400-35 | 412-500, 45-70 | KTSF400-35 | 30 | 9 | 92 | 160 | 38L | 13L | V250 | 4 |
| 400-50 | 412-500, 69-103 | KTSF400-50 | 30 | 11 | 97 | 160 | 38L | 14,5L | V250 | 4 |
| 400-95 | 412-500, 113-161 | KTSF400-95 | 30 | 15 | 99 | 170 | 38L | 20L | V250 | 4 |
| 400-150 | 412-500, 180-220 | KTSF400-150 | 30 | 19 | 103 | 175 | 38L | 25L | V250 | 2 |
| 400-185 | 412-500, 220-265 | KTSF400-185 | 30 | 21 | 111 | 180 | 38L | 27L | V250 | 2 |
| 400-240 | 412-500, 302-343 | KTSF400-240 | 30 | 24 | 112 | 190 | 38L | 30L | V250 | 2 |
| 400-300 | 412-500, 340-400 | KTSF400-300 | 30 | 24,5 | 108 | 190 | 38L | 32L | V250 | 2 |
| 500-35 | 500-580, 45-70 | KTSF500-35 | 33 | 9 | 92 | 160 | 42L | 13L | V250 | 2 |
| 500-50 | 500-580, 69-103 | KTSF500-50 | 33 | 11 | 97 | 160 | 42L | 14,5L | V250 | 2 |
| 500-95 | 500-580, 113-161 | KTSF500-95 | 33 | 15 | 100 | 170 | 42L | 20L | V250 | 2 |
| 500-150 | 500-580, 180-220 | KTSF500-150 | 33 | 19 | 107 | 180 | 42L | 25L | V250 | 2 |
| 500-185 | 500-580, 220-265 | KTSF500-185 | 33 | 21 | 111 | 180 | 42L | 27L | V250 | 2 |
| 500-240 | 500-580, 302-343 | KTSF500-240 | 33 | 24 | 112 | 200 | 42L | 30L | V250 | 2 |
| 500-300 | 500-580, 340-400 | KTSF500-300 | 33 | 24,5 | 113 | 200 | 42L | 32L | V250 | 2 |
| 500-400 | 500-580, 412-500 | KTSF500-400 | 33 | 30 | 135 | 200 | 42L | 38L | V250 | 2 |

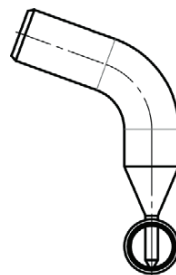
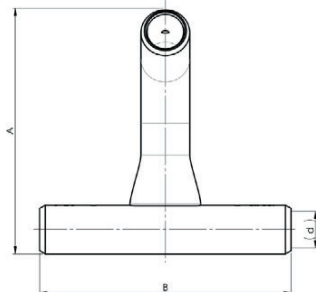


T-connectors 110°, 35 - 400 mm² KTSF

- Material: Cu 99.95%, tin plated Cu/Sn.
- Cable inspection hole.
- For winding, flexible and stranded Cu-conductors.



Marking example: 14,5 3x50F Elpress logotype included
 14,5 = die no. 3x = no. of conductor entries 50 = mm² F = type KSF



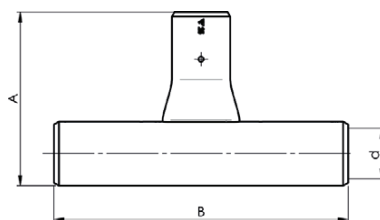
| Conductor Cu mm ² | Winding mm ² | Name | d mm | A | B | Die | Tools | Pcs/pack |
|------------------------------|-------------------------|---------------|------|------|-----|-------|-------------|----------|
| 35 | 45-70 | KTSF35-110GR | 9 | 63 | 87 | 13L | V600, V1300 | 20 |
| 50 | 69-103 | KTSF50-110GR | 11 | 66 | 96 | 14,5L | V600, V1300 | 20 |
| 70 | 100-120 | KTSF70-110GR | 13 | 80 | 100 | 17L | V600, V1300 | 10 |
| 95 | 113-161 | KTSF95-110GR | 15 | 84,5 | 103 | 20L | V600, V1300 | 6 |
| 120 | 145-185 | KTSF120-110GR | 17 | 91 | 120 | 22L | V600, V1300 | 6 |
| 150 | 180-220 | KTSF150-110GR | 19 | 104 | 124 | 25L | V1300, V250 | 4 |
| 185 | 220-265 | KTSF185-110GR | 21 | 112 | 124 | 27L | V1300, V250 | 2 |
| 240 | 302-343 | KTSF240-110GR | 24 | 116 | 129 | 30L | V1300, V250 | 2 |
| 300 | 340-400 | KTSF300-110GR | 24,5 | 119 | 130 | 32L | V1300, V250 | 2 |
| 400 | 412-500 | KTSF400-110GR | 30 | 177 | 190 | 38L | V250 | 3 |

T-connectors 35 - 630 mm² KTSF

- Material: Cu 99.95%, tin plated Cu/Sn.
- Cable inspection hole. For Cu-conductors; flexible, stranded and winding.



Marking example: 14,5 3x50F Elpress logotype included
 14,5 = die no. 3x = no. of conductor entries 50 = mm²
 F = type KSF, flexible, stranded and winding conductors



| Conductor Cu mm ² | Winding mm ² | Name | d mm | A | B | Die | Tools | Pcs/pack |
|------------------------------|-------------------------|---------|------|-------|-----|-------|-------------|----------|
| 35 | 45-70 | KTSF35 | 9 | 63 | 87 | 13L | V600, V1300 | 20 |
| 50 | 69-103 | KTSF50 | 11 | 70 | 96 | 14,5L | V600, V1300 | 20 |
| 70 | 100-120 | KTSF70 | 13 | 74 | 100 | 17L | V600, V1300 | 10 |
| 95 | 113-161 | KTSF95 | 15 | 77 | 103 | 20L | V600, V1300 | 10 |
| 120 | 145-185 | KTSF120 | 17 | 87,5 | 120 | 22L | V600, V1300 | 6 |
| 150 | 180-220 | KTSF150 | 19 | 92 | 124 | 25L | V1300, V250 | 6 |
| 185 | 220-265 | KTSF185 | 21 | 96 | 124 | 27L | V1300, V250 | 6 |
| 240 | 302-343 | KTSF240 | 24 | 100 | 129 | 30L | V1300, V250 | 4 |
| 300 | 340-400 | KTSF300 | 24,5 | 101,5 | 130 | 32L | V1300, V250 | 4 |
| 400 | 412-500 | KTSF400 | 30 | 130 | 190 | 38L | V250 | 2 |
| 500 | 500-580 | KTSF500 | 33 | 134,5 | 200 | 42L | V250 | 2 |
| 630 | 630-730 | KTSF630 | 39 | 168 | 235 | 50L | V250 | 2 |