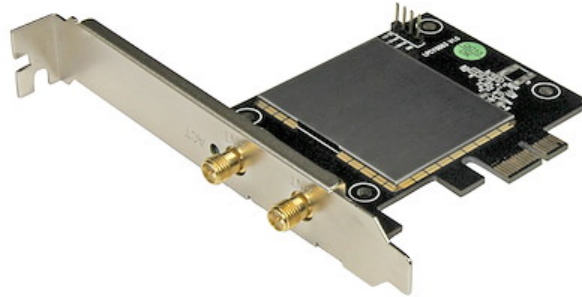


## AC600 Wireless-AC Network Adapter - 802.11ac, PCI Express - TAA

**Product ID:** PEX433WAC11



Upgrade your desktop PC or server to powerful 802.11ac wireless networking. This AC600 network card fits easily into a PCI Express expansion slot to give you dual-band wireless-AC connectivity with speeds up to 433 Mbps.

This wireless-AC adapter lets you add dual-band wireless-AC connectivity to a desktop computer through a PCIe slot. Ideal for your office or home environment, the PCIe Wi-Fi adapter provides a wireless range of up to 100 feet (30m), when paired with an 802.11ac router. It's a cost-effective solution for adding or upgrading to the latest 802.11ac dual-band wireless networking.

The Wi-Fi adapter supports data rates of up to 433 Mbps at 5 GHz, and 150 Mbps at 2.4 GHz. Two detachable external antennas enhance reception and provide more reliable connections.

The versatile USB Wi-Fi adapter gives you dual-band 2.4/5 GHz support, so you can connect easily to the less congested 5GHz wireless network to enjoy lag-free HD video streaming, online gaming, file transfers or other bandwidth-intensive applications. The WMM Quality of Service (QoS) feature quickly prioritizes video streams, Internet calls and online gaming.

This network adapter has a 1T1R (1 transmitter, 1 receiver) antenna design and features two detachable external antennas (dual-band 3dBi). To integrate easily with all of your networking devices, the wireless network adapter is backward compatible with 802.11a/b/g/n networks.

The network card is easy to install in the PCI Express slot on your standard or small form-factor computer. It comes equipped with a standard profile bracket, and includes a low-profile bracket that you can swap in to mount the card in smaller or space-constrained systems.

The PEX433WAC11 is backed by a StarTech.com 2-year warranty and free lifetime technical support.

## Certifications, Reports and Compatibility



## Applications

- Replace or upgrade the wireless capabilities of your desktop computer or server, at home or in the office
- Connect to the less congested 5 GHz Wi-Fi band to avoid interference from common wireless devices such as cordless phones
- Get faster wireless performance for smoother online conferencing, quicker file transfers, and lag-free HD video streaming or gaming

## Features

- Wireless AC600 compatible with speeds up 433Mbps (5GHz) and up to 150Mbps (2.4GHz)
- Dual band 2.4 / 5GHz support (802.11ac is 5 GHz only)
- Compliant with 802.11 ac/a/b/g/n networks
- Single antenna (1T1R) for transmitting and receiving
- Dual external (detachable) dual-band 3dBi antennas
- PCI Express host interface
- Wireless security with 64/128bit WEP, WPA, WPA2 and TKIP/AES
- Supports WMM Quality of Service and WMM-PS
- Supports Soft AP mode
- Configured with standard profile bracket, low profile and half-height bracket included

---

### Hardware

Warranty	2 Years
Interface	Wireless Ethernet
Bus Type	PCI Express
Card Type	Standard Profile (LP bracket incl.)

Antenna Configuration	1T1R
Industry Standards	IEEE 802.11ac, IEEE 802.11n, IEEE 802.11g, IEEE 802.11a, IEEE 802.11b
Chipset ID	Realtek - 8821AE

#### Performance

Maximum Data Transfer Rate	433 Mbps (5 GHz)
	150 Mbps (2.4 GHz)
Max Distance	30 m / 100 ft
Bandwidth	20/40/80 MHz
Auto MDIX	No
Full Duplex Support	No
Frequency Range	2.412~2.462 GHz, 5.180~5.825 GHz
Frequency	2.4G/5.8G-Dual band
Security Features	WEP Data Encryption
	WPA and WPA2-PSK Data Encryption
	TKIP/AES

#### Connector(s)

Connector Type(s)	1 - PCI Express x1
	2 - RP-SMA (Coax, Reverse Polarity SubMiniature A)

#### Software

OS Compatibility	Windows 11, 10 (32/64bit), 8 / 8.1 (32/64), 7 (32/64), XP(32/64) Windows Server 2012, 2008 R2,
------------------	---

#### Special Notes / Requirements

System and Cable Requirements	Available PCI express expansion slot
-------------------------------	--------------------------------------

#### Indicators

LED Indicators	1 - Link/Activity
----------------	-------------------

## Environmental

Operating Temperature	0C to 60C (32F to 140F)
Storage Temperature	10C to 70C (50F to 158F)
Humidity	0% ~ 90% RH

## Physical Characteristics

Color	Black
Material	Steel
Product Length	4.8 in [12.1 cm]
Product Width	3.8 in [9.7 cm]
Product Height	0.9 in [2.2 cm]
Weight of Product	1.7 oz [49 g]

## Packaging Information

Package Quantity	1
Package Length	6.4 in [16.2 cm]
Package Width	5.5 in [14 cm]
Package Height	1.3 in [3.4 cm]
Shipping (Package) Weight	5.6 oz [160.0 g]

## What's in the Box

Included in Package	1 - PCI Express AC600 Wireless-AC network adapter
	2 - detachable external antenna
	1 - driver CD
	1 - low profile bracket
	1 - quick start guide

***\*Product appearance and specifications are subject to change without notice.***