

2J0B15-C885G

868/915 MHz ISM Connector Mount

Key Features

868/915 MHz ISM

- 863-870 MHz

- 902-928 MHz

Connector Mount

Low Profile

Ground Plane Dependent

Dimensions 48 x Ø 9 mm



1. Antenna and electrical specifications

Parameters	868/915 MHz ISM Antenna	
Standards	ZigBee, ISM, SIGFOX, LoRa	
Band (MHz)	868	915
Frequency (MHz)	863-870	902-928
Return Loss (dB)	~-7.8	~-8.0
VSWR	~2.4:1	~2.4:1
Efficiency (%)	~66.1	~75.2
Peak Gain (dBi)	~2.7	~3.3
Average Gain (dB)	~-1.8	~-1.2
Impedance (Ohm)	50	
Polarisation	Linear	
Radiation Pattern	Omni-Directional	
Max. Input Power (W)	25	
Connector Type	SMA-Male Standard	

Antenna Measurement Conditions:

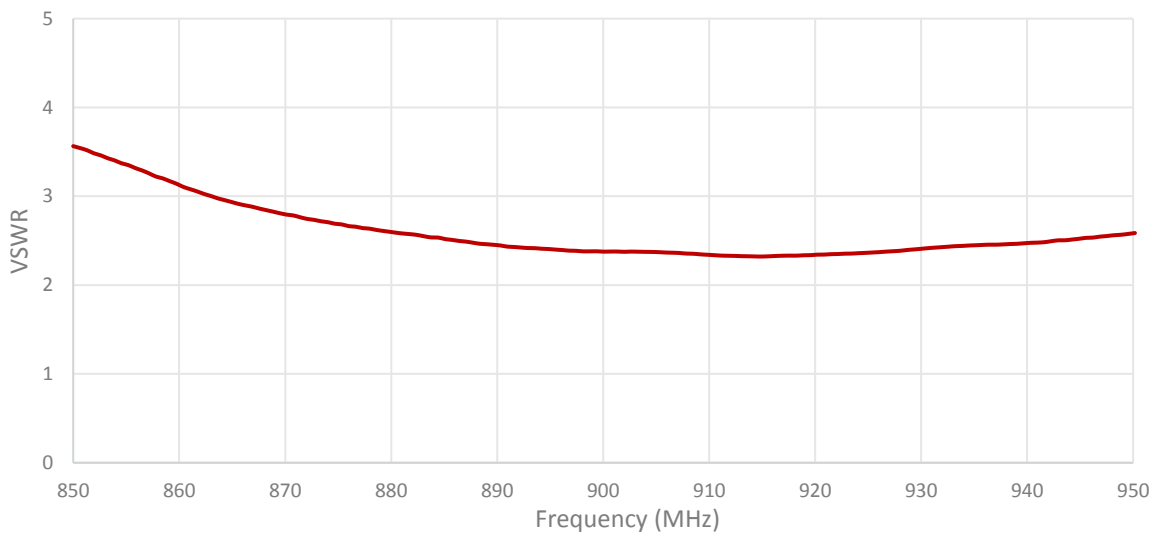
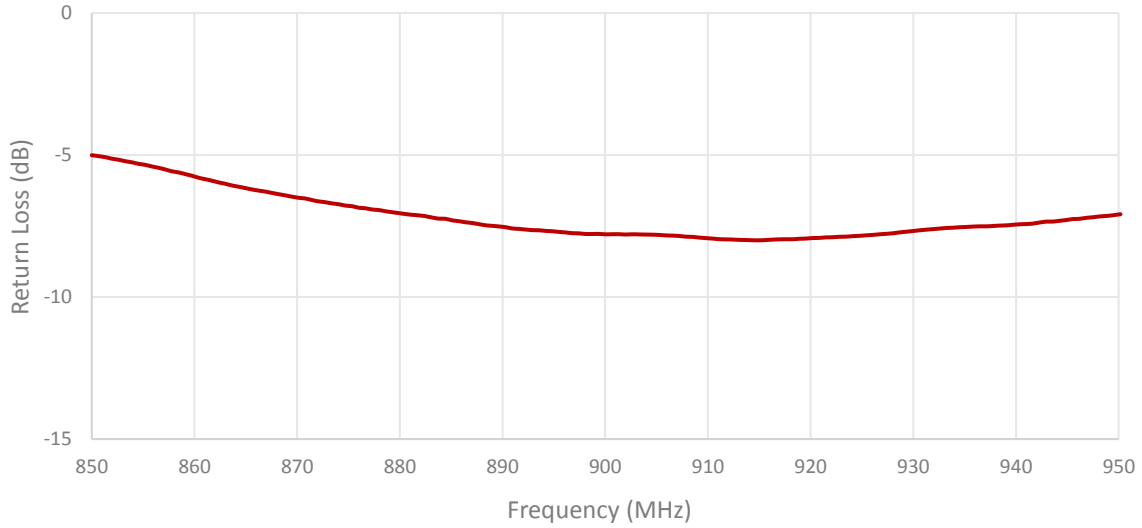
Mounted on Ground Plane of 95 x 40 mm

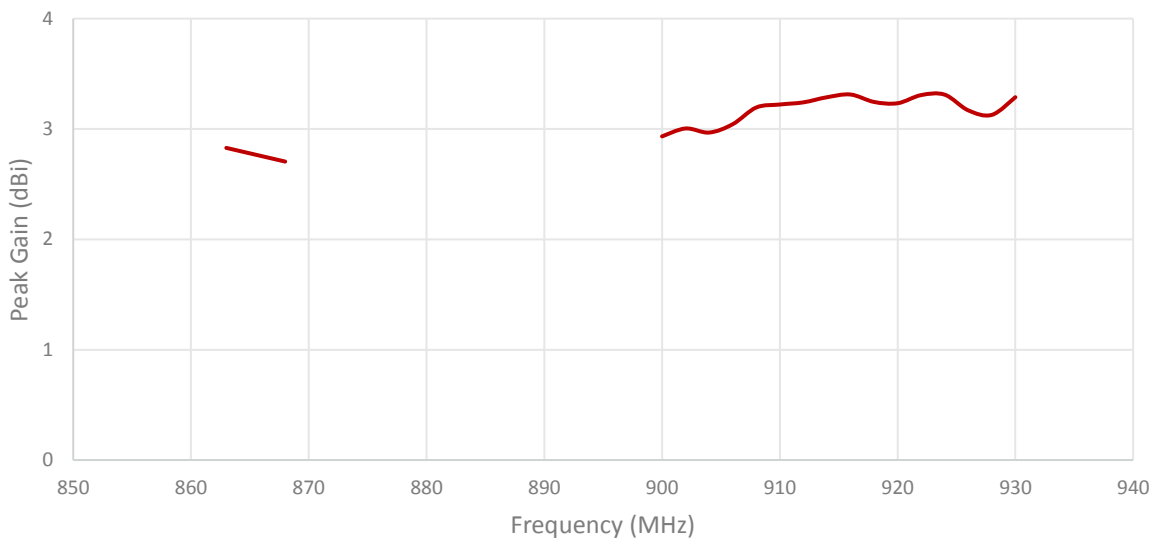
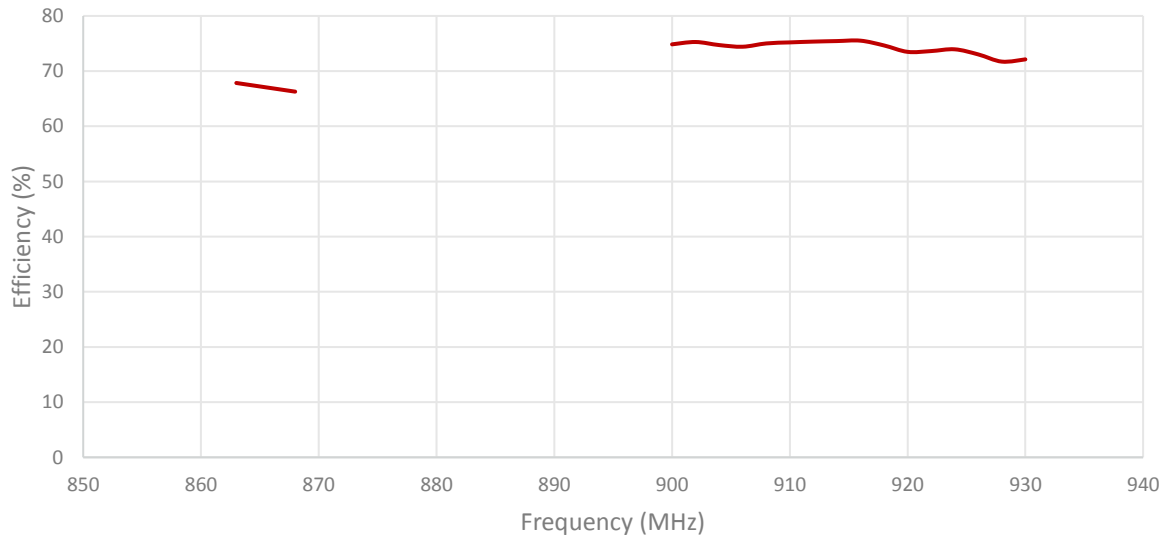
Measured in Certified CTIA 3D Anechoic Chamber

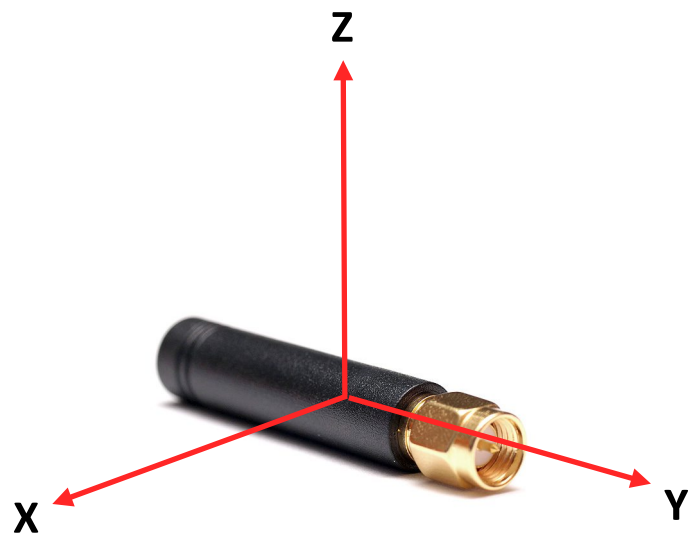
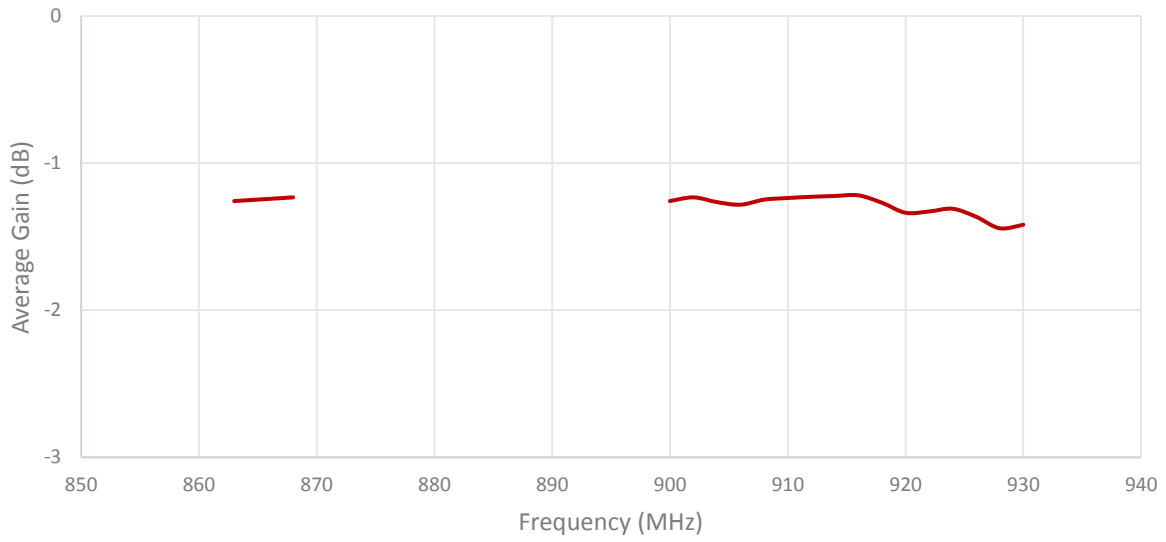
2. Mechanical and environmental specifications

Specifications	2J0B15-C885G
Mounting Type	Connector Mount
Dimensions (mm)	48 x Ø 9
Radome	TPC-ET
Radome color	Black
Operating Temperature (C)	-40 to +85
Storage Temperature (C)	-40 to +85
Substance Compliance	RoHS

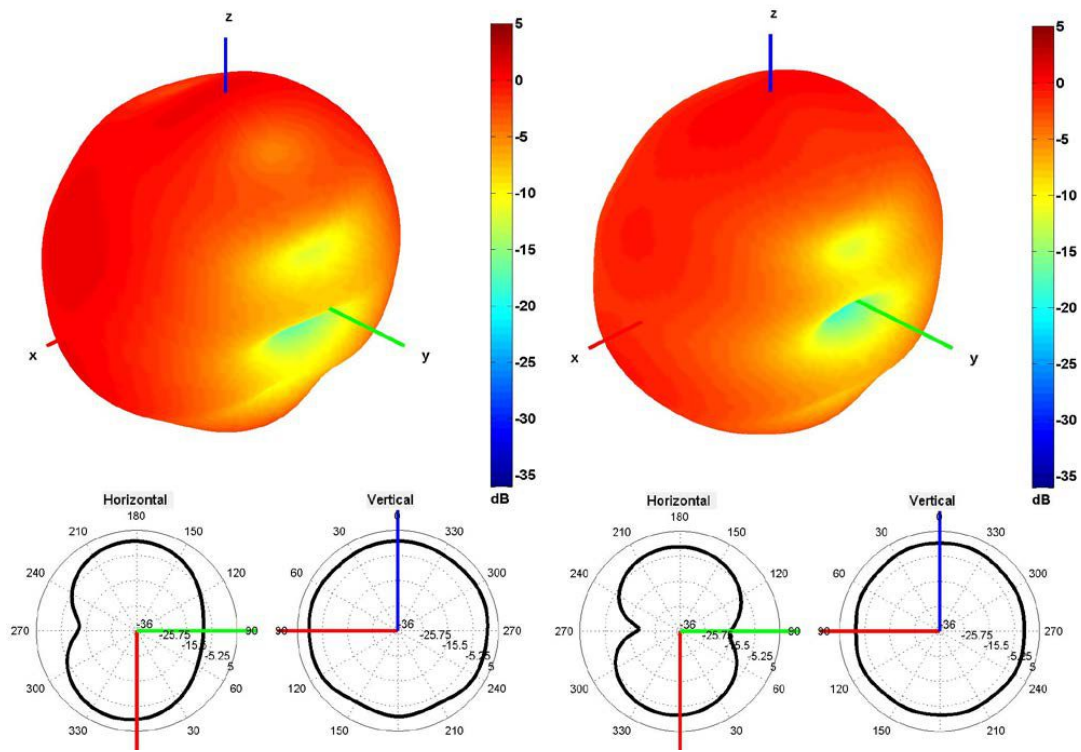
3. Antenna parameters





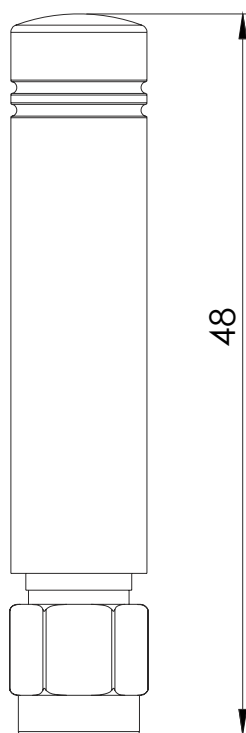
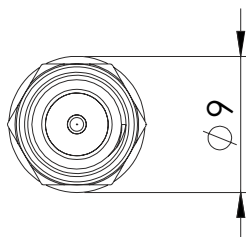


Radiation pattern reference



868 and 915 MHz Radiation pattern

4. Antenna drawings



5. Antenna Images

