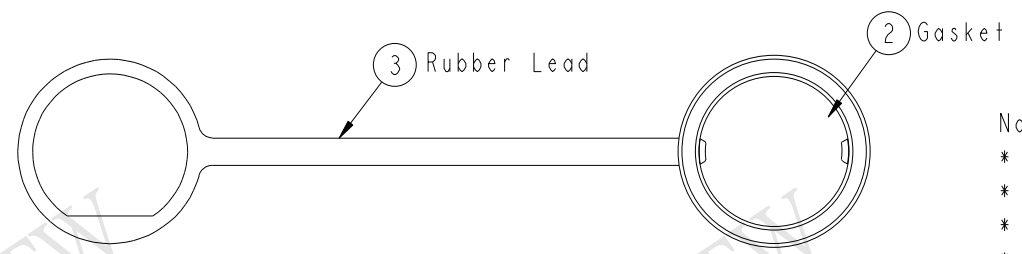
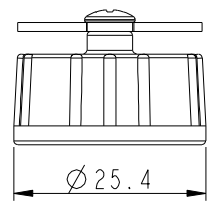
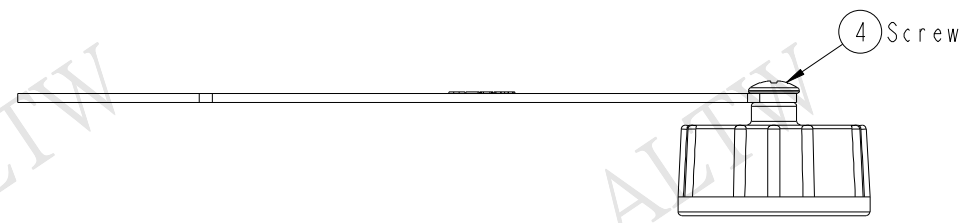
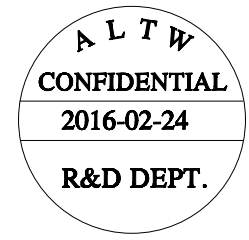
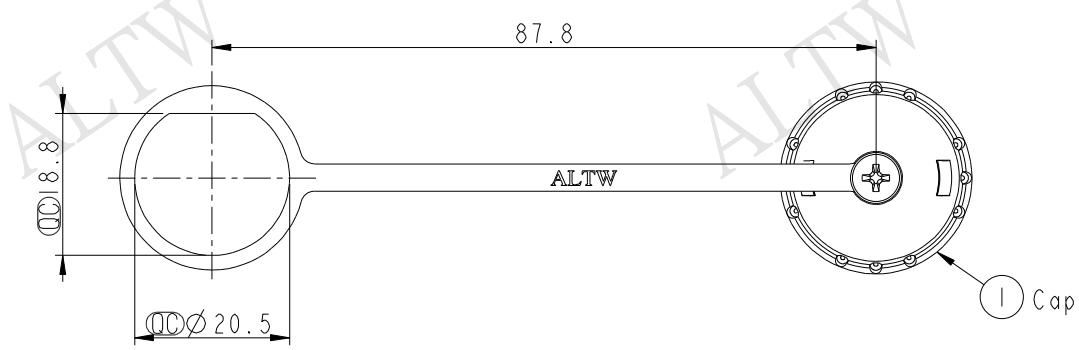


THIS DOCUMENT IS SUBJECT TO CHANGE WITHOUT NOTICE. IT IS CONFIDENTIAL AND A PROPERTY OF AMPHENOL LTW. DISCLOSURE TO THIRD PARTY HAS TO BE AUTHORIZED BY AMPHENOL LTW.

REV.	ECN NO.	DATE	SIGN	DESCRIPTION



- Note:
- * ⌀ Important Dimension.
 - * Waterproof Rate: IP67
 - * Cap: M-PPE, Black
 - * Gasket: Silicone, Black
 - * Rubber Lead: TPES, Black
 - * Screw is not allowed to tight (Chain be revolve)
不可將螺絲鎖緊, (鏈條要可旋轉)

UNIT: mm		
TOLERANCE		
.X	±0.25	
.XX	±0.1	
.XXX	±0.05	
ANGLES	±1°	

TITLE Waterproof Cap, Between C&D Size			
SCALE 1:1	SIZE A4	SHEET 1 OF 1	
REV. A	WC-REV. A.1	⌀ : Inspection item	

Amphenol LTW
安費諾亮泰企業股份有限公司

ITEM NO CAP-WCCMLPCI	DRAWN BY Cary	DATE 2016-02-24
DWG NO CAP-WCCMLPCI	CHECKED BY Feng_Li	DATE 2016-02-24
CUSTOMER ALTW	APPROVED BY Jerry	DATE 2016-02-24

ALTW

A B C D E F