

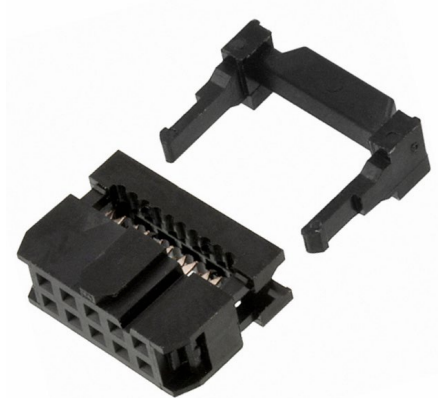
## 10-Way IDC Connector Socket for Cable Mount, 2-Row

RoHS  
Compliant

Stock No.: D2553WVC-210-P0BKG1

### FEATURES

- 10 Ways
- 2 Rows
- 2.54mm Pitch



### Product Description

This cable mount IDC ribbon cable receptacle connectors come with a 2.54mm pitch. These wire to board IDC 2.54mm ribbon cable receptacle connectors have a black PBT insulator, gold plated copper alloy female socket contacts, a polarizing key and are supplied with additional strain reliefs.

### General Specifications

<b>Connector Type</b>	Jack
<b>Number of Contacts</b>	10
<b>Number of Rows</b>	2
<b>Gender</b>	Female
<b>Body Orientation</b>	Straight
<b>Contact Material</b>	Phosphor Bronze
<b>Housing Material</b>	PBT
<b>Colour</b>	Black
<b>Applications</b>	computers connecting drives, cd drives, SSD's and other components

### Electrical Specifications

<b>Current Rating</b>	3A
<b>Voltage Rating</b>	AC 1000V
<b>Proof Voltage</b>	1000VDC or AC peak
<b>Termination Method</b>	IDC
<b>Contact Plating</b>	Gold over Nickel Plated
<b>Cable</b>	2.54mm (0.10in) pitch flat cable
<b>Insulator Resistance</b>	1000MOhm min. at DC 500V
<b>Contact Resistance</b>	20MOhm max. at DC 100mA
<b>Dielectric Withstanding Voltage</b>	1000VAC for 1 Minute
<b>Connector System</b>	Wire to Board

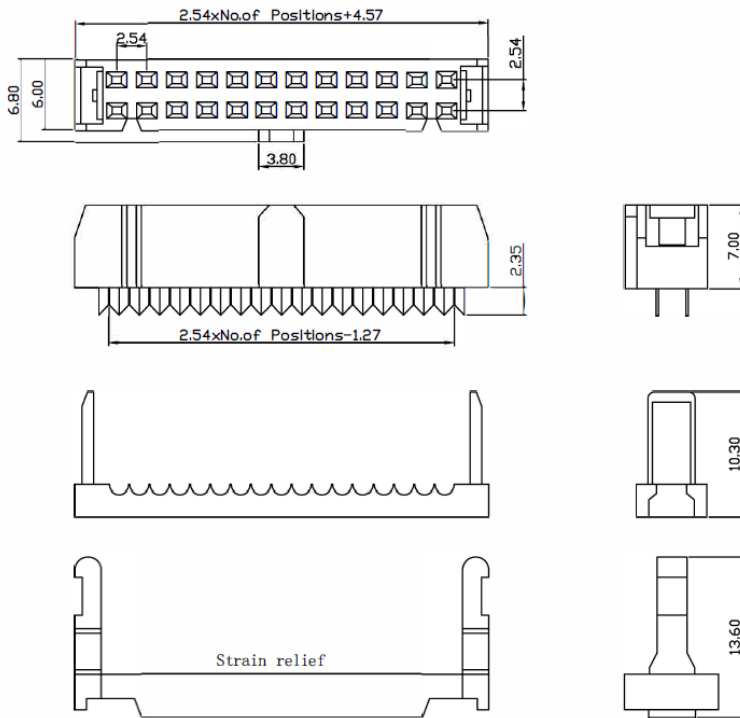
## Mechanical Specifications

<b>Pitch</b>	2.54mm
<b>Mounting Type</b>	Cable Mount
<b>Ejector Style</b>	Short latches
<b>Length</b>	17.27mm
<b>Width</b>	7.0mm

## Operation Environment Specifications

<b>Operating Temperature Range</b>	-40°C to 105°C
<b>Minimum Operating Temperature</b>	-40°C
<b>Maximum Operating Temperature</b>	105°C

## Product Drawing



**SPECIFICATION:**  
 Current Rating: 3 A.  
 Withstanding Voltage: AC 1000V.  
 Insulation Resistance: 1000MΩ Min  
 Contact Resistance: 20mΩ Max..  
 Operating Temperature: -40°C ~ +105°C.

**Material:**  
 Insulator: PBT+30% Glass Fiber (UL94V-0).  
 Contact: Phosphor Bronz  
 Contact Plated: Gold over Nickel Plated.

**D2553 W V C- 2NP - P0 BK X 1**  
 ① ② ③ ④ ⑤ ⑥ ⑦ ⑧

- ① Series No.
- ② Category: W-Wafer
- ③ Welding Board Angle: V- Straight 180°
- ④ Feature Type: Blank-Normal type, A-A type, B type, C-C type
- ⑤ Circuit No.: 210-2x5PIN~264-2x32PIN,
- ⑥ Material: P0-PBT, UL94V-0
- ⑦ Color: BK-Black
- ⑧ Plating Method: T-Tin-plated, G-Gold-plated,
- ⑨ Options: 1- 3 pieces

Dimensions: Millimeters (Inches)

## Part Number Table

Part Number	Description
D2553WVC-210-P0BKG1	10-Way IDC Connector Socket for Cable Mount, 2-Row

Important Notice: This data sheet and its contents (the "Information") belong to the members of the EASE group of companies (the "Group") or are licensed to it. No license is granted for the use of it other than for information purposes in connection with the products to which it relates. No license of any intellectual property rights is granted. The Information is subject to change without notice and replaces all data sheets previously supplied. The Information supplied is believed to be accurate, but the Group assumes no responsibility for its accuracy or completeness, any error in or omission from it or for any use made of it. Users of this data sheet should check for themselves the Information and the suitability of the products for their purpose and not make any assumptions based on information included or omitted. Liability for loss or damage resulting from any reliance on the Information or use of it (including liability resulting from negligence or where the Group was aware of the possibility of such loss or damage arising) is excluded. This will not operate to limit or restrict the Group's liability for death or personal injury resulting from its negligence. EASE is the registered trademark of Ease Electronics Co., Limited 2019.