

## D SUB HD FE CRIMP SHELL 15P

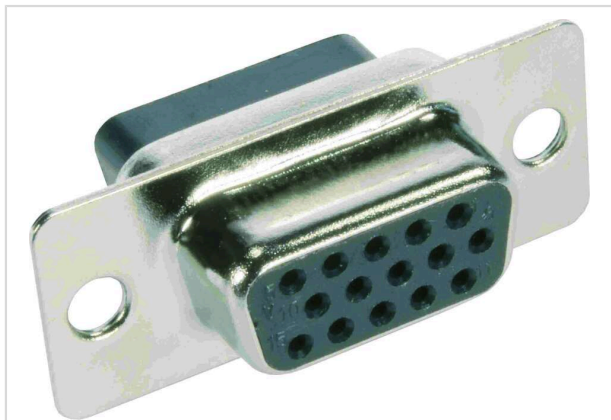


Image is for illustration purposes only. Please refer to product description.

Part number	09 56 100 4701
Specification	D SUB HD FE CRIMP SHELL 15P
HARTING eCatalogue	<a href="https://b2b.harting.com/09561004701">https://b2b.harting.com/09561004701</a>

### Identification

Category	Connectors
Series	D-Sub
Identification	High Density
Element	Connector

### Version

Termination method	Crimp termination
Gender	Female
Size	D-Sub 1
Number of contacts	15
Locking type	Fixing flange with feed through hole Ø 3.1 mm
Details	Please order crimp contacts separately.

### Technical characteristics

Conductor cross-section	0.14 ... 0.25 mm <sup>2</sup>
Conductor cross-section	AWG 26 ... AWG 24
Wire outer diameter	≤1.38 mm
Clearance distance	≥1 mm
Creepage distance	≥1 mm
Insulation resistance	> 5 x 10 <sup>9</sup> Ω
Limiting temperature	-40 ... +85 °C
Test voltage U <sub>r.m.s.</sub>	1 kV
Isolation group	IIIa (175 ≤ CTI < 400)



Pushing Performance  
Since 1945

## Technical characteristics

Hot plugging	No
--------------	----

## Material properties

Material (insert)	Thermoplastic resin, glass-fibre filled (PBTP) Shell: steel, nickel plated
Colour (insert)	Black
Material flammability class acc. to UL 94	V-0
RoHS	compliant
ELV status	compliant
China RoHS	e
REACH Annex XVII substances	Not contained
REACH ANNEX XIV substances	Not contained
REACH SVHC substances	Not contained
California Proposition 65 substances	Yes
California Proposition 65 substances	Lead
Fire protection on railway vehicles	EN 45545-2 (2020-08)
Requirement set with Hazard Levels	R26

## Specifications and approvals

Specifications	DIN 41652
----------------	-----------

## Commercial data

Packaging size	100
Net weight	1 g
Country of origin	China
European customs tariff number	85366990
GTIN	5713140071148
ETIM	EC001136
eCl@ss	27440214 D-Sub coupler