

SPECIFICATIONS:

MATERIALS:

HOUSING: PA66, UL94 V-0, BLACK
 CONTACTS: GOLD FLASH PLATED BRASS
 NUT: NICKEL PLATED BRASS
 SHELL: NICKEL PLATED BRASS
 ORING: EPDM

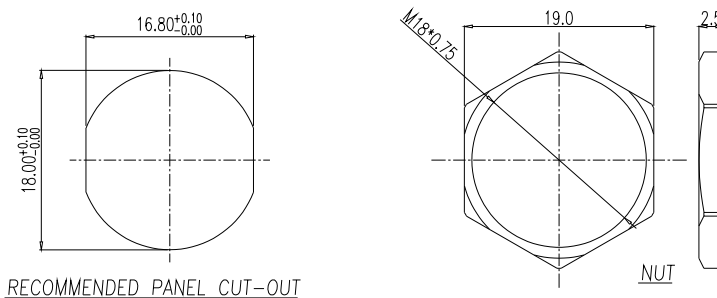
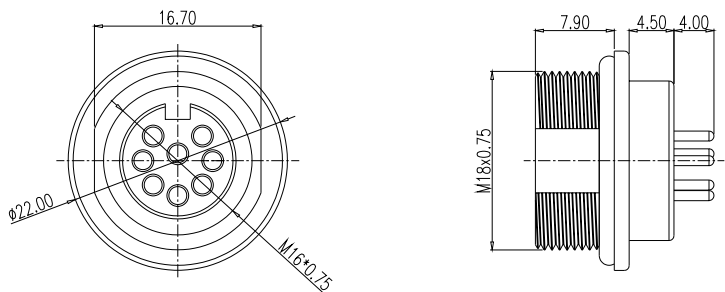
ELECTRICAL:

RATED CURRENT: 7A (3,4,5A,5B) // 5A (6,7A,7B,8)
 RATED VOLTAGE: 250V
 INSULATION RESISTANCE: 100 MOhms MIN.
 CONTACT RESISTANCE: 10 mOhms MAX.

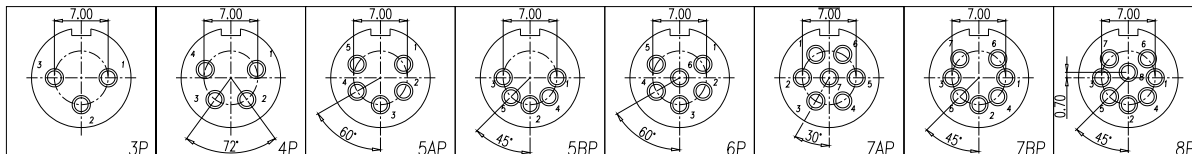
ENVIRONMENT:

OPERATING TEMPERATURE: -40°C TO +85°C
 WATER PROOF: IP67

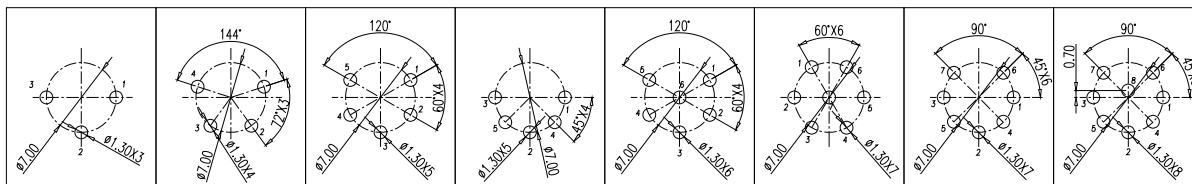
TORQUE: 0.7Nm to 1.5Nm



RECOMMENDED PANEL CUT-OUT



POSITION CHART (MATING SIDE SHOWN)



RECOMMENDED PCB LAYOUT // ALL PCB HOLE SIZES 1.30mm+0.10mm/-0.00mm

880-YYY-213R001

POSITIONS (SEE POSITION CHART)

- 003 = 3 POSITION
- 004 = 4 POSITION
- 05A = 5(A) POSITION
- 05B = 5(B) POSITION
- 006 = 6 POSITION
- 07A = 7(A) POSITION
- 07B = 7(B) POSITION
- 008 = 8 POSITION

RoHS COMPLIANT

UNITS = mm

DO NOT SCALE FROM DRAWING



THESE DRAWINGS AND SPECIFICATIONS ARE THE PROPERTY OF NorComp AND SHALL NOT BE REPRODUCED, COPIED OR USED AS THE BASIS FOR THE MANUFACTURE OR SALE OF APPARATUS WITHOUT WRITTEN PERMISSION.

DRAWN:

J. KADEL

DATE:

09/05/2023

NorComp

SCALE: NTS

SHEET 1 OF 1

REV 3

DWG NO.

880-YYY-213R001