



Sensors > Vibration Sensors

Accelerometer Type: **IEPE**Vibration Sensor Product Type: **Piezoelectric Accelerometer**Number of Sensing Axes: **Uniaxial**Frequency Response: **1 to 8000 Hz**Full Scale Output Voltage: **±5 VDC**

Features

Product Type Features

Sensor Package	Embedded
Accelerometer Type	IEPE
Vibration Sensor Product Type	Piezoelectric Accelerometer

Electrical Characteristics

Excitation Current	2 - 10 mA
Full Scale Output Voltage	±5 VDC

Signal Characteristics

Frequency Response	1 to 8000 Hz
--------------------	--------------

Body Features

Primary Product Material	Stainless Steel
Product Weight	5 g [.17 oz]
Number of Sensing Axes	Uniaxial

Mechanical Attachment

Sensor Mount Type	Screw Mount
-------------------	-------------

Usage Conditions

Operating Temperature Range	-40 - 100 °C [-40 - 212 °F]
-----------------------------	-----------------------------

Operation/Application

Output Current Type	AC
---------------------	----

Other

Non-Linearity (FSO)	±1 %
---------------------	------

Acceleration Range (±)	500 g
------------------------	-------

Sensitivity	10 mV/g
-------------	---------

Product Compliance

[For compliance documentation, visit the product page on TE.com>](#)

EU RoHS Directive 2011/65/EU	Compliant
------------------------------	-----------

EU ELV Directive 2000/53/EC	Not Yet Reviewed
-----------------------------	------------------

China RoHS 2 Directive MIIT Order No 32, 2016	No Restricted Materials Above Threshold
---	---

EU REACH Regulation (EC) No. 1907/2006	Current ECHA Candidate List: JAN 2024 (240) Candidate List Declared Against: JUN 2020 (209) Does not contain REACH SVHC
--	---

Halogen Content	Not Yet Reviewed for halogen content
-----------------	--------------------------------------

Solder Process Capability	Not reviewed for solder process capability
---------------------------	--

Product Compliance Disclaimer

This information is provided based on reasonable inquiry of our suppliers and represents our current actual knowledge based on the information they provided. This information is subject to change. The part numbers that TE has identified as EU RoHS compliant have a maximum concentration of 0.1% by weight in homogenous materials for lead, hexavalent chromium, mercury, PBB, PBDE, DBP, BBP, DEHP, DIBP, and 0.01% for cadmium, or qualify for an exemption to these limits as defined in the Annexes of Directive 2011/65/EU (RoHS2). Finished electrical and electronic equipment products will be CE marked as required by Directive 2011/65/EU. Components may not be CE marked. Additionally, the part numbers that TE has identified as EU ELV compliant have a maximum concentration of 0.1% by weight in homogenous materials for lead, hexavalent chromium, and mercury, and 0.01% for cadmium, or qualify for an exemption to these limits as defined in the Annexes of Directive 2000/53/EC (ELV). Regarding the REACH Regulation, the information TE provides on SVHC in articles for this part number is based on the latest European Chemicals Agency (ECHA) 'Guidance on requirements for substances in articles' posted at this URL: <https://echa.europa.eu/guidance-documents/guidance-on-reach>

Compatible Parts





Also in the Series | MEAS 805

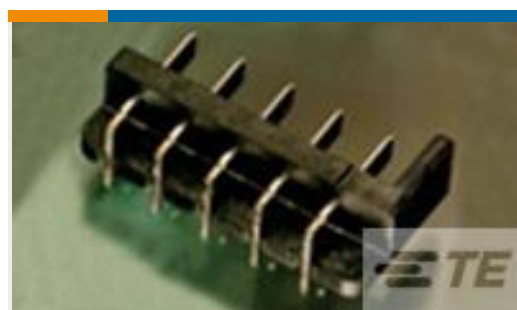


Vibration Sensors(13)

Customers Also Bought



TE Part # 1-1123722-6
3.96 EP PLUG HSG 6P(NATURAL)



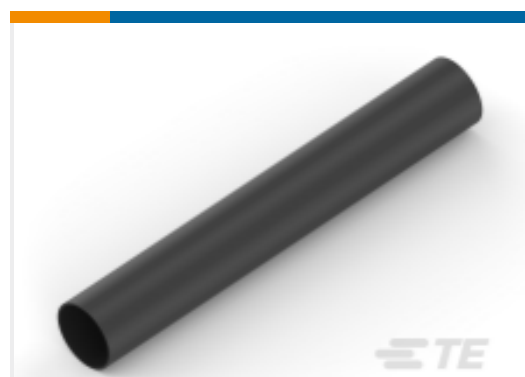
TE Part # 5787428-1
HDR ASY,RA,LKEY,STR TAIL,12.0V



TE Part # 7-1879135-9
RN 0603 7R68 0.1% 10PPM 5K RL



TE Part # 1-2176326-3
CRGP 0603 100R 1%



TE Part # NB08866001
ATUM-12/3-0-1IN



TE Part # 10220579-00
PRESS XDCR M5253-100005-10KPS

Documents

CAD Files

3D PDF

3D

Customer View Model

[ENG_CVM_CVM_805-0500-01_H.2d_dxf.zip](#)

English

Customer View Model

[ENG_CVM_CVM_805-0500-01_H.3d_igs.zip](#)

English

Customer View Model

[ENG_CVM_CVM_805-0500-01_H.3d_stp.zip](#)

English

By downloading the CAD file I accept and agree to the [Terms and Conditions](#) of use.

Datasheets & Catalog Pages



[805_Accelerometer](#)

English