

PTRVB 8-FI /BU - Potential distributors



3270225

<https://www.phoenixcontact.com/us/products/3270225>

Please be informed that the data shown in this PDF document is generated from our online catalog. Please find the complete data in the user documentation. Our general terms of use for downloads are valid.



Potential distributors, with option to supply up to 6 mm², nom. voltage: 250 V, nominal current: 17.5 A, connection method: Push-in connection, Rated cross section: 1.5 mm², cross section: 0.14 mm² - 2.5 mm², Feed-in stage, Rated cross section: 4 mm², cross section: 0.2 mm² - 6 mm², mounting: NS 35/7,5, NS 35/15, color: gray, color of connection elements: blue

Your advantages

- High contact quality thanks to push-in technology as a replacement for Wire-Wrap®, TERMI-POINT®, etc.
- Bridgeable potential distributor with option to supply up to 6 mm²
- Tool-free wiring in a confined space thanks to compact size
- Distributor terminal block in blue for 24 V DC power supplies

Commercial data

Item number	3270225
Packing unit	10 pc
Minimum order quantity	10 pc
Sales key	BE62
Product key	BE6211
Catalog page	Page 52 (C-1-2019)
GTIN	4055626239767
Weight per piece (including packing)	46.77 g
Weight per piece (excluding packing)	46.77 g
Customs tariff number	85369010
Country of origin	PL

Technical data

Product properties

Product type	Potential distributor
Number of positions	2
Number of connections	29
Number of rows	8
Potentials	1

Insulation characteristics

Overvoltage category	III
----------------------	-----

Electrical properties

Rated surge voltage	4 kV
Maximum power dissipation for nominal condition	0.56 W

Connection data

Service Entrance	yes
Number of connections per level	4
Nominal cross section	1.5 mm ²

Level 1+2+3+4+5+6 above 1

Stripping length	8 mm ... 10 mm
Connection in acc. with standard	IEC 60947-7-1
Conductor cross section rigid	0.14 mm ² ... 2.5 mm ²
Cross section AWG	26 ... 14 (converted acc. to IEC)
Conductor cross section flexible	0.14 mm ² ... 1.5 mm ²
Conductor cross section, flexible [AWG]	26 ... 16 (converted acc. to IEC)
Conductor cross-section flexible (ferrule without plastic sleeve)	0.14 mm ² ... 1.5 mm ²
Flexible conductor cross section (ferrule with plastic sleeve)	0.14 mm ² ... 1.5 mm ²
Nominal current	17.5 A (with 1.5 mm ² conductor cross section)
Maximum load current	24 A (per chamber with 2.5 mm ² conductor cross section)
Maximum total current	37 A (per potential distributor)
Nominal voltage	250 V
Nominal cross section	1.5 mm ²

Feed-in stage

Note	Only the "CRIMPFOX 6" crimping pliers may be used for crimping with 6 mm ² stranded and ferrule.
Stripping length	10 mm ... 12 mm
Connection in acc. with standard	IEC 60947-7-1
Conductor cross section rigid	0.2 mm ² ... 6 mm ²
Cross section AWG	24 ... 10 (converted acc. to IEC)
Conductor cross section flexible	0.2 mm ² ... 6 mm ²
Conductor cross section, flexible [AWG]	24 ... 10 (converted acc. to IEC)

PTRVB 8-FI /BU - Potential distributors



3270225

<https://www.phoenixcontact.com/us/products/3270225>

Conductor cross-section flexible (ferrule without plastic sleeve)	0.2 mm ² ... 6 mm ²
Flexible conductor cross section (ferrule with plastic sleeve)	0.2 mm ² ... 6 mm ²
Nominal current	32 A (Supply, for 4 mm ² conductor cross section)
Maximum load current	37 A (Service Entrance)
Nominal voltage	250 V
Nominal cross section	4 mm ²

Level 1+2+3+4+5+6 above 1 Connection cross sections directly pluggable

Conductor cross section rigid	0.34 mm ² ... 2.5 mm ²
Conductor cross section, rigid [AWG]	20 ... 14 (converted acc. to IEC)
Conductor cross-section flexible (ferrule without plastic sleeve)	0.34 mm ² ... 1.5 mm ²
Flexible conductor cross section (ferrule with plastic sleeve)	0.34 mm ² ... 1.5 mm ²

Feed-in stage Connection cross sections directly pluggable

Conductor cross section rigid	0.34 mm ² ... 6 mm ²
Conductor cross section, rigid [AWG]	24 ... 10 (converted acc. to IEC)
Conductor cross-section flexible (ferrule without plastic sleeve)	0.34 mm ² ... 6 mm ²
Flexible conductor cross section (ferrule with plastic sleeve)	0.34 mm ² ... 6 mm ²

Dimensions

Width	8.3 mm
Height	100 mm
Depth on NS 35/7,5	87.5 mm
Depth on NS 35/15	95 mm

Material specifications

Color	gray
Color of connection elements	blue
Flammability rating according to UL 94	V0
Insulating material group	I
Insulating material	PA
Static insulating material application in cold	-60 °C
Temperature index of insulation material (DIN EN 60216-1 (VDE 0304-21))	125 °C
Relative insulation material temperature index (Elec., UL 746 B)	130 °C
Fire protection for rail vehicles (DIN EN 45545-2) R22	HL 1 - HL 3
Fire protection for rail vehicles (DIN EN 45545-2) R23	HL 1 - HL 3
Fire protection for rail vehicles (DIN EN 45545-2) R24	HL 1 - HL 3
Fire protection for rail vehicles (DIN EN 45545-2) R26	HL 1 - HL 3
Calorimetric heat release NFPA 130 (ASTM E 1354)	27,5 MJ/kg
Surface flammability NFPA 130 (ASTM E 162)	passed
Specific optical density of smoke NFPA 130 (ASTM E 662)	passed
Smoke gas toxicity NFPA 130 (SMP 800C)	passed

Electrical tests

PTRVB 8-FI /BU - Potential distributors



3270225

<https://www.phoenixcontact.com/us/products/3270225>

Surge voltage test

Test voltage setpoint	4.8 kV
Result	Test passed

Temperature-rise test

Requirement temperature-rise test	Increase in temperature ≤ 45 K
Result	Test passed
Short-time withstand current 1.5 mm ²	0.18 kA
Short-time withstand current 2.5 mm ²	0.3 kA
Short-time withstand current 4 mm ²	0.48 kA
Short-time withstand current 6 mm ²	0.72 kA
Result	Test passed

Power-frequency withstand voltage

Test voltage setpoint	1.5 kV
Result	Test passed

Mechanical properties

Mechanical data

Open side panel	Yes
-----------------	-----

Mechanical tests

Mechanical strength

Result	Test passed
--------	-------------

Attachment on the carrier

DIN rail/fixing support	NS 35
Test force setpoint	1 N
Result	Test passed

Test for conductor damage and slackening

Rotation speed	10 rpm
Revolutions	135
Conductor cross section/weight	0.14 mm ² / 0.2 kg
	1.5 mm ² / 0.4 kg
	2.5 mm ² / 0.7 kg
Result	Test passed

Environmental and real-life conditions

Aging

Temperature cycles	192
Result	Test passed

Needle-flame test

Time of exposure	30 s
------------------	------

PTRVB 8-FI /BU - Potential distributors



3270225

<https://www.phoenixcontact.com/us/products/3270225>

Result	Test passed
--------	-------------

Oscillation/broadband noise

Specification	DIN EN 50155 (VDE 0115-200):2008-03
Spectrum	Service life test category 2, bogie-mounted
Frequency	$f_1 = 5 \text{ Hz}$ to $f_2 = 250 \text{ Hz}$
ASD level	6.12 (m/s ²)/Hz
Acceleration	3.12g
Test duration per axis	5 h
Test directions	X-, Y- and Z-axis
Result	Test passed

Shocks

Specification	DIN EN 50155 (VDE 0115-200):2008-03
Pulse shape	Half-sine
Acceleration	30g
Shock duration	18 ms
Number of shocks per direction	3
Test directions	X-, Y- and Z-axis (pos. and neg.)
Result	Test passed

Ambient conditions

Ambient temperature (operation)	-60 °C ... 105 °C (max. short-term operating temperature RTI Elec.)
Ambient temperature (storage/transport)	-25 °C ... 60 °C (for a short time, not exceeding 24 h, -60 °C to +70 °C)
Ambient temperature (assembly)	-5 °C ... 70 °C
Ambient temperature (actuation)	-5 °C ... 70 °C
Permissible humidity (storage/transport)	30 % ... 70 %

Standards and regulations

Connection in acc. with standard	IEC 60947-7-1
	IEC 60947-7-1

Mounting

Mounting type	NS 35/7,5
	NS 35/15

PTRVB 8-FI /BU - Potential distributors

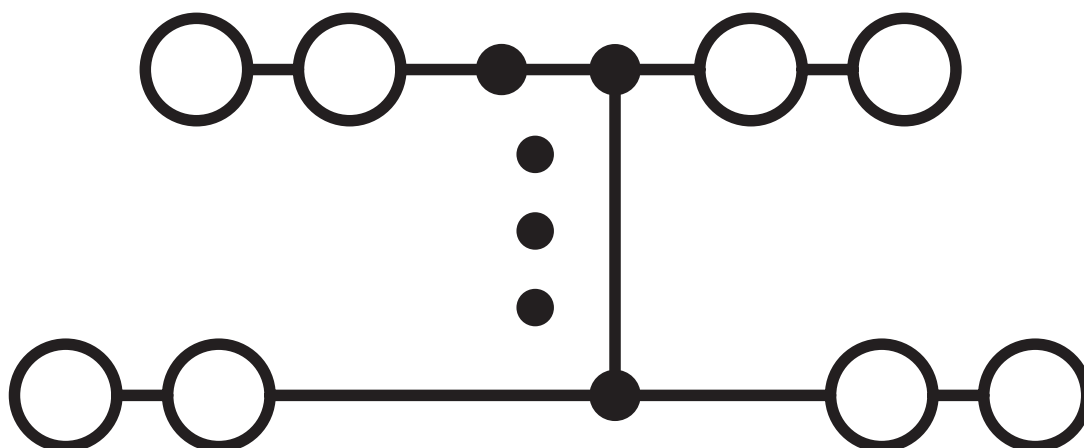


3270225

<https://www.phoenixcontact.com/us/products/3270225>

Drawings

Circuit diagram



PTRVB 8-FI /BU - Potential distributors



3270225

<https://www.phoenixcontact.com/us/products/3270225>

Approvals

To download certificates, visit the product detail page: <https://www.phoenixcontact.com/us/products/3270225>



CSA

Approval ID: 2030668

PTRVB 8-FI /BU - Potential distributors



3270225

<https://www.phoenixcontact.com/us/products/3270225>

Classifications

ECLASS

ECLASS-11.0	27141120
ECLASS-13.0	27250105

ETIM

ETIM 9.0	EC000897
----------	----------

UNSPSC

UNSPSC 21.0	39121400
-------------	----------

PTRVB 8-FI /BU - Potential distributors



3270225

<https://www.phoenixcontact.com/us/products/3270225>

Environmental product compliance

EU RoHS

Fulfills EU RoHS substance requirements	Yes, No exemptions
---	--------------------

China RoHS

Environment friendly use period (EFUP)	EFUP-E
	No hazardous substances above the limits

EU REACH SVHC

REACH candidate substance (CAS No.)	No substance above 0.1 wt%
-------------------------------------	----------------------------

PTRVB 8-FI /BU - Potential distributors

3270225

<https://www.phoenixcontact.com/us/products/3270225>

Accessories

 Note: Applying some accessories below might limit this product.


FBST 500-PLC RD - Continuous plug-in bridge

2966786

<https://www.phoenixcontact.com/us/products/2966786>



Continuous plug-in bridge, length: 500 mm, color: red

 Max. current carrying capacity: 32 A

FBST 500-PLC GY - Continuous plug-in bridge

2966838

<https://www.phoenixcontact.com/us/products/2966838>



Continuous plug-in bridge, length: 500 mm, color: gray

 Max. current carrying capacity: 32 A

PTRVB 8-FI /BU - Potential distributors

3270225

<https://www.phoenixcontact.com/us/products/3270225>

FBST 500-PLC BN - Continuous plug-in bridge

2967976

<https://www.phoenixcontact.com/us/products/2967976>



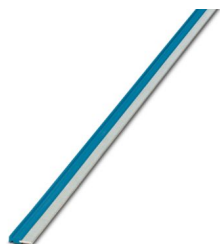
Continuous plug-in bridge, length: 500 mm, color: brown

 Max. current carrying capacity: 32 A

FBST 500-PLC BU - Continuous plug-in bridge

2966692

<https://www.phoenixcontact.com/us/products/2966692>



Continuous plug-in bridge, length: 500 mm, color: blue

 Max. current carrying capacity: 32 A

PTRVB 8-FI /BU - Potential distributors

3270225

<https://www.phoenixcontact.com/us/products/3270225>

DP-PTRV 8 - Spacer plate

3270166

<https://www.phoenixcontact.com/us/products/3270166>



Spacer plate, depth: 86 mm, width: 8.3 mm, height: 100 mm, color: gray

CDC-PTRV - Retaining bracket

3270167

<https://www.phoenixcontact.com/us/products/3270167>



Retaining bracket, via four PTRV single modules, pitch: 8.3 mm, depth: 71.5 mm, width: 35.6 mm, height: 71.5 mm, color: gray

PTRVB 8-FI /BU - Potential distributors

3270225

<https://www.phoenixcontact.com/us/products/3270225>



RPS - Reducing plug

0201647

<https://www.phoenixcontact.com/us/products/0201647>



Reducing plug, number of positions: 1, color: gray

FBST 50-PLC RD - Plug-in bridge

1081050

<https://www.phoenixcontact.com/us/products/1081050>



Plug-in bridge, length: 50 mm, color: red

PTRVB 8-FI /BU - Potential distributors

3270225

<https://www.phoenixcontact.com/us/products/3270225>

FBST 50-PLC BU - Plug-in bridge

1081051

<https://www.phoenixcontact.com/us/products/1081051>



Plug-in bridge, length: 50 mm, color: blue

FBST 50-PLC GY - Plug-in bridge

1081053

<https://www.phoenixcontact.com/us/products/1081053>



Plug-in bridge, length: 50 mm, color: gray

PTRVB 8-FI /BU - Potential distributors

3270225

<https://www.phoenixcontact.com/us/products/3270225>

ZB 8,3:UNBEDRUCKT - Zack marker strip

0803444

<https://www.phoenixcontact.com/us/products/0803444>



Zack marker strip, Strip, white, unlabeled, can be labeled with: PLOTMARK, CMS-P1-PLOTTER, mounting type: snapped, for terminal block width: 8.3 mm, lettering field size: 10.5 x 8.3 mm

ZB 8,3,LGS:FORTL.ZAHLEN - Zack marker strip

0803480

<https://www.phoenixcontact.com/us/products/0803480>



Zack marker strip, Strip, white, labeled, can be labeled with: CMS-P1-PLOTTER, mounting type: snapped, for terminal block width: 8.3 mm, lettering field size: 10.5 x 8.3 mm

PTRVB 8-FI /BU - Potential distributors

3270225

<https://www.phoenixcontact.com/us/products/3270225>

ZB 8,3,QR:FORTL.ZAHLEN - Zack marker strip

0803479

<https://www.phoenixcontact.com/us/products/0803479>

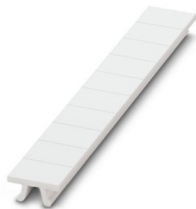


Zack marker strip, Strip, white, labeled, can be labeled with: CMS-P1-PLOTTER, mounting type: snapped, for terminal block width: 8.3 mm, lettering field size: 10.5 x 8.3 mm

ZB 8,3 CUS - Zack marker strip

8191573

<https://www.phoenixcontact.com/us/products/8191573>



Zack marker strip, Strip, white, labeled according to customer specifications, mounting type: snap into tall marker groove, for terminal block width: 8.3 mm, lettering field size: 10.5 x 8.3 mm

PTRVB 8-FI /BU - Potential distributors

3270225

<https://www.phoenixcontact.com/us/products/3270225>

TM-PTRV 8,QR:1-8 - Marker for terminal blocks

0803468

<https://www.phoenixcontact.com/us/products/0803468>



Marker for terminal blocks, white, labeled, mounting type: snapped, for terminal block width: 8 mm, lettering field size: 2.4 x 9.2 mm, Number of individual labels: 2

TM-PTRV 8,QR:8-1 - Marker for terminal blocks

0803470

<https://www.phoenixcontact.com/us/products/0803470>



Marker for terminal blocks, white, labeled, mounting type: snapped, for terminal block width: 8 mm, lettering field size: 2.4 x 9.2 mm

PTRVB 8-FI /BU - Potential distributors

3270225

<https://www.phoenixcontact.com/us/products/3270225>

TM-PTRV 8,QR:A-H - Marker for terminal blocks

0803471

<https://www.phoenixcontact.com/us/products/0803471>



Marker for terminal blocks, white, labeled, mounting type: snapped, for terminal block width: 8 mm, lettering field size: 2.4 x 9.2 mm

TM-PTRV 8,QR:H-A - Marker for terminal blocks

0803473

<https://www.phoenixcontact.com/us/products/0803473>



Marker for terminal blocks, white, labeled, mounting type: snapped, for terminal block width: 8 mm, lettering field size: 2.4 x 9.2 mm, Number of individual labels: 8

PTRVB 8-FI /BU - Potential distributors



3270225

<https://www.phoenixcontact.com/us/products/3270225>

D-PTRV 8 WH - End cover

3270154

<https://www.phoenixcontact.com/us/products/3270154>



End cover, depth: 80.8 mm, width: 3.8 mm, height: 100 mm, color: white

D-PTRV 8 WH 1-8 - End cover

3270155

<https://www.phoenixcontact.com/us/products/3270155>



End cover, depth: 80.8 mm, width: 2.2 mm, height: 100 mm, color: white

PTRVB 8-FI /BU - Potential distributors



3270225

<https://www.phoenixcontact.com/us/products/3270225>

D-PTRV 8 WH 1-8 LGS - End cover

3270240

<https://www.phoenixcontact.com/us/products/3270240>



End cover, depth: 80.8 mm, width: 2.2 mm, height: 100 mm, color: white

D-PTRV 8 WH 8-1 - End cover

3270242

<https://www.phoenixcontact.com/us/products/3270242>



End cover, depth: 80.8 mm, width: 2.2 mm, height: 100 mm, color: white

PTRVB 8-FI /BU - Potential distributors

3270225

<https://www.phoenixcontact.com/us/products/3270225>

D-PTRV 8 WH 8-1 LGS - End cover

3270244

<https://www.phoenixcontact.com/us/products/3270244>



End cover, depth: 80.8 mm, width: 2.2 mm, height: 100 mm, color: white

D-PTRV 8 WH 1-16 - End cover

3270228

<https://www.phoenixcontact.com/us/products/3270228>



End cover, depth: 80.8 mm, width: 2.2 mm, height: 100 mm, color: white

PTRVB 8-FI /BU - Potential distributors

3270225

<https://www.phoenixcontact.com/us/products/3270225>

D-PTRV 8 WH 1-16 LGS - End cover

3270229

<https://www.phoenixcontact.com/us/products/3270229>



End cover, depth: 80.8 mm, width: 2.2 mm, height: 100 mm, color: white

D-PTRV 8 WH 9-16 - End cover

3270211

<https://www.phoenixcontact.com/us/products/3270211>



End cover, depth: 80.8 mm, width: 2.2 mm, height: 100 mm, color: white

PTRVB 8-FI /BU - Potential distributors

3270225

<https://www.phoenixcontact.com/us/products/3270225>

D-PTRV 8 WH 9-16 LGS - End cover

3270212

<https://www.phoenixcontact.com/us/products/3270212>



End cover, depth: 80.8 mm, width: 2.2 mm, height: 100 mm, color: white

D-PTRV 8 WH 17-24 - End cover

3270213

<https://www.phoenixcontact.com/us/products/3270213>



End cover, depth: 80.8 mm, width: 2.2 mm, height: 100 mm, color: white

PTRVB 8-FI /BU - Potential distributors

3270225

<https://www.phoenixcontact.com/us/products/3270225>

D-PTRV 8 WH 17-24 LGS - End cover

3270214

<https://www.phoenixcontact.com/us/products/3270214>



End cover, depth: 80.8 mm, width: 2.2 mm, height: 100 mm, color: white

D-PTRV 8 WH 25-32 - End cover

3270215

<https://www.phoenixcontact.com/us/products/3270215>



End cover, depth: 80.8 mm, width: 2.2 mm, height: 100 mm, color: white

PTRVB 8-FI /BU - Potential distributors



3270225

<https://www.phoenixcontact.com/us/products/3270225>

D-PTRV 8 WH 25-32 LGS - End cover

3270216

<https://www.phoenixcontact.com/us/products/3270216>



End cover, depth: 80.8 mm, width: 2.2 mm, height: 100 mm, color: white

D-PTRV 8 WH A-H - End cover

3270156

<https://www.phoenixcontact.com/us/products/3270156>



End cover, depth: 80.8 mm, width: 2.2 mm, height: 100 mm, color: white

PTRVB 8-FI /BU - Potential distributors



3270225

<https://www.phoenixcontact.com/us/products/3270225>

D-PTRV 8 WH A-H LGS - End cover

3270241

<https://www.phoenixcontact.com/us/products/3270241>



End cover, depth: 80.8 mm, width: 2.2 mm, height: 100 mm, color: white

D-PTRV 8 WH H-A - End cover

3270243

<https://www.phoenixcontact.com/us/products/3270243>



End cover, depth: 80.8 mm, width: 2.2 mm, height: 100 mm, color: white

PTRVB 8-FI /BU - Potential distributors



3270225

<https://www.phoenixcontact.com/us/products/3270225>

D-PTRV 8 WH H-A LGS - End cover

3270245

<https://www.phoenixcontact.com/us/products/3270245>



End cover, depth: 80.8 mm, width: 2.2 mm, height: 100 mm, color: white

NS 35/ 7,5 PERF 2000MM - DIN rail perforated

0801733

<https://www.phoenixcontact.com/us/products/0801733>



DIN rail perforated, Pack of 25 (50 m), acc. to EN 60715, material: Steel, galvanized, passivated with a thick layer, Standard profile, color: silver

PTRVB 8-FI /BU - Potential distributors

3270225

<https://www.phoenixcontact.com/us/products/3270225>

NS 35/ 7,5 UNPERF 2000MM - DIN rail, unperforated

0801681

<https://www.phoenixcontact.com/us/products/0801681>



DIN rail, unperforated, Pack of 25 (50 m), acc. to EN 60715, material: Steel, galvanized, passivated with a thick layer, Standard profile, color: silver

NS 35/ 7,5 WH PERF 2000MM - DIN rail perforated

1204119

<https://www.phoenixcontact.com/us/products/1204119>



DIN rail perforated, Pack of 25 (50 m), acc. to EN 60715, material: Steel, Galvanized, white passivated, Standard profile, color: silver

PTRVB 8-FI /BU - Potential distributors

3270225

<https://www.phoenixcontact.com/us/products/3270225>

NS 35/ 7,5 WH UNPERF 2000MM-VPE 10 - DIN rail, unperforated

1204122

<https://www.phoenixcontact.com/us/products/1204122>



DIN rail, unperforated, Pack of 10 (20 m), acc. to EN 60715, material: Steel, Galvanized, white passivated, Standard profile, color: silver

NS 35/ 7,5 AL UNPERF 2000MM - DIN rail, unperforated

0801704

<https://www.phoenixcontact.com/us/products/0801704>



DIN rail, unperforated, Pack of 25 (50 m), acc. to EN 60715, material: Aluminum, uncoated, Standard profile, color: silver

PTRVB 8-FI /BU - Potential distributors

3270225

<https://www.phoenixcontact.com/us/products/3270225>

NS 35/ 7,5 ZN PERF 2000MM - DIN rail perforated

1206421

<https://www.phoenixcontact.com/us/products/1206421>



DIN rail perforated, Pack of 25 (50 m), acc. to EN 60715, material: Steel, galvanized, Standard profile, color: silver

NS 35/ 7,5 ZN UNPERF 2000MM - DIN rail, unperforated

1206434

<https://www.phoenixcontact.com/us/products/1206434>



DIN rail, unperforated, Pack of 25 (50 m), acc. to EN 60715, material: Steel, galvanized, Standard profile, color: silver

PTRVB 8-FI /BU - Potential distributors



3270225

<https://www.phoenixcontact.com/us/products/3270225>

NS 35/ 7,5 CU UNPERF 2000MM-VPE 10 - DIN rail, unperforated

0801762

<https://www.phoenixcontact.com/us/products/0801762>



DIN rail, unperforated, Pack of 10 (20 m), acc. to EN 60715, material: Copper, uncoated, Standard profile, color: copper-colored

NS 35/ 7,5 CAP - End cap

1206560

<https://www.phoenixcontact.com/us/products/1206560>

DIN rail end piece, for DIN rail NS 35/7.5



PTRVB 8-FI /BU - Potential distributors

3270225

<https://www.phoenixcontact.com/us/products/3270225>

CLIPFIX 35 - End bracket

3022218

<https://www.phoenixcontact.com/us/products/3022218>



Quick mounting end clamp for NS 35/7,5 DIN rail or NS 35/15 DIN rail, with marking option, width: 9.5 mm, color: gray

CLIPFIX 35-5 - End bracket

3022276

<https://www.phoenixcontact.com/us/products/3022276>



Quick mounting end clamp for NS 35/7,5 DIN rail or NS 35/15 DIN rail, with marking option, with parking option for FBS...5, FBS...6, KSS 5, KSS 6, width: 5.15 mm, color: gray

PTRVB 8-FI /BU - Potential distributors

3270225

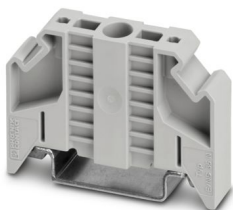
<https://www.phoenixcontact.com/us/products/3270225>

E/NS 35 N - End bracket

0800886

<https://www.phoenixcontact.com/us/products/0800886>

End clamp, width: 9.5 mm, color: gray



E/UK - End bracket

1201442

<https://www.phoenixcontact.com/us/products/1201442>

End bracket, Mounting on a DIN rail NS 32 or NS 35, material: PA, color: gray



PTRVB 8-FI /BU - Potential distributors



3270225

<https://www.phoenixcontact.com/us/products/3270225>

E/UK 1 - End bracket

1201413

<https://www.phoenixcontact.com/us/products/1201413>



End clamps, for supporting the ends of double-level and three-level terminal blocks, width: 10 mm, color: gray

MPS-MT - Test plug

0201744

<https://www.phoenixcontact.com/us/products/0201744>



Test plug, with solder connection up to 1 mm² conductor cross section, number of positions: 1, color: gray

PTRVB 8-FI /BU - Potential distributors



3270225

<https://www.phoenixcontact.com/us/products/3270225>

MPS-IH WH - Insulating sleeve

0201663

<https://www.phoenixcontact.com/us/products/0201663>

Insulating sleeve, color: white



MPS-IH RD - Insulating sleeve

0201676

<https://www.phoenixcontact.com/us/products/0201676>

Insulating sleeve, color: red



PTRVB 8-FI /BU - Potential distributors



3270225

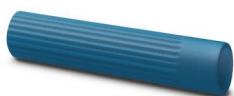
<https://www.phoenixcontact.com/us/products/3270225>

MPS-IH BU - Insulating sleeve

0201689

<https://www.phoenixcontact.com/us/products/0201689>

Insulating sleeve, color: blue



MPS-IH YE - Insulating sleeve

0201692

<https://www.phoenixcontact.com/us/products/0201692>

Insulating sleeve, color: yellow



PTRVB 8-FI /BU - Potential distributors



3270225

<https://www.phoenixcontact.com/us/products/3270225>

MPS-IH GN - Insulating sleeve

0201702

<https://www.phoenixcontact.com/us/products/0201702>

Insulating sleeve, color: green



MPS-IH GY - Insulating sleeve

0201728

<https://www.phoenixcontact.com/us/products/0201728>

Insulating sleeve, color: gray



PTRVB 8-FI /BU - Potential distributors



3270225

<https://www.phoenixcontact.com/us/products/3270225>

MPS-IH BK - Insulating sleeve

0201731

<https://www.phoenixcontact.com/us/products/0201731>

Insulating sleeve, color: black



ST-BW 0 - Actuation tool

1200135

<https://www.phoenixcontact.com/us/products/1200135>

Actuation tool, for all 1.5 mm² spring cages from PT 1,5/S and FT 1,5/S



Phoenix Contact 2024 © - all rights reserved
<https://www.phoenixcontact.com>

Phoenix Contact USA
586 Fulling Mill Road
Middletown, PA 17057, United States
(+717) 944-1300
info@phoenixcon.com