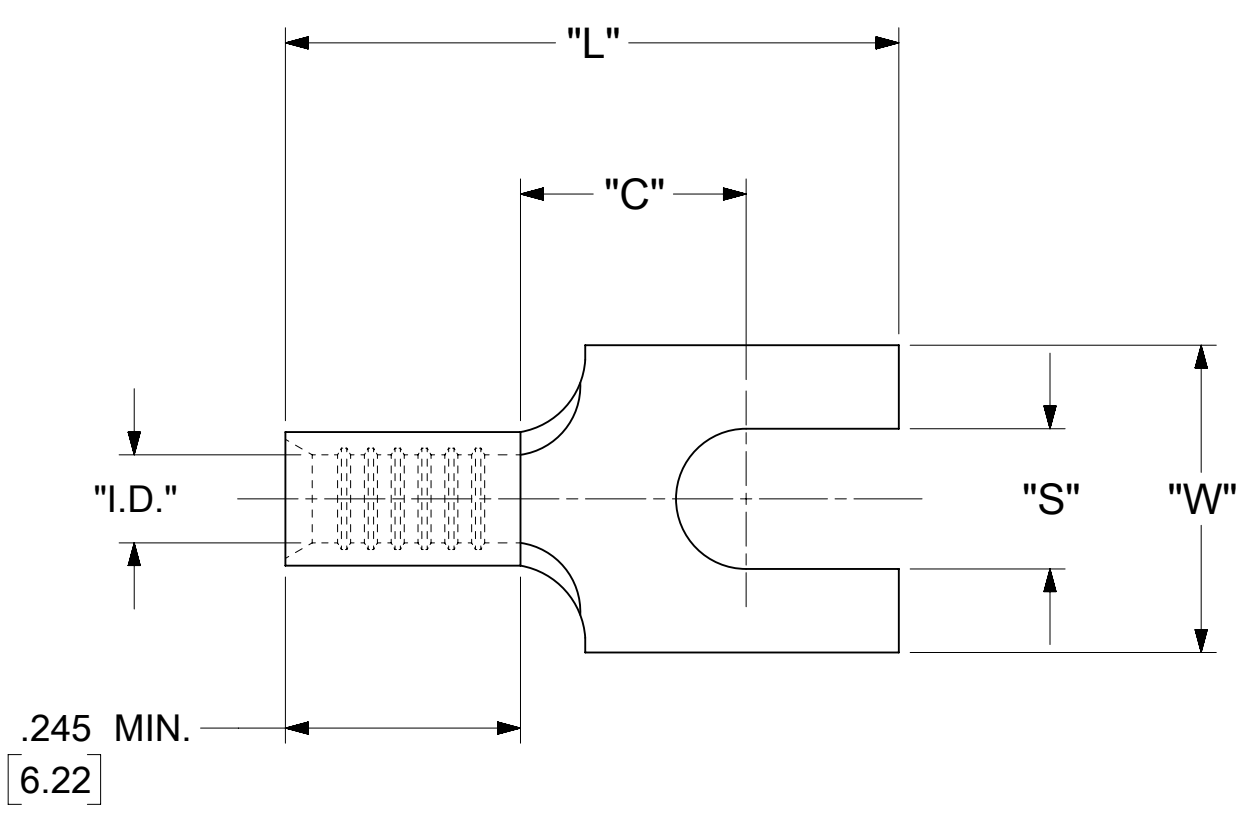


LOOSE PIECE		SPECIFICATIONS						
MATERIAL NUMBER	ENGINEERING NUMBER	STUD SIZE	"S" ±.005 [0.13]	"W" ±.010 [0.25]	"C" MIN.	"L" MAX.	"I.D." MIN.	STOCK THICKNESS
191400030	A-134-04	4	.119 [3.02]	.291 [7.39]	.207 [5.26]	.639 [16.23]	.062 [1.57]	.028 ^{+0.001} / _{-0.000} [0.71]
191400031	A-134-06	6	.146 [3.71]					
191400033	A-134-08	8	.173 [4.39]					
191400034	A-134-10	10	.198 [5.03]					
191400038	A-138-04	4	.119 [3.02]	.245 [6.23]	.207 [5.26]	.639 [16.23]	.062 [1.57]	.028 ^{+0.001} / _{-0.000} [0.71]
191400040	A-138-06	6	.146 [3.71]					



- NOTES:
- MATERIAL: COPPER
PLATING: ELECTRO-TIN (.0003 MIN).
 - WIRE SIZE: 22 - 18 AWG
.25 - 1.5 MM²
 - "UL" LISTING #E32244
"CSA" LISTING #18689
 - ALL DIMENSIONS IN INCHES/[MM].
 - PARTS ARE ROHS COMPLIANT.
 - DIMS. SHOWN ARE FOR REFERENCE ONLY.

THIS DRAWING CONTAINS INFORMATION THAT IS PROPRIETARY TO MOLEX ELECTRONIC TECHNOLOGIES, LLC AND SHOULD NOT BE USED WITHOUT WRITTEN PERMISSION										
SYMBOLS	DIMENSION UNITS		SCALE		CURRENT REV DESC:					
	INCH/MM	NTS								
▽ = 0	GENERAL TOLERANCES (UNLESS SPECIFIED)				EC NO: 625848 DRWN: ABENJAMINLW 2019/09/06 CHK'D: GROJAS01 2019/10/17 APPR: JMACNEIL 2019/10/18					
▽ = 0		MM	INCH							
▽ = 0	4 PLACES	±	---	±	---	INITIAL REVISION: DRWN: JJ 1984/10/15 APPR:				
▽ = 0	3 PLACES	±	---	±	0.005					
▽ = 0	2 PLACES	±	0.13	±	0.01	DOCUMENT NUMBER: ACD10301 DOC TYPE: PSD DOC PART: 001 REVISION: A				
▽ = 0	1 PLACE	±	0.25	±	---					
☒ = 0	0 PLACES	±	---	±	---	MATERIAL NUMBER: SEE TABLE CUSTOMER: GENERAL MARKET SHEET NUMBER: 1 OF 1				
■ = 0	ANGULAR TOL		± 0.5°		THIRD ANGLE PROJECTION					DRAWING: C-SIZE
▽ = 0	DRAFT WHERE APPLICABLE MUST REMAIN WITHIN DIMENSIONS									

DOCUMENT STATUS	P1	RELEASE DATE	2019/10/18 22:51:24
-----------------	----	--------------	---------------------