

Specification Sheet

Part Number: 181-22031

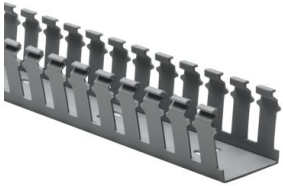
Strong fingers prevent unintended breaking.

Fingers are easily deflected outward, allowing easier positioning of the wires.

Restricted opening prevents unintended removal of wires and permits any individual wire to be traced without disconnection.

Nonpermanent adhesive allows repositioning prior to final installation.

Optional covers snap on and off easily, and their nonslip lining ensures they stay in place even under vibration.



Slotted Wall Wiring Duct, 2" x 2", Adhesive, PVC, Gray, 30ft/Box

Article Number 181-22031

Type SLA2X2

Color Gray (GY)

Quantity Per box

Product Description HellermannTyton Slotted Wall Duct features breakaway fingers that provide additional access for wire leads. Each section of the duct is provided with two score lines. The upper score line is used to break away fingers when a wider opening is required. The lower score line allows the sidewall to be smoothly cut for joints and Ts. Pressure-sensitive, rubber-based adhesive backing aids in temporary positioning.

Short Description	Slotted Wall Wiring Duct, 2" x 2", Adhesive, PVC, Gray, 30ft/Box
Global Part Name	SLA2X2-PVC-GY
Technical Description	Adhesive
Length L (Imperial)	6.0
Length L (Metric)	1.83
Width W (Imperial)	2.0
Width W (Metric)	50.8
Height H (Imperial)	2.07
Height H (Metric)	52.6
Mounting Hole Centers (Imperial)	4.0
Material	Polyvinylchloride (PVC)
Material Shortcut	PVC
Flammability	Self-extinguishing
Halogen Free	No

Operating Temperature	+122°F (+50°C)
Reach Compliant (Article 33)	No
ROHS Compliant	Yes
Certification/Specification	EN 50085-2-3_1A EN 50085-1:2005 + A1:2013 CSA UL
UL Recognized (US)	Yes
Package Quantity (Imperial)	30
Package Quantity (Metric)	9.14
Customs Number	3925900000

© 2022 HellermannTyton. All Rights Reserved.

[Contact Us](#)

[RoHS/WEEE Compliance](#)

[Disclaimer](#)

[Terms and Conditions](#)