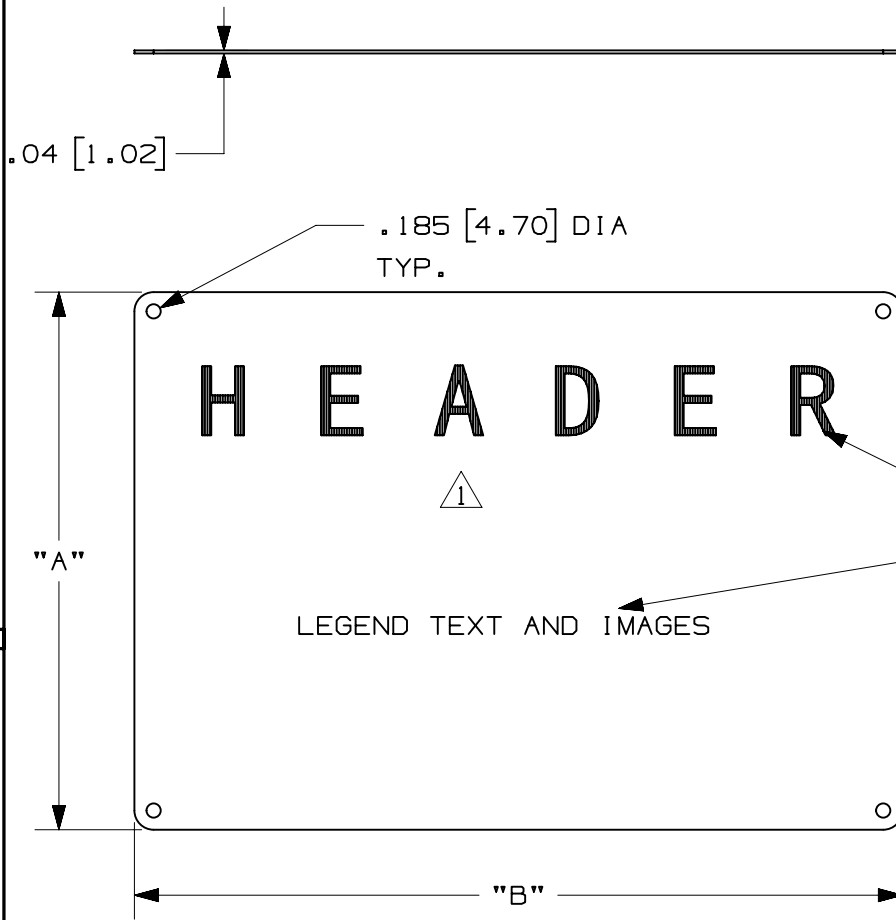


THIS COPY IS PROVIDED ON A RESTRICTED BASIS AND IS NOT TO BE USED IN ANY WAY DETRIMENTAL TO THE INTERESTS OF PANDUIT CORP.



SEE NOTE 3

1

SEE NOTE 4

PAS PART NUMBER	"A" HEIGHT in. [mm]	"B" WIDTH in. [mm]
PAS0710*	7.00 [177.8]	10.00 [254.00]
PAS1007*	10.00 [254.00]	7.00 [177.8]
PAS1014*	10.00 [254.00]	14.00 [335.6]
PAS1410*	14.00 [335.6]	10.00 [254.00]
PAS1420*	14.00 [335.6]	20.00 [508.0]
PAS1824*	18.00 [457.2]	24.00 [609.6]
PAS2014*	20.00 [508.0]	14.00 [335.6]
PAS2418*	24.00 [609.6]	18.00 [457.2]

NOTES:

1. [] INDICATE MILLIMETERS
2. SEE WWW.PANDUIT.COM FOR FULL PART NUMBER AND LEGEND OPTIONS
3. "-A" ADDED TO END OF PART NUMBER FOR ANSI STYLE HEADER
4. LEGEND WILL BE PRINTED SO THAT TEXT IS READ FROM LEFT TO RIGHT ALONG THE "B" DIMENSION
5. "G" AT BEGINNING OF PART NUMBER INDICATES GENERIC SIGN

1

REV	DATE	BY	CHK	APR	DESCRIPTION	ECN
1	5/8/13	JHAC	MJPF	MSAD	ADDED NOTES 3 AND 4, PARTS #'S TO TABLE AND HEADER/LEGEND INFO TO FRONT VIEW	GAECN00857
0	4/8/13	JHAC	MJPF	MSAD	DRAWING RELEASE	GAECN00741

TITLE		ALUMINUM SIGNS		
		CUSTOMER DRAWING		
ITEM REVISION NAME		10E039BA/01		
DATASET FILE NAME		10E039BA_DC_C11050/01B		
UNLESS OTHERWISE SPECIFIED, DIMENSIONAL TOLERANCES ARE: IN [mm]		MATERIAL:		
.x ± .25 [6.35] .xxx ± .05 [1.27]		ALUMINUM 5052		
.xx ± .1 [2.54] ANGLES ± 5 °		DRAWING NUMBER:		
		C11050		
DRAWN BY	DATE	CHK	SCALE	SHT 1 OF 1
JHAC	4/8/13	MSAD	1:2	A

2

1