

Han A Base Angled 1Lever

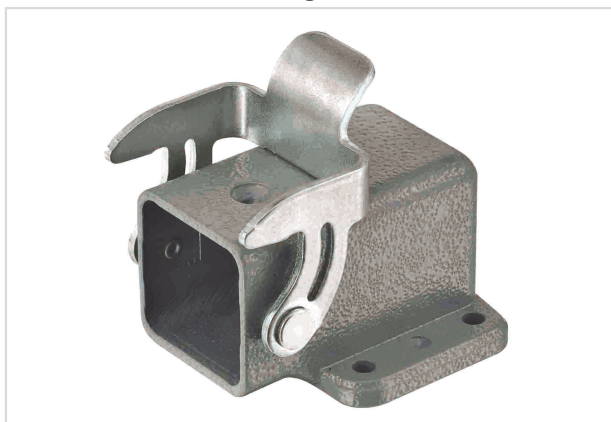


Image is for illustration purposes only. Please refer to product description.

Part number	09 20 003 0810
Specification	Han A Base Angled 1Lever
HARTING eCatalogue	https://b2b.harting.com/09200030810

Identification

Category	Hoods/Housings
Series of hoods/housings	Han A [®]
Type of hood/housing	Bulkhead mounted housing
Description of hood/housing	Angled 4 fixing screws

Version

Size	3 A
Locking type	Single locking lever
Field of application	Standard Hoods/housings for industrial applications

Technical characteristics

Limiting temperature	-40 ... +125 °C
Degree of protection acc. to IEC 60529	IP44 IP65 / IP67 with seal screw 09 20 000 9918
Type rating acc. to UL 50 / UL 50E	12

Material properties

Material (hood/housing)	Zinc die-cast
Surface (hood/housing)	Powder-coated
Colour (hood/housing)	RAL 7037 (dust grey)
Material (seal)	NBR
Material (locking)	Steel
Surface (locking)	Zinc plated



Pushing Performance
 Since 1945

Material properties

RoHS	compliant with exemption
RoHS exemptions	6(a) / 6(a)-I: Lead as an alloying element in steel for machining purposes and in galvanised steel containing up to 0,35 % lead by weight / Lead as an alloying element in steel for machining purposes containing up to 0,35 % lead by weight and in batch hot dip galvanised steel components containing up to 0,2 % lead by weight
ELV status	compliant with exemption
China RoHS	50
REACH Annex XVII substances	Not contained
REACH ANNEX XIV substances	Not contained
REACH SVHC substances	Yes
REACH SVHC substances	Lead
California Proposition 65 substances	Yes
California Proposition 65 substances	Lead
Fire protection on railway vehicles	EN 45545-2 (2020-08)
Requirement set with Hazard Levels	R1 (HL 1-3) R7 (HL 1-3)

Specifications and approvals

Approvals	DNV GL
CE	Yes

Commercial data

Packaging size	10
Net weight	66.98 g
Country of origin	Romania
European customs tariff number	85389099
GTIN	5713140038684
eCl@ss	27440202 Shell for industrial connectors