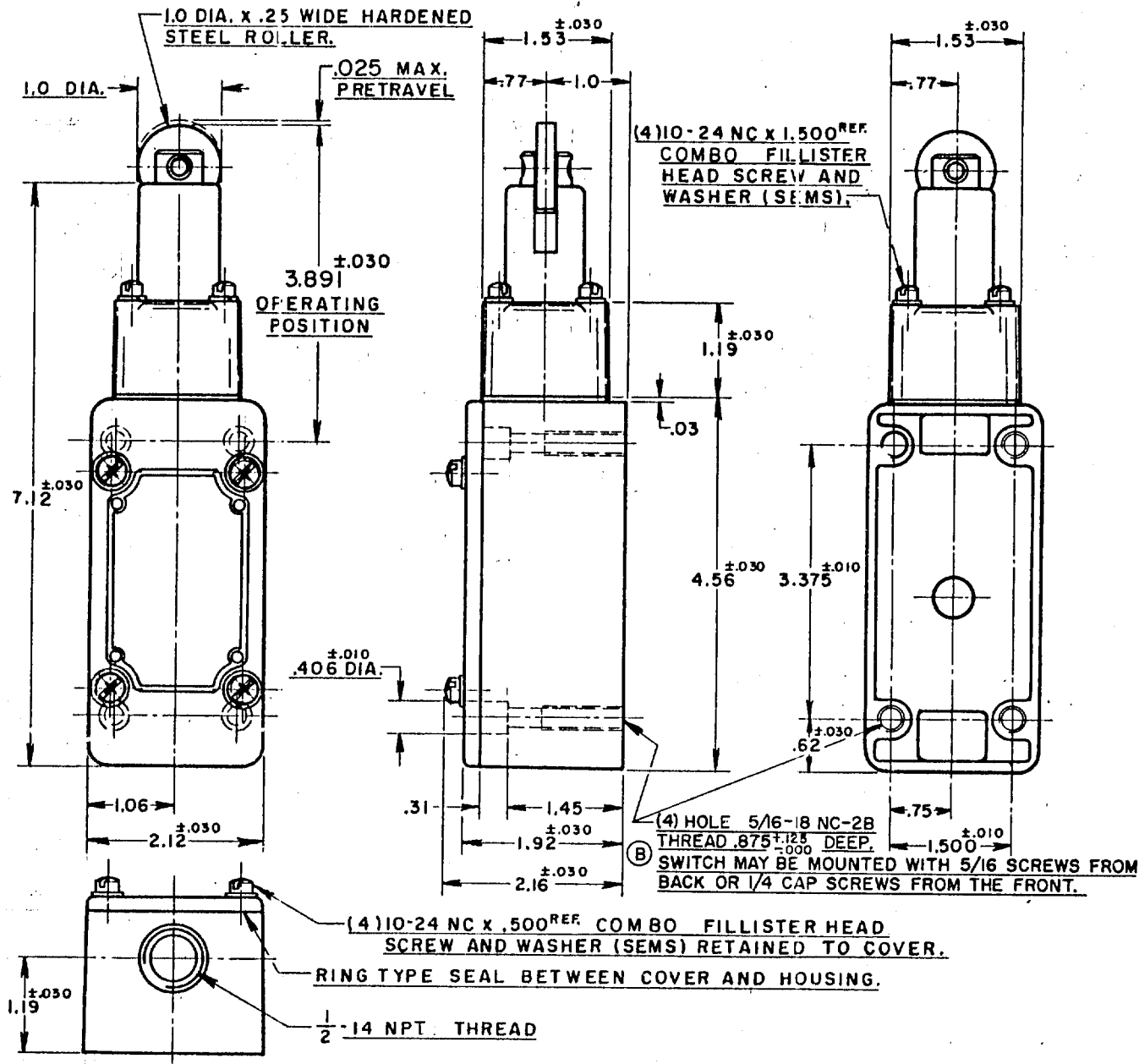


(M) 5ML1 ISSUE 6  
 REPLACES  
 5ML1  
 NUMBER  
 13  
 10  
 8  
 10  
 13  
 19 OCT. 56  
 C.N.T.  
 13 OCT. 56  
 CHECK  
 J.W.M.  
 2789  
 F.  
 AY 58  
 6084  
 S  
 38549  
 R  
 77  
 5051-B  
 A P  
 C 84  
 287  
 R 93  
 G.C.H.  
 24 OCT. 56  
 CHECK  
 56  
 12 OCT. 56  
 R. L. Z.  
 DRAWN



**NOTE -**

- 1-ROLLER ASSEMBLY MAY BE RE-ASSEMBLED 90° FROM POSITION SHOWN.
- 2-IT IS ESSENTIAL TO PREVENT ENTRANCE OF HARMFUL AGENTS THRU THRU THE CONDUIT OPENING TO OBTAIN THE FULL BENEFIT OF THE SEALED CONSTRUCTION PROVIDED IN THIS UNIT
- 3-SWITCH WILL PERFORM SATISFACTORILY IN TEMPERATURES TO MINUS 30° F.

THIS DRAWING COVERS A PROPRIETARY ITEM AND IS THE PROPERTY OF MICRO SWITCH, A DIVISION OF HONEYWELL. THIS DRAWING IS NOT TO BE COPIED OR USED WITHOUT THE APPROVAL OF MICRO SWITCH.

CHARACTERISTICS (TENTATIVE)	ELECTRICAL DATA		SCALE 1/2 TO 1	
OPERATING FORCE --- 6 LBS. APPROX.	CONTACT ARRANGEMENT S. P. D. T.	BREAK CAPACITY	DO NOT SCALE PRINT	
RELEASE FORCE --- 4 LBS. APPROX.	20 A-120, 240, 480 OR 600 VAC; 3/4 HP-120VAC, 1 1/2 H.P.-240 VAC; 1/2 A-115 VDC; 1/4 A-230 VDC PILOT DUTY RATING: 600 VAC MAX.		UNLESS OTHERWISE SPECIFIED	
DIFFERENTIAL TRAVEL --- .005 MAX.			(C) (SP) (UL)	DIMENSIONS ARE IN INCHES
OVERTRAVEL --- .500 MIN.				TOLERANCES ARE:
SWITCH-BASIC REPLACEMENT --- 1MK1			ONE PLACE (.0) ±.030 TWO PLACE (.00) ±.015 THREE PLACE (.000) ±.005 ANGLES ±	
			WEIGHT	