

# MICRO SWITCH

FREEPORT ILLINOIS, U.S.A  
A DIVISION OF HONEYWELL

FED. MFG. CODE 91929

# SWITCH-BASIC

CATALOG LISTING

## IOBS212

X38737-BS  
ISSUE 2

CATALOG LISTING  
**IOBS212**  
PAGE 1 OF 1

**M**

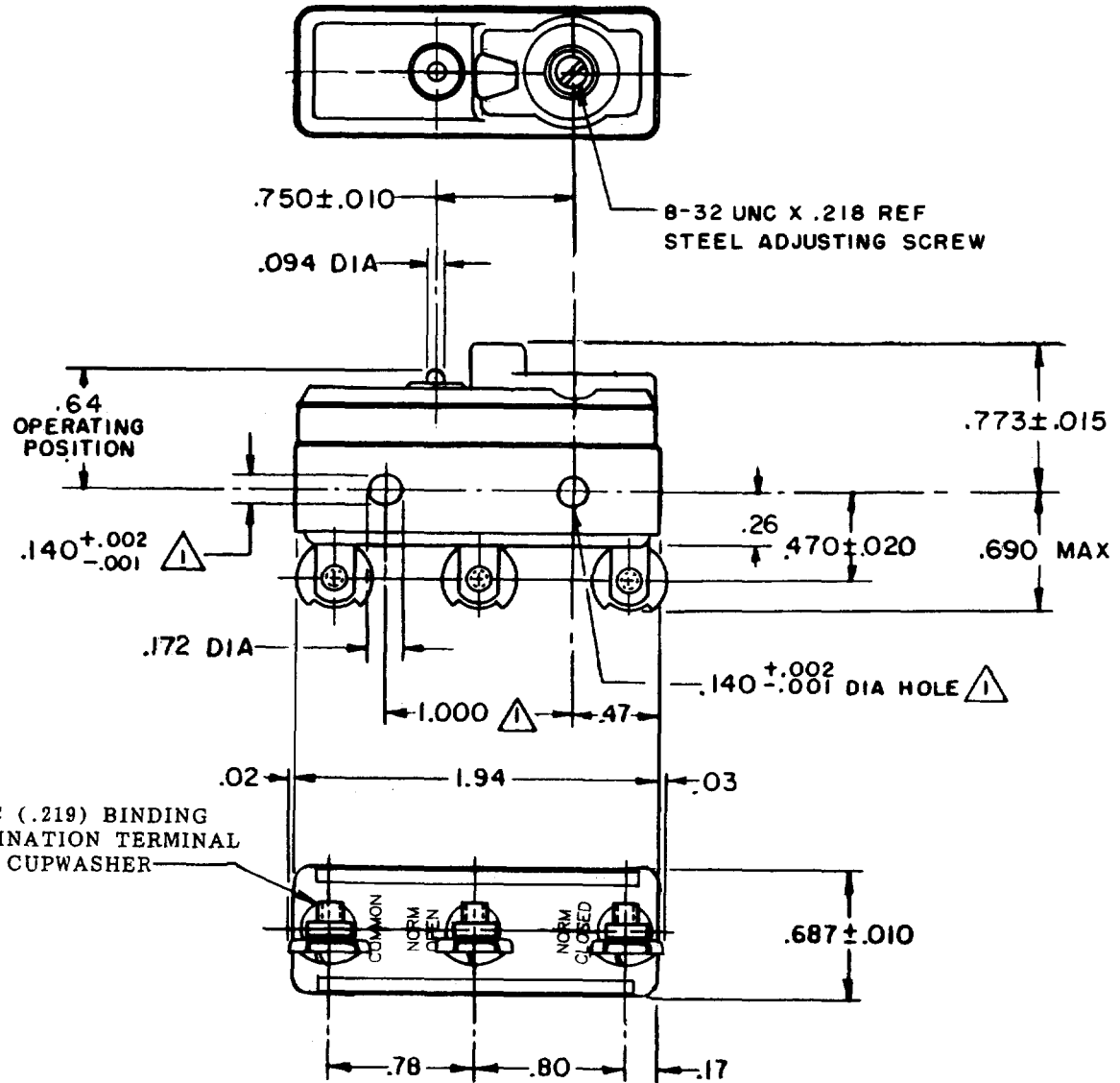
DRAWING NUMBER

ISSUE

9

REPLACES  
PR-125

REVISIONS	CHECK	DATE
A CO37863		21 FEB 67
B R R R		DEC 76
B CO44871		8 NOV 78
C CO45807		23 APR 79
D 54910		29 AUG 84
E CO 58782		25 JAN 86
E CO 73287-G		20 OCT 93
F CO- 75367B		3 MAR 94
G REINST PR-24413		31 JAN 00



3X 8-32 UNC (.219) BINDING HEAD COMBINATION TERMINAL SCREW AND CUPWASHER

**NOTE -**  
 ▲ MOUNTING HOLES WILL ACCEPT PINS OR SCREWS OF .139 MAX DIA ON 1.000 ± .002 CENTERS  
 2 - ADJUSTING SCREW IS AT SAME ELECTRICAL POTENTIAL AS NORMALLY CLOSED TERMINAL

THIS DRAWING COVERS A PROPRIETARY ITEM AND IS THE PROPERTY OF MICRO SWITCH, A DIVISION OF HONEYWELL. THIS DRAWING IS NOT TO BE COPIED OR USED WITHOUT THE APPROVAL OF MICRO SWITCH.

CHARACTERISTICS	ELECTRICAL DATA	SCALE FULL
AT MIN. SETTING OPERATING FORCE --- 32 OZ MAX	CONTACT ARRANGEMENT S P D T	DO NOT SCALE PRINT
RELEASE FORCE --- 10 OZ MIN		UNLESS OTHERWISE NOTED DIMENSIONS ARE IN INCHES
AT MAX. SETTING OVERTRAVEL --- .010 MIN	20A-125, 250 OR 480 VAC 3/4HP-125 VAC; 11/2HP-250 VAC 60/75°C (Cv)	<b>TOLERANCES ARE:</b> ONE PLACE (.0) ±.030 TWO PLACE (.00) ±.015 THREE PLACE (.000) ±.005 ANGLES ±
	UL ®	WEIGHT

FORMTEK  
FO-80378-1A  
DRAWN  
ORD 19 FEB 68  
CHECK  
USD