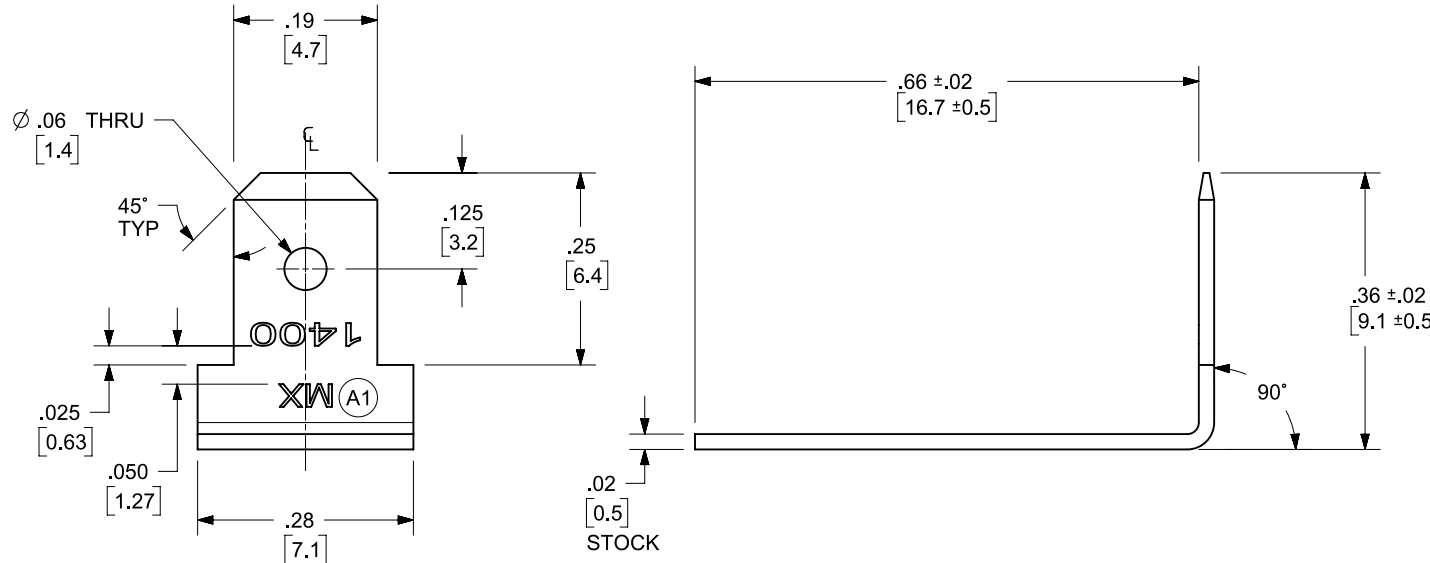
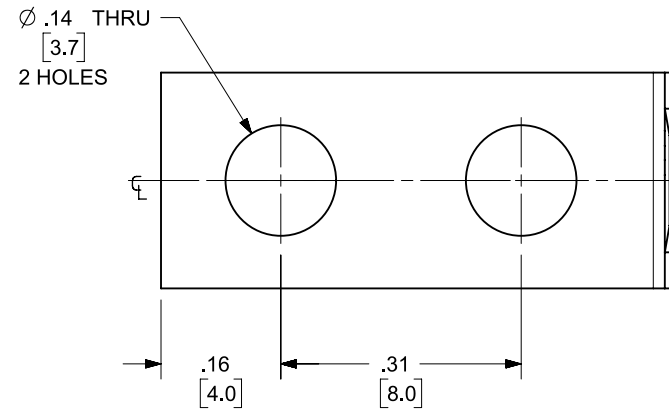


MATERIAL NO.	ENGINEERING NO	DESCRIPTION	MATERIAL	FINISH
380020183	1415	TERMINAL, FAST-TAB VR	BRASS	TIN OVER COPPER PLATED

NOTES:
 1. ALL DIM'S SHOWN ARE BEFORE PLATING.
 2. PART IS RoHS COMPLIANT.



FUNCTIONAL SYMBOLS $\nabla_A = 0$ $\nabla_F = 0$ $\nabla_P = 0$	THIS DRAWING CONTAINS INFORMATION THAT IS PROPRIETARY TO MOLEX ELECTRONIC TECHNOLOGIES, LLC AND SHOULD NOT BE USED WITHOUT WRITTEN PERMISSION		molex TERMINAL, FAST-TAB VR PRODUCT CUSTOMER DRAWING			
	DIMENSION UNITS	SCALE			CURRENT REV DESC: "MX" WAS "BEAU"	
	GENERAL TOLERANCES (UNLESS SPECIFIED)				EC NO: 650468	
					DRWN: RMV02 2020/11/13	
DIVISIONAL SYMBOLS $\nabla_A = 0$ $\nabla_F = 0$ $\nabla_P = 0$	MM	INCH	CHK'D: DMYRICK 2020/12/04			
	4 PLACES ±	±	APPR: EJOHNSON04 2020/12/18			
	3 PLACES ±	± 0.005	INITIAL REVISION:			
	2 PLACES ±	± 0.01	DRWN: DRWN BY XXXX/XX/XX			
	1 PLACE ±	±	APPR: APPR BY XXXX/XX/XX			
ANGULAR TOL ± 2.0 °		THIRD ANGLE PROJECTION		DOCUMENT NUMBER		
DRAFT WHERE APPLICABLE MUST REMAIN WITHIN DIMENSIONS		DRAWING		SD-38002-0183		
		SERIES		DOC TYPE		
		A-SIZE		PSD		
		38002		DOC PART		
		SEE TABLE		001		
		GENERAL MARKET		REVISION		
		1 OF 1		A1		

DOCUMENT STATUS	P1	RELEASE DATE	2020/12/18	14:47:47
-----------------	----	--------------	------------	----------