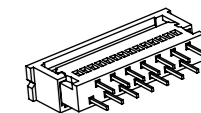
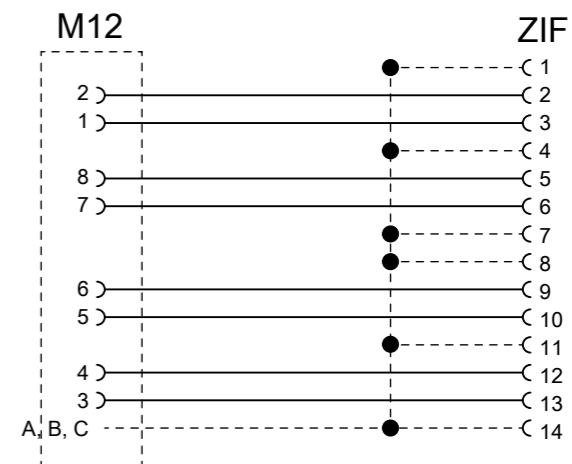


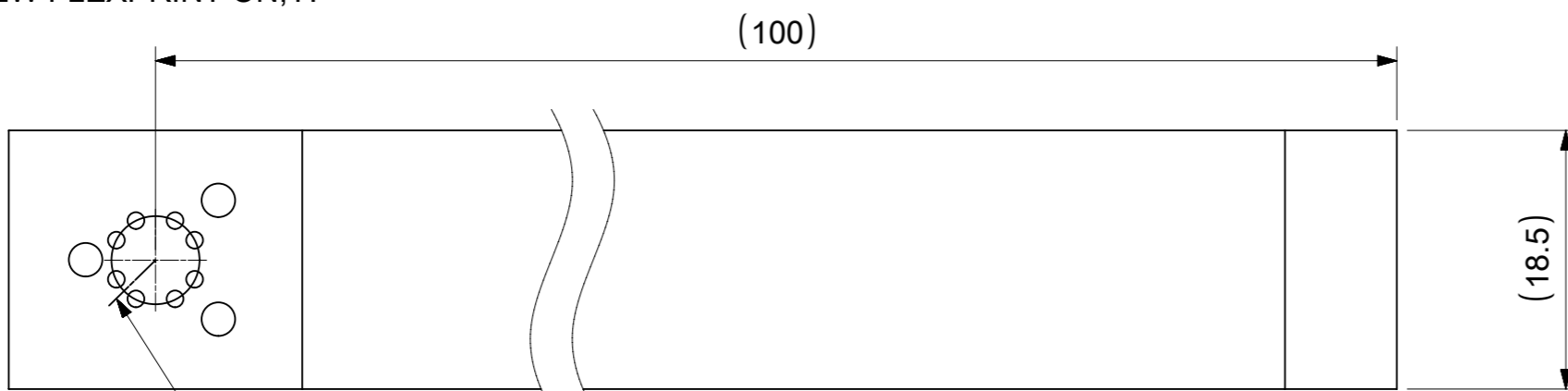
SCALE 1:1



**WIRING DIAGRAM**



VIEW FLEXPRIINT ON;Y:



FRONT VIEW - PLACEMENT SIDE

CODING

**NOTES:**

**ELECTRICAL PROPERTIES:**

- RATED VOLTAGE: 48V
- CURRENT: 0.5A PER PIN
- IMPEDANCE 100 Ohm
- TRANSMISSION CHARACTERISTIC: CAT6A

**MECHANICAL PROPERTIES:**

- FLEXPRIINT: PCB
- ZIFCONNECTOR SEE: MOLEX PN 3953 2145
- 14 POL 1.25 PITCH.

BOM				
PIN	QTY	DESCRIPTION	MATERIAL	FINISH
3	1	FLEX CONNECTOR 14 POL 1.2 PITCH	-	-
2	1	FLEX FR4 1L SHLD 20X115	PCB	-
1	1	M12 CAT6A REC ASSY BACK MOUNT	-	-

DOCUMENT STATUS	P1	RELEASE DATE	2020/07/06	11:59:04
-----------------	----	--------------	------------	----------

SYMBOLS		THIS DRAWING CONTAINS INFORMATION THAT IS PROPRIETARY TO MOLEX ELECTRONIC TECHNOLOGIES, LLC AND SHOULD NOT BE USED WITHOUT WRITTEN PERMISSION	
▽ = 0	mm	SCALE	2:1
▽ = 0	GENERAL TOLERANCES (UNLESS SPECIFIED)		
▽ = 0	ANGULAR TOL	±	°
▽ = 0	4 PLACES	±	
▽ = 0	3 PLACES	±	
▽ = 0	2 PLACES	±	0.05
▽ = 0	1 PLACE	±	0.1
▽ = 0	0 PLACES	±	
■ = 0	DRAFT WHERE APPLICABLE MUST REMAIN WITHIN DIMENSIONS		
▽ = 0	THIRD ANGLE PROJECTION		
CURRENT REV DESC:		EC NO: 640862	
		DRWN: SSM 2020/06/22	
		CHK'D: RSILLER 2020/07/06	
		APPR: RSILLER 2020/07/06	
INITIAL REVISION:		DRWN: SSM 2020/06/22	
		APPR: RSILLER 2020/07/06	
DOCUMENT NUMBER		1203410260	
DOC TYPE		PSD	
DOC PART		000	
REVISION		A	
MATERIAL NUMBER		120341	
CUSTOMER		GENERAL MARKET	
SHEET NUMBER		1 OF 1	