

MICRO SWITCH

FREEPORT ILLINOIS, U.S.A
A DIVISION OF HONEYWELL
FED. MFG. CODE 91929

SWITCH-BASIC

CATALOG LISTING

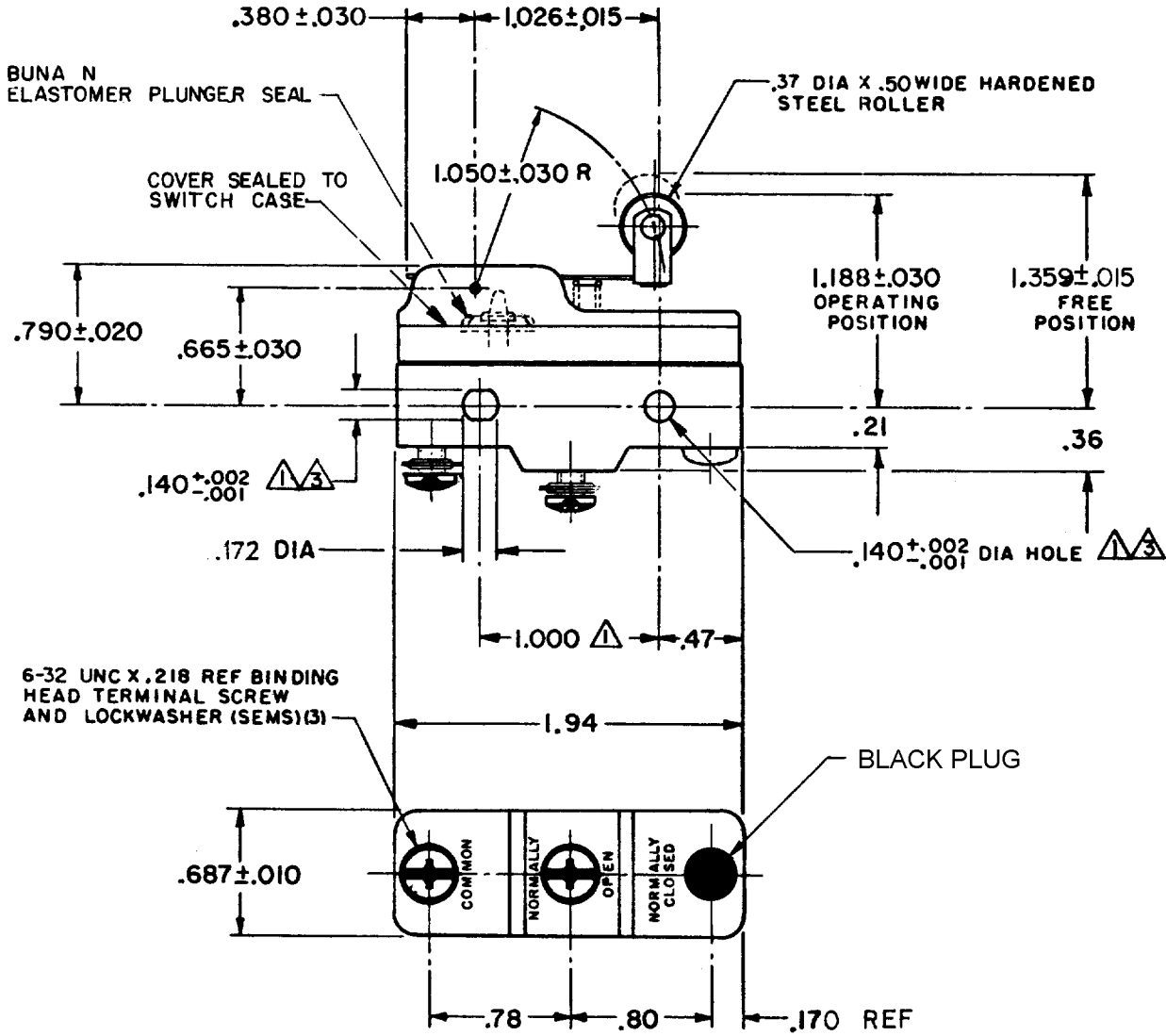
YZ-7RW8221555516T

CATALOG LISTING
YZ-7RW8221555516T
PAGE 1 OF 1
RELEASE NO. PR-10650-T REPLACES X71643-YZ

M
DRAWING NUMBER
6
ISSUE

REVISIONS

A	C067209	J A P	2 MAY 90
B	CO-69351-D	JWB	18 JUL 91
C	CO-77588	K D R	29 MAR 94
D	C093346	DLT	17 AUG 98
E	0000763	CSL	2 JUL 03



- NOTES
- 1 MOUNTING HOLES WILL ACCEPT PINS OR SCREWS OF .139 MAX DIA ON 1.000±.002 CENTERS
 - 2 SEALED CONSTRUCTION PROVIDES SPLASH RESISTANCE
 - 3 SLIGHT COUNTERBORE PERMISSIBLE (EITHER SIDE)

THIS DRAWING COVERS A PROPRIETARY ITEM AND IS THE PROPERTY OF MICRO SWITCH, A DIVISION OF HONEYWELL. THIS DRAWING IS NOT TO BE COPIED OR USED WITHOUT THE APPROVAL OF MICRO SWITCH.

THIRD ANGLE PROJECTION

CHARACTERISTICS OPERATING FORCE ----- 7 OZ MAX RELEASE FORCE ----- 1 1/2 MIN DIFFERENTIAL TRAVEL ----- .020-.050 OVERTRAVEL ----- .094 MIN	ELECTRICAL DATA CONTACT ARRANGEMENT S P N O L9 10A 125, 250 OR 480 VAC 1/2 A 125 VDC, 1/4 A 250 VDC L288	SCALE FULL DO NOT SCALE PRINT TOLERANCES APPLY TO DESIGN UNITS. CONVERSIONS ARE ONLY FOR REFERENCE. UNLESS NOTED, TOLERANCES ARE Z
	DIM. TOL. DIM. TOL. mm mm/in in in NO PLACES X 17.04 X X 0.81-80 ONE PLACE X.X 0.47,016 X.XX 0.30/.015 TWO PLACES X.XX 0.18/.008 X.XXX 0.12/.006 THREE PLACES X.XXX ANGLES SI METRIC DESIGN UNITS <input type="checkbox"/> <input checked="" type="checkbox"/> US CUSTOMARY	WEIGHT .079 LB
	FU <input checked="" type="checkbox"/> SP <input checked="" type="checkbox"/> CE <input checked="" type="checkbox"/>	

FO-52848-A
DRAWN
EF 19 OCT 81 CHECK
C EB 26 OCT 81 CHECK