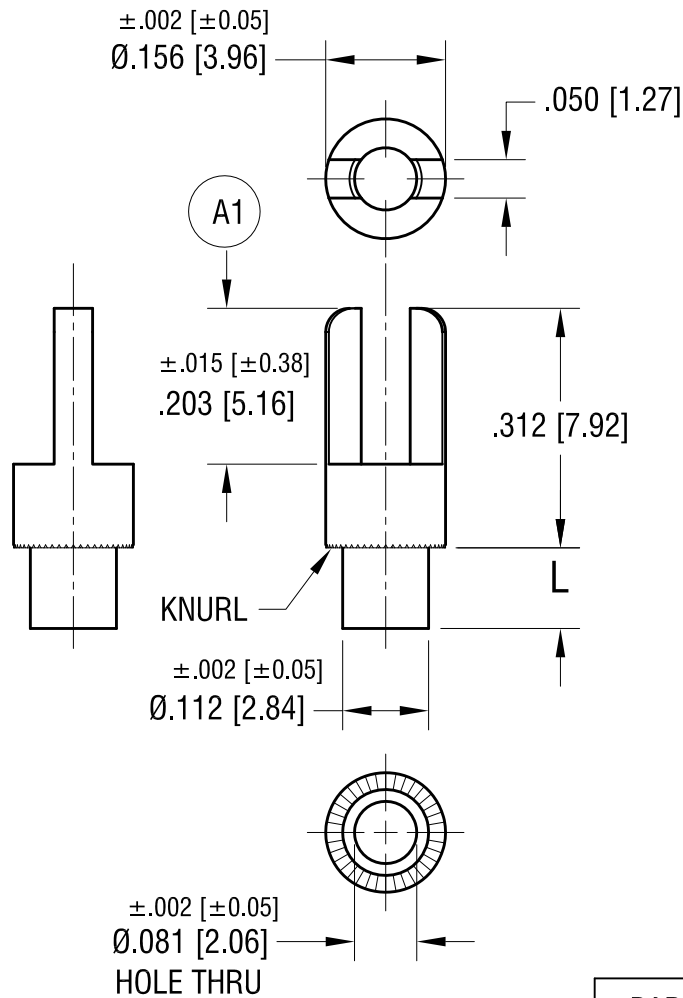


THIS DOCUMENT IS THE PROPERTY OF
KEYSTONE ELECTRONICS CORP. AND
SHALL NOT BE REPRODUCED, DISTRIBUTED
OR USED AS A BASIS FOR MANUFACTURE
WITHOUT PRIOR WRITTEN PERMISSION
FROM KEYSTONE ELECTRONICS CORP.

ACTUAL SIZE



PART NO.	'L' DIM.
1510-1	.075 [1.91]
1510-2	.105 [2.67]
1510-3	.135 [3.43]
1510-4	.165 [4.19]

KEYSTONE ELECTRONICS CORP.

www.keyelco.com • NEW HYDE PARK, NY 11040 • Tel (516) 328-7500

PART NAME		TERMINAL	
MATERIAL		BRASS	
FINISH	TIN PLATE	DRN BY	BOONE
		APP'D	RH
		DATE	6.10.02
		SCALE	4X
TOLERANCES	INCH [MM]	CODE	DWG NO.
DECIMAL	$\pm .005$ [± 0.13]	C	1510-
ANGULAR	$\pm 1^\circ$		
UNLESS OTHERWISE SPECIFIED			

(A1) WAS $.203 \pm .005$

7.14.21 CHANGE AS PER ECN 21-068 A

DATE	DESCRIPTION	REV.
7.14.21	CHANGE AS PER ECN 21-068	A