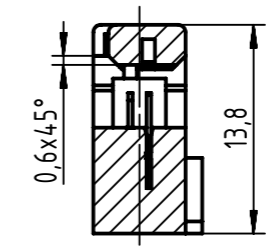


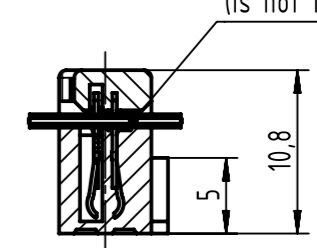
pre-assembled

A-A



assembled

B-B



flat cable
AWG 26/7 - 28/7
(is not in scope of delivery)

coding style table


	style A: for connectors 6-pole
	style B: for connectors from 10 to 14-pole
	style C: for connectors from 16 to 64-pole

full range of P/N's and
dimensions shown on page 2/2

further information see product data sheet

	All Dimensions in mm Original Size DIN A3	Scale 2:1	Free size tol. IEC 60603-13	Ref. Sub.
	All rights reserved Department EL PD	Created by TADJE	Inspected by STORCK	Standardisation HOFFMANN
HARTING Electronics GmbH D-32339 Espelkamp	Title SEK 18 female connector with open end cover	Date 2020-05-05	State Final Release	Doc-Key / ECM-Nr. 100662934/UGD/001/C 500000172195
	Type TB	Number 09185XXX803	Rev. C	Page 1/2

1	2		3	4	5		6	7	8												
A	performance level										A										
	no. of contacts	PL3	PL2	S4 (NM30)	insulator colour	remark	quantity	dimensions				B									
	part number	part number	part number	A max.	B	C	D	C													
part number	part number	part number	part number	part number	part number	part number	part number		part number	part number	D										
B	06	09 18 506 7803	09 18 506 6803	09 18 506 5803	grey	-			12,2	2 x 2,54 (=5,08)		2	7,62	B							
	10	09 18 510 7803	09 18 510 6803	09 18 510 5803			17,3	4 x 2,54 (=10,16)	3,8	12,7		C									
	14	09 18 514 7803	09 18 514 6803	09 18 514 5803			22,4	6 x 2,54 (=15,24)	3,8	17,78	C										
	16	09 18 516 7803	09 18 516 6803	09 18 516 5803			24,9	7 x 2,54 (=17,78)	3,8	20,32			C								
	20	09 18 520 7803	09 18 520 6803	09 18 520 5803			30	9 x 2,54 (=22,86)	3,8	25,4					C						
	26	09 18 526 7803	09 18 526 6803	09 18 526 5803			37,6	12 x 2,54 (=30,48)	3,8	33,02						C					
	30	09 18 530 7803	09 18 530 6803	09 18 530 5803			42,7	14 x 2,54 (=35,56)	3,8	38,50							C				
	34	09 18 534 7803	09 18 534 6803	09 18 534 5803			47,8	16 x 2,54 (=40,64)	3,8	43,18								C			
	40	09 18 540 7803	09 18 540 6803	09 18 540 5803			55,4	19 x 2,54 (=48,26)	3,8	50,8									C		
	50	09 18 550 7803	09 18 550 6803	09 18 550 5803			68,1	24 x 2,54 (=60,96)	3,8	63,5										C	
	60	09 18 560 7803	09 18 560 6803	09 18 560 5803			80,8	29 x 2,54 (=73,66)	3,8	76,6											C
	64	09 18 564 7803	09 18 564 6803	09 18 564 5803			85,9	31 x 2,54 (=78,74)	3,8	81,28											
06	09 18 506 7803 001	09 18 506 6803 001	09 18 506 5803 001	black	-		12,2	2 x 2,54 (=5,08)	2	7,62				D							
10	09 18 510 7803 001	09 18 510 6803 001	09 18 510 5803 001			17,3	4 x 2,54 (=10,16)	3,8	12,7	D											
14	09 18 514 7803 001	09 18 514 6803 001	09 18 514 5803 001			22,4	6 x 2,54 (=15,24)	3,8	17,78		D										
16	09 18 516 7803 001	09 18 516 6803 001	09 18 516 5803 001			24,9	7 x 2,54 (=17,78)	3,8	20,32			D									
20	09 18 520 7803 001	09 18 520 6803 001	09 18 520 5803 001			30	9 x 2,54 (=22,86)	3,8	25,4				D								
26	09 18 526 7803 001	09 18 526 6803 001	09 18 526 5803 001			37,6	12 x 2,54 (=30,48)	3,8	33,02						D						
30	09 18 530 7803 001	09 18 530 6803 001	09 18 530 5803 001			42,7	14 x 2,54 (=35,56)	3,8	38,50							D					
34	09 18 534 7803 001	09 18 534 6803 001	09 18 534 5803 001			47,8	16 x 2,54 (=40,64)	3,8	43,18								D				
40	09 18 540 7803 001	09 18 540 6803 001	09 18 540 5803 001			55,4	19 x 2,54 (=48,26)	3,8	50,8									D			
50	09 18 550 7803 001	09 18 550 6803 001	09 18 550 5803 001			68,1	24 x 2,54 (=60,96)	3,8	63,5										D		
60	09 18 560 7803 001	09 18 560 6803 001	09 18 560 5803 001			80,8	29 x 2,54 (=73,66)	3,8	76,6											D	
64	09 18 564 7803 001	09 18 564 6803 001	09 18 564 5803 001			85,9	31 x 2,54 (=78,74)	3,8	81,28												D
06	09 18 506 7803 58U	09 18 506 6803 58U	09 18 506 5803 58U	grey	bulk packaging	5000 pieces	12,2	2 x 2,54 (=5,08)	2					7,62							
10	09 18 510 7803 58U	09 18 510 6803 58U	09 18 510 5803 58U			5000 pieces	17,3	4 x 2,54 (=10,16)	3,8	12,7				E							
14	09 18 514 7803 58U	09 18 514 6803 58U	09 18 514 5803 58U			5000 pieces	22,4	6 x 2,54 (=15,24)	3,8	17,78	E										
16	09 18 516 7803 58U	09 18 516 6803 58U	09 18 516 5803 58U			5000 pieces	24,9	7 x 2,54 (=17,78)	3,8	20,32		E									
20	09 18 520 7803 58U	09 18 520 6803 58U	09 18 520 5803 58U			5000 pieces	30	9 x 2,54 (=22,86)	3,8	25,4			E								
26	09 18 526 7803 58U	09 18 526 6803 58U	09 18 526 5803 58U			5000 pieces	37,6	12 x 2,54 (=30,48)	3,8	33,02					E						
30	09 18 530 7803 58U	09 18 530 6803 58U	09 18 530 5803 58U			5000 pieces	42,7	14 x 2,54 (=35,56)	3,8	38,50						E					
34	09 18 534 7803 58U	09 18 534 6803 58U	09 18 534 5803 58U			3000 pieces	47,8	16 x 2,54 (=40,64)	3,8	43,18							E				
40	09 18 540 7803 58U	09 18 540 6803 58U	09 18 540 5803 58U			3000 pieces	55,4	19 x 2,54 (=48,26)	3,8	50,8								E			
06	09 18 506 7803 001	09 18 506 6803 001	09 18 506 5803 001			grey	-		12,2	2 x 2,54 (=5,08)									2		
10	09 18 510 7803 001	09 18 510 6803 001	09 18 510 5803 001	17,3	4 x 2,54 (=10,16)			3,8	12,7	F											
14	09 18 514 7803 001	09 18 514 6803 001	09 18 514 5803 001	22,4	6 x 2,54 (=15,24)			3,8	17,78					F							
16	09 18 516 7803 001	09 18 516 6803 001	09 18 516 5803 001	24,9	7 x 2,54 (=17,78)			3,8	20,32		F										
20	09 18 520 7803 001	09 18 520 6803 001	09 18 520 5803 001	30	9 x 2,54 (=22,86)			3,8	25,4			F									
26	09 18 526 7803 001	09 18 526 6803 001	09 18 526 5803 001	37,6	12 x 2,54 (=30,48)			3,8	33,02				F								
30	09 18 530 7803 001	09 18 530 6803 001	09 18 530 5803 001	42,7	14 x 2,54 (=35,56)			3,8	38,50						F						
34	09 18 534 7803 001	09 18 534 6803 001	09 18 534 5803 001	47,8	16 x 2,54 (=40,64)			3,8	43,18							F					
40	09 18 540 7803 001	09 18 540 6803 001	09 18 540 5803 001	55,4	19 x 2,54 (=48,26)			3,8	50,8								F				
50	09 18 550 7803 001	09 18 550 6803 001	09 18 550 5803 001	68,1	24 x 2,54 (=60,96)			3,8	63,5									F			
60	09 18 560 7803 001	09 18 560 6803 001	09 18 560 5803 001	80,8	29 x 2,54 (=73,66)	3,8	76,6	F													
64	09 18 564 7803 001	09 18 564 6803 001	09 18 564 5803 001	85,9	31 x 2,54 (=78,74)	3,8	81,28		F												

	All Dimensions in mm Original Size DIN A3		Scale 1:1	Free size tol.		Ref.	
	All rights reserved Department EL PD		Created by TADJE	Inspected by STORCK	Standardisation HOFFMANN	Date 2020-05-05	State Final Release
HARTING Electronics GmbH D-32339 Espelkamp		Title SEK 18 female connector with open end cover				Doc-Key / ECM-Nr. 100662934/UGD/001/C 500000172195	
		Type TB	Number 09185XXX803		Rev. C	Page 2/2	