



MICRO SWITCH

FREEPORT, ILLINOIS, U.S.A.
A DIVISION OF HONEYWELL

FED. MFG. CODE 91929

SWITCH-BASIC

CATALOG LISTING

YZ-2RW812-A2

AYF2000

YZ-2RW812-A2
PAGE 1 OF 1

M
DRAWING NUMBER

ISSUE
11

REPLACES

RELEASE NO.

CHECK

09JAN06

RJ

CHECK

03

RAW

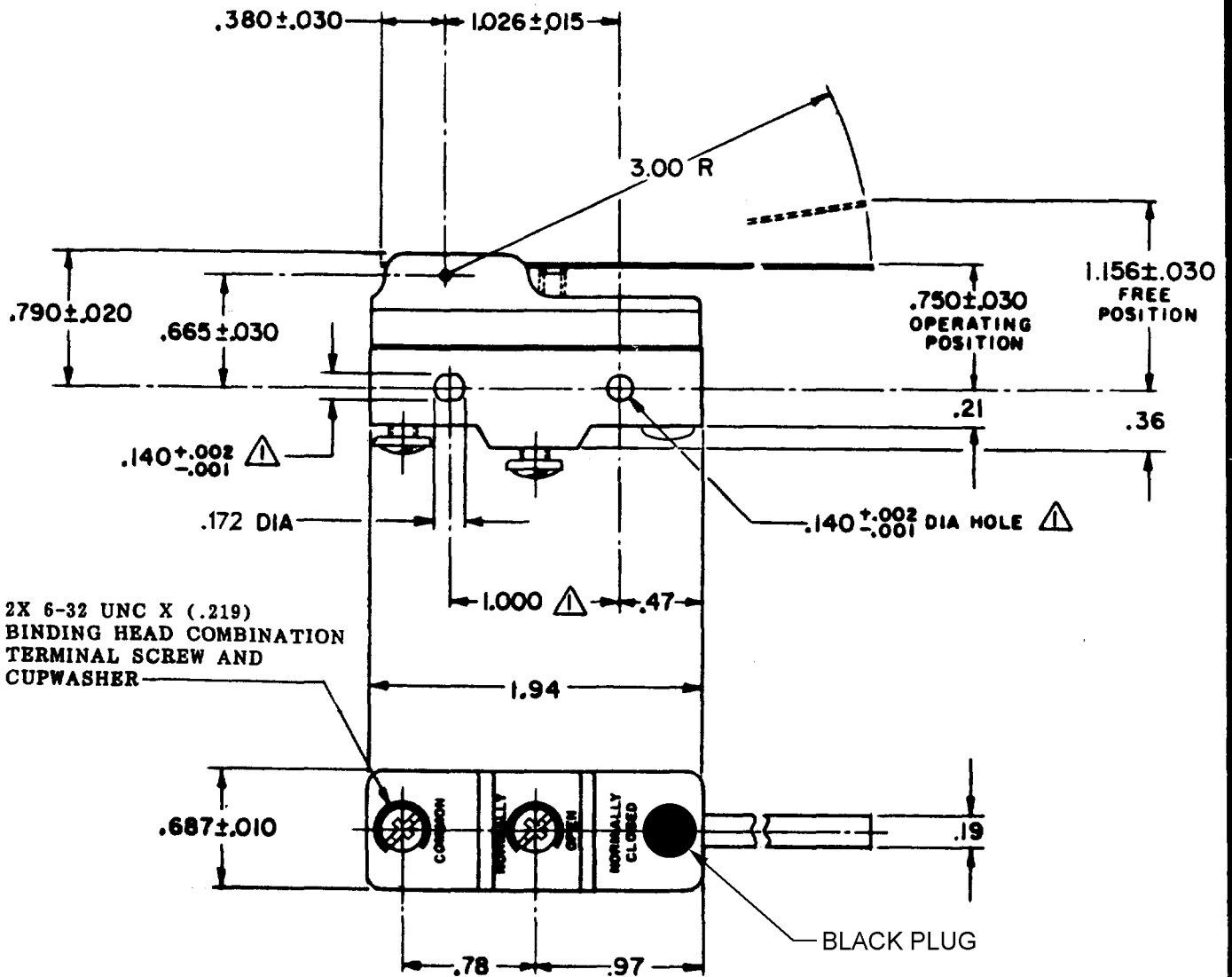
CHECK

63

RAW

LEB

REVISIONS	
A	CO17262
LEB	OCT 83
B	73287-J
JAL	22 NOV 93
C	77588
KDR	29 MAR 94
D	CO93346
DLT	22 SEP 98
E	0000677
JLH	25 JUL 03
F	0017586
TSG	09 JAN 06



NOTE
 ▲ MOUNTING HOLES WILL ACCEPT PINS OR SCREWS OF .139 MAX DIA ON 1.000 ±.002 CENTERS

THIS DRAWING COVERS A PROPRIETARY ITEM AND IS THE PROPERTY OF MICRO SWITCH, A DIVISION OF MINNEAPOLIS-HONEYWELL REGULATOR CO. THIS DRAWING IS NOT TO BE COPIED OR USED WITHOUT THE APPROVAL OF MICRO SWITCH.

CHARACTERISTICS	ELECTRICAL DATA	SCALE FULL
OPERATING FORCE-----3/4 - 2 1/4 OZ	CONTACT ARRANGEMENT S P N O	DO NOT SCALE PRINT
RELEASE FORCE-----1/4 OZ MIN	-L95- 1/2 A-125, 250, OR 400 VAC 1/2 A-125 VDC, 1/4 A-250 VDC 1/8 HP-125 VAC; 1/4 HP-250 VAC	UNLESS OTHERWISE NOTED DIMENSIONS ARE IN INCHES
DIFFERENTIAL TRAVEL-----.009-.060	-L288- -L306- -L315-	TOLERANCES ARE: ONE PLACE (.0) ±.030 TWO PLACE (.00) ±.015 THREE PLACE (.000) ±.005 ANGLES ±
OVERTRAVEL-----.266 MIN	CE 05 RU SA 16A 250V ~ T85 5E4	WEIGHT .073 LB

RASTER

DRAWN